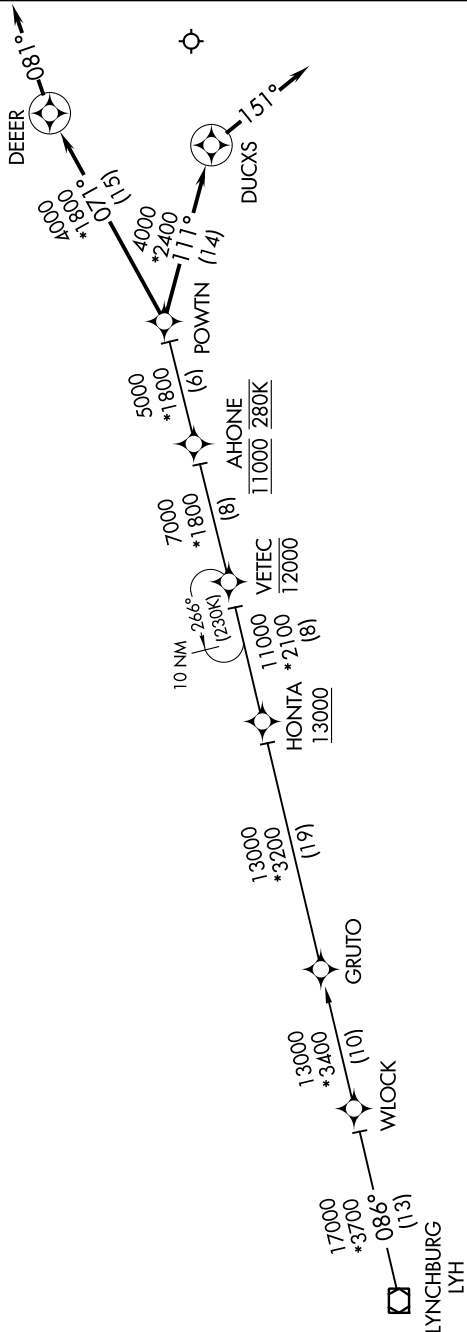


# POWTN FOUR ARRIVAL (RNAV)

NE-3, 26 MAR 2020 to 23 APR 2020

ATIS  
119.15 263.025  
POTOMAC APP CON  
126.75 307.2



## ARRIVAL ROUTE DESCRIPTION

### LYNCHBURG TRANSITION (LYH.POWTN4)

LANDING NORTH RUNWAYS 2, 7, 34: From POWTN on track 111° to DUCXS, then on heading 151° or as assigned by ATC. Expect RADAR vectors to final approach course.

LANDING SOUTH RUNWAYS 16, 20, 25: From POWTN on track 071° to DEER, then on heading 081° or as assigned by ATC. Expect RADAR vectors to final approach course.



NOTE: RADAR required.

NOTE: RNAV 1.

NOTE: DME/DME/IRU or GPS required.

NOTE: Turbojet aircraft only.

NOTE: Maintain last ATC assigned altitude until cleared to "descend via the POWTN STAR".  
ARTCC will issue landing direction assignment (north or south) and Potomac TRACON will issue runway assignments.

NOTE: Chart not to scale.

# POWTN FOUR ARRIVAL (RNAV)

NE-3, 26 MAR 2020 to 23 APR 2020