

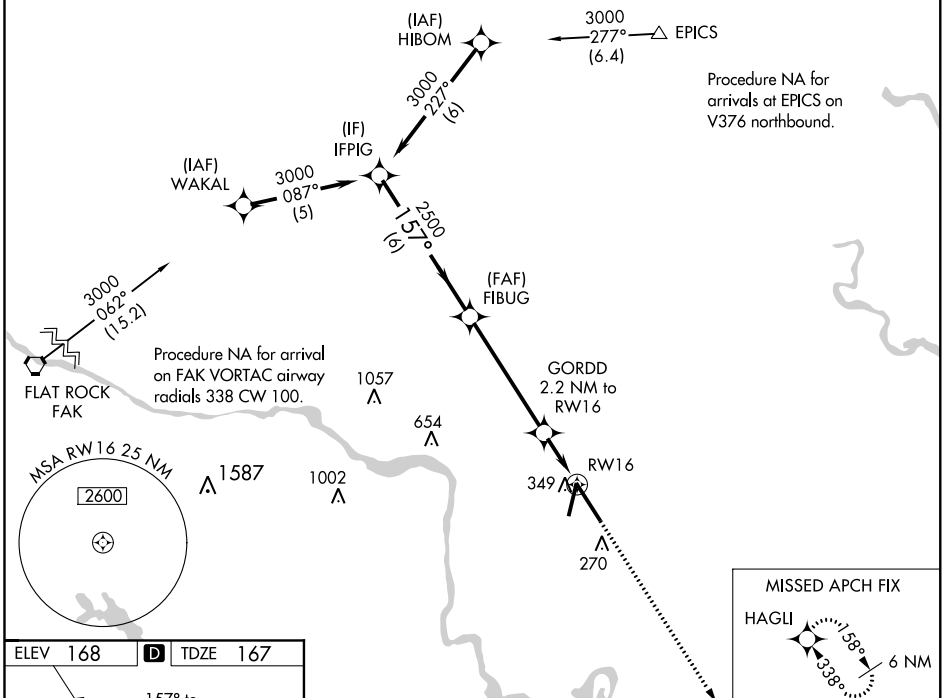
WAAS CH <b>72720</b> <b>W16A</b>	APP CRS <b>157°</b>	Rwy Idg TDZE <b>167</b> Apt Elev <b>168</b>	<b>9003</b>
--	------------------------	---	-------------

# RNAV (GPS) Z RWY 16

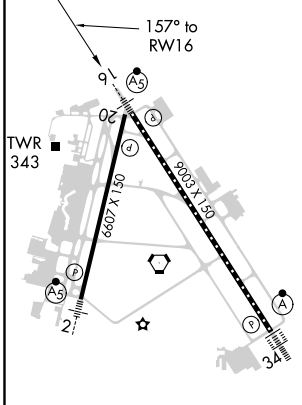
RICHMOND INTL (RIC)

RNP APCH: ▼ For uncompensated Baro-VNAV systems, LNAV/VNAV NA below -11°C (13°F) or above 54°C (130°F). For inop ALS increase LNAV/VNAV all Cats visibility to RVR 5400. ** RVR 1800 authorized with use of FD or AP or HUD to DA.	MALSR 	MISSED APPROACH: Climb to 2500 direct HAGLI and hold.
---	-----------	--

ATIS <b>119.15 263.025</b>	POTOMAC APP CON <b>126.4 282.375</b> (001°-185°) <b>126.75 307.2</b> (186°-360°)	RICHMOND TOWER <b>121.1 257.8</b>	GND CON <b>121.9 348.6</b>	CLNC DEL <b>127.55 348.6</b>
-------------------------------	--	--------------------------------------	-------------------------------	---------------------------------



ELEV <b>168</b>	<b>D</b> TDZE <b>167</b>
-----------------	--------------------------



IFPIG 3000 GP 3.00° TCH 54 6 NM 157° 2500 FIBUG 5 NM 2500 GORDD 2.2 NM to RW16 920* 1.2 NM to RW16 RW16 1.2 NM	VGSi and RNAV glidepath not coincident (VGSi Angle 3.00/TCH 71).		2500	HAGLI
	*LNAV only.			
CATEGORY	A	B	C	D
LPV DA **	367/24		200 (200-½)	
LNAV/VNAV DA	504/31		337 (400-¾)	
LNAV MDA	600/24 433 (500-½)		600/40 433 (500-¾)	
<b>C</b> CIRCLING	660-1 492 (500-1)		700-1½ 532 (600-1½) 720-2 552 (600-2)	

NE-3, 26 MAR 2020 to 23 APR 2020