

WAAS CH 69320 W20A	APP CRS 203°	Rwy Idg TDZE 168 Apt Elev 168
--	------------------------	---

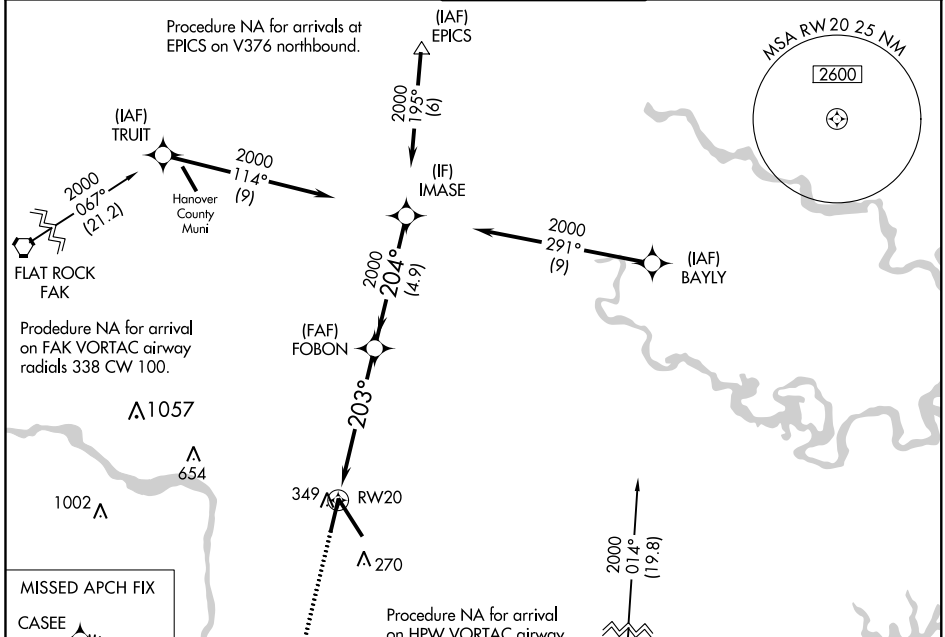
RNAV (GPS) Z RWY 20

RICHMOND INTL (RIC)

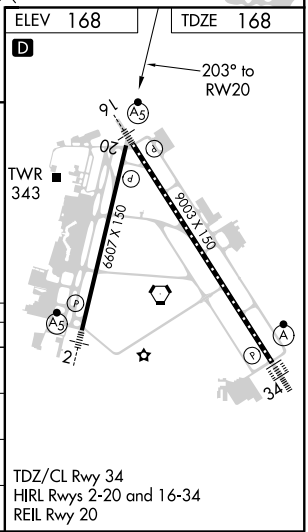
RNP APCH. MISSED APPROACH: Climb to 2000 direct CASEE and hold.

For uncompensated Baro-VNAV systems, LNAV/VNAV NA below -11°C (13°F) or above 54°C (130°F). Rwy 20 helicopter visibility reduction below 3/4 SM NA.

ATIS 119.15 263.025	POTOMAC APP CON 126.4 282.375 (001°-185°) 126.75 307.2 (186°-360°)	RICHMOND TOWER 121.1 257.8	GND CON 121.9 348.6	CLNC DEL 127.55 348.6
-------------------------------	--	--------------------------------------	-------------------------------	---------------------------------



2000	CASEE	*LNAV only.	FOBON	IMASE
↑	✧	*1.5 NM to RWY 20	2000	2000
			203°	204°
			2000	2000
			1.5 NM	4.1 NM
			4.9 NM	
CATEGORY	A	B	C	D
LPV DA		464-7/8	296 (300-7/8)	
LNAV/VNAV DA		603-1 1/2	435 (500-1 1/2)	
LNAV MDA	680-1	512 (600-1)	680-1 3/8	512 (600-1 3/8)
CIRCLING	680-1	512 (600-1)	700-1 1/2 532 (600-1 1/2)	720-2 552 (600-2)



NE-3, 26 MAR 2020 to 23 APR 2020

NE-3, 26 MAR 2020 to 23 APR 2020