

VORTAC RIC 114.1 Chan 88	APP CRS 171°	Rwy Idg TDZE 167 Apt Elev 167	9003
--	------------------------	---	-------------

VOR RWY 16

RICHMOND INTL (RIC)

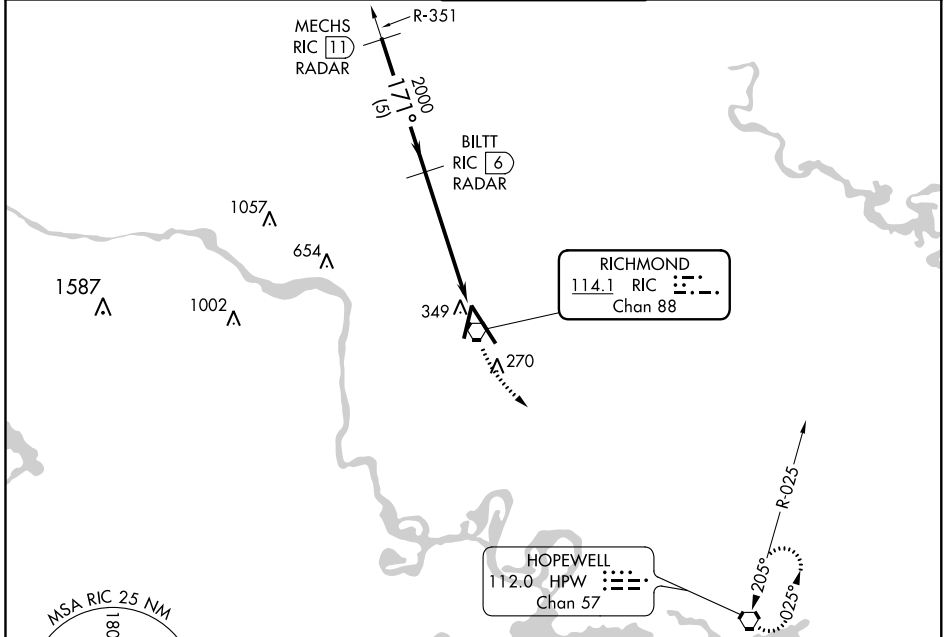
DME or RADAR required. RADAR required for procedure entry.

▼ Rwy 16 helicopter visibility reduction below RVR 4000 NA. For inop ALS, increase S-16 Cat A/B visibility to RVR 5500, and Cat C/D to 1 3/8 SM.

MALSR

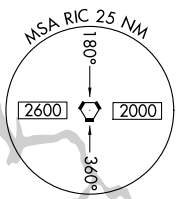
MISSED APPROACH: Climbing left turn to 2000 direct HPW VORTAC and hold.

ATIS 119.15 263.025	POTOMAC APP CON 126.4 282.375 (001°-185°) 126.75 307.2 (186°-360°)	RICHMOND TOWER 121.1 257.8	GND CON 121.9 348.6	CLNC DEL 127.55 348.6
-------------------------------	--	--------------------------------------	-------------------------------	---------------------------------

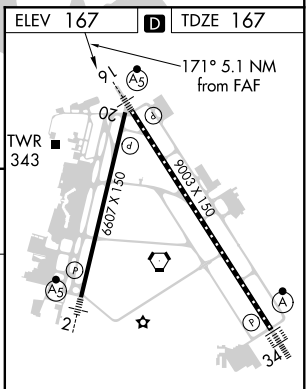
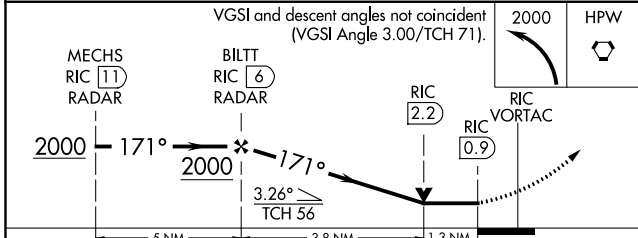


NE-3, 26 MAR 2020 to 23 APR 2020

NE-3, 26 MAR 2020 to 23 APR 2020



ELEV 167	TDZE 167
----------	----------



CATEGORY	A	B	C	D		
S-16	640/40 473 (500-3/4)			640/50 473 (500-1)		
CIRCLING	660-1 493 (500-1)	700-1 1/2 533 (600-1 1/2)		720-2 553 (600-2)		
	TDZ/CL Rwy 34 HIRL Rwys 2-20 and 16-34 REIL Rwy 20					
	FAF to MAP 5.1 NM					
	Knots	60	90	120	150	180
	Min:Sec	5:06	3:24	2:33	2:02	1:42