

VORTAC RIC 114.1 Chan 88	APP CRS 323°	Rwy Idg TDZE 161 Apt Elev 167	9003
--	------------------------	---	-------------

VOR RWY 34

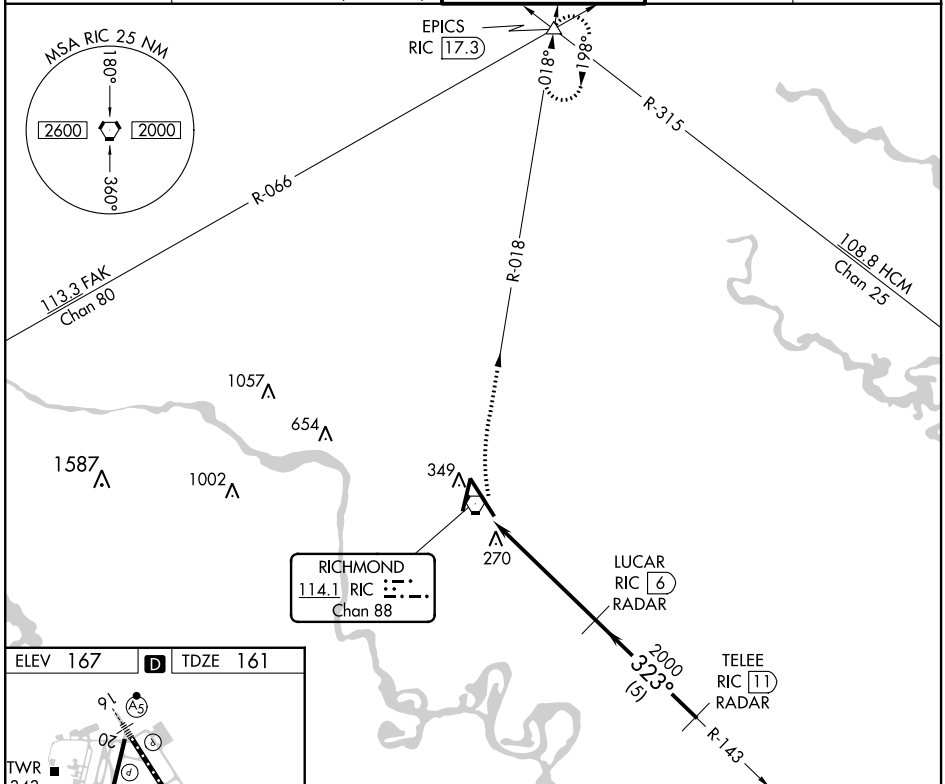
RICHMOND INTL (RIC)

DME or RADAR required. RADAR required for procedure entry.

ALSF-2

MISSED APPROACH: Climbing right turn to 2000 via RIC R-018 to EPICS INT and hold.

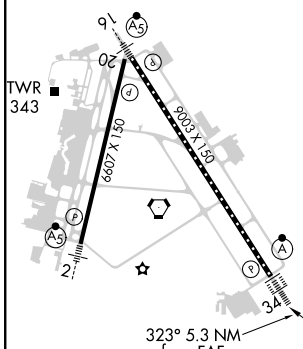
ATIS 119.15 263.025	POTOMAC APP CON 126.4 282.375 (001°-185°) 126.75 307.2 (186°-360°)	RICHMOND TOWER 121.1 257.8	GND CON 121.9 348.6	CLNC DEL 127.55 348.6
-------------------------------	--	--------------------------------------	-------------------------------	---------------------------------



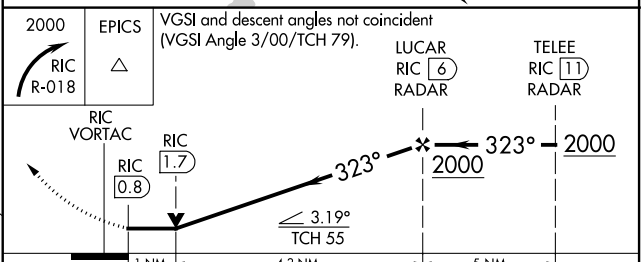
NE-3, 26 MAR 2020 to 23 APR 2020

NE-3, 26 MAR 2020 to 23 APR 2020

ELEV 167	D	TDZE 161
----------	----------	----------



FAF to MAP 5.3 NM					
Knots	60	90	120	150	180
Min:Sec	5:18	3:32	2:39	2:07	1:46



CATEGORY	A	B	C	D
S-34	540/24 379 (400-½)		540/40 379 (400-¾)	540/50 379 (400-1)
C CIRCLING	660-1 493 (500-1)		700-1½ 533 (600-1½)	720-2 553 (600-2)