

(MONAT3.MONAT) 19283

ROANOKE-BLACKSBURG RGNL/WOODRUM FIELD (R.O.A)

MONAT THREE DEPARTURE (RNAV) AI-349 (FAA)

ROANOKE, VIRGINIA

ATIS  
132.375  
CLNC DEL  
119.7  
GND CON  
121.9 257.8  
ROANOKE DEP CON  
126.9 339.8  
ROANOKE TOWER  
118.3 257.8

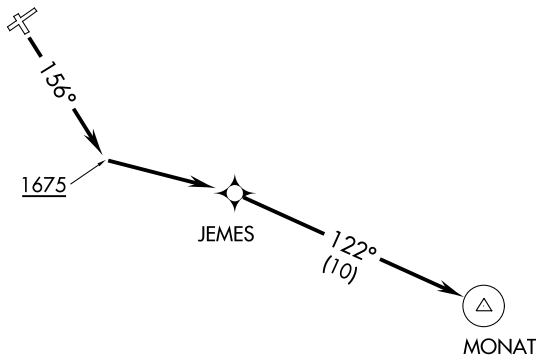
**TOP ALTITUDE:  
5000**

TAKEOFF MINIMUMS:

Rwys 6, 24, 34: NA-Air Traffic.

Rwy 16: Standard with minimum climb  
of 500' per NM to 1675.

ROANOKE  
ROA



NOTE: DME/DME/IRU or GPS required.

NOTE: RADAR required.

NOTE: RNAV 1.

NOTE: Chart not to scale.



DEPARTURE ROUTE DESCRIPTION

TAKEOFF RUNWAY 16: Climb heading 156° to 1675, then direct JEMES, then on track  
122° to MONAT.

... Maintain 5000 or assigned altitude by ATC, expect clearance to filed altitude within 10  
minutes after departure.

MONAT THREE DEPARTURE (RNAV)

ROANOKE, VIRGINIA

(MONAT3.MONAT) 10OCT19

ROANOKE-BLACKSBURG RGNL/WOODRUM FIELD (R.O.A)

NE-3, 26 MAR 2020 to 23 APR 2020

NE-3, 26 MAR 2020 to 23 APR 2020