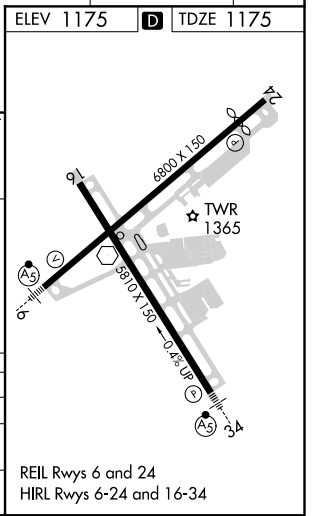
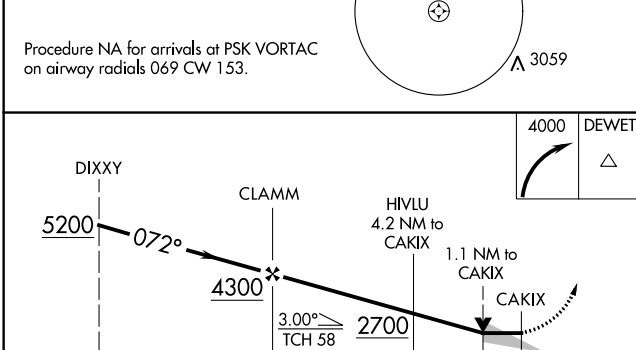
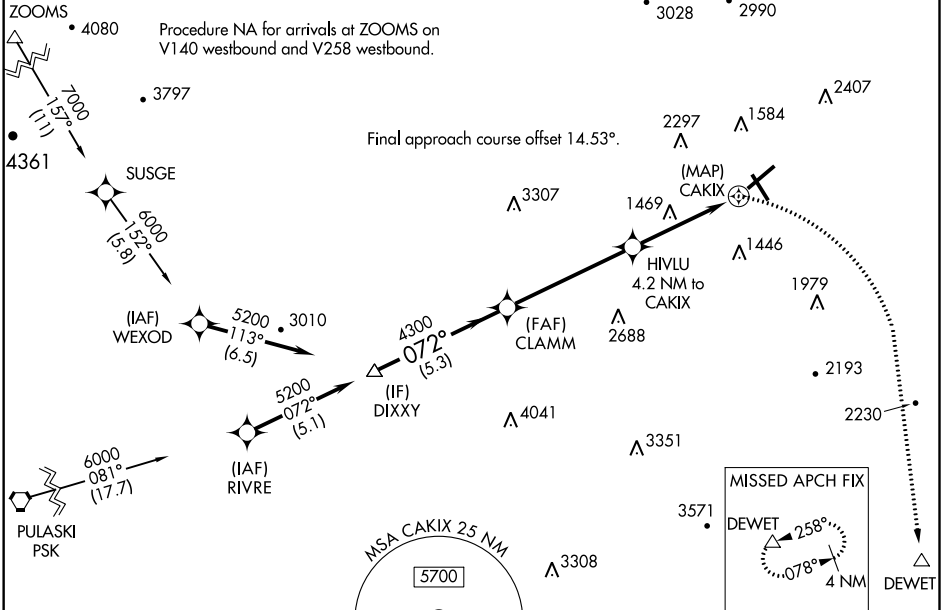


APP CRS	Rwy Idg	6800
072°	TDZE	1175
	Apt Elev	1175

RNAV (GPS) Y RWY 6

ROANOKE-BLACKSBURG RGNL/WOODRUM FIELD (ROA)

RNP APCH.		MALSR		MISSED APPROACH: Climbing right turn to 4000 direct DEWET and hold. ** Missed approach requires minimum climb of 276 feet per NM to 2700.	
<p>▼ Circling NA northwest of Rwy 6-24. For inop ALS, increase LNAV ** Cat A and B visibility to 1 SM, LNAV Cat A visibility to 1 SM, and LNAV Cat C and D visibility to 2 1/2 SM.</p> <p>⚠ -13°C</p>					
ATIS	ROANOKE APP CON	ROANOKE TOWER	GND CON	CLNC DEL	
132.375	126.9 339.8	118.3 257.8	121.9 257.8	119.7	



CATEGORY	A	B	C	D
LNAV MDA**	1720-3/4	545 (600-3/4)	1720-1/8	545 (600-1/8)
LNAV MDA	1980-3/4	805 (900-3/4)	1980-1/8	805 (900-1/8)
C CIRCLING	1980-1 805 (900-1)	1980-1 1/4 805 (900-1 1/4)	2420-3 1245 (1300-3)	2820-3 1645 (1700-3)

NE-3, 26 MAR 2020 to 23 APR 2020

NE-3, 26 MAR 2020 to 23 APR 2020