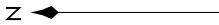


FRDMM FIVE ARRIVAL (RNAV) Transition Route

WASHINGTON, DC

BUCKO TRANSITION (BUCKO.FRDM5):

- NOTE: Radar required.
- NOTE: RNAV 1.
- NOTE: DME/DME/IRU or GPS required.
- NOTE: Turboprops only, turboprops as assigned by ATC only.
- NOTE: PROHIBITED AREA (P56) 1.5 NM north of DCA
- AVOID - surface to FL180.
- NOTE: Maintain last assigned altitude until cleared to "descend via" the FRDM5. ARTCC will issue landing direction assignment (north or south) and Potomac TRACON will issue runway assignments.



POTOMAC APP CON
118.675 323.175
RONALD REAGAN WASHINGTON NATIONAL D-ATIS
132.65
JOINT BASE ANDREWS D-ATIS
133.675 251.05
DAVISON AAF ATIS
128.175



MORGANTOWN
MGW

DRRON
FL310
FL270

BUCKO 17000
FL310 *5500
107° (12)

HONNR
FL280 250K
FL240

BRVRY
FL260
FL220

COURG
FL230 280K
FL200

PLDGE
17000 280K
15000

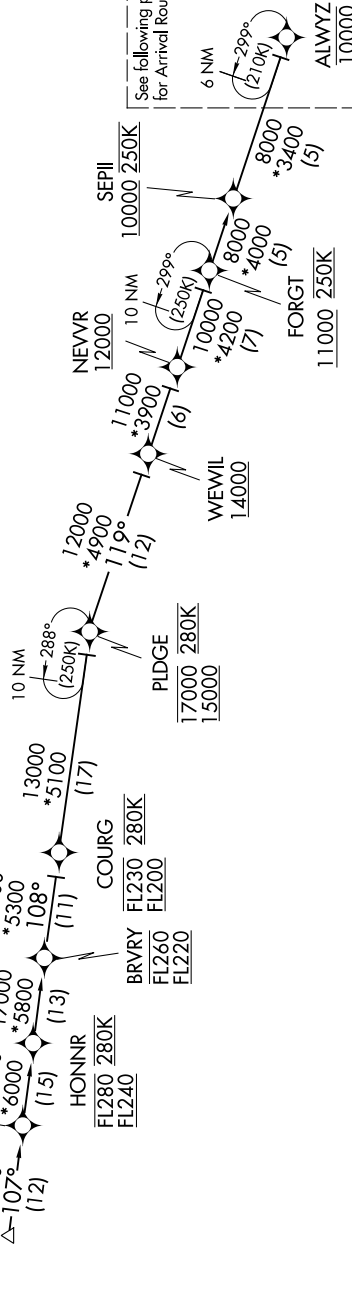
WEWIL
14000

NEWR
12000

FORGT
11000 250K

SEPIL
10000 250K

ALWYZ
10000



See following page
for Arrival Routes.

(CONTINUED ON FOLLOWING PAGE)

FRDMM FIVE ARRIVAL (RNAV) Transition Route

WASHINGTON, DC

NOTE: Chart not to scale.