

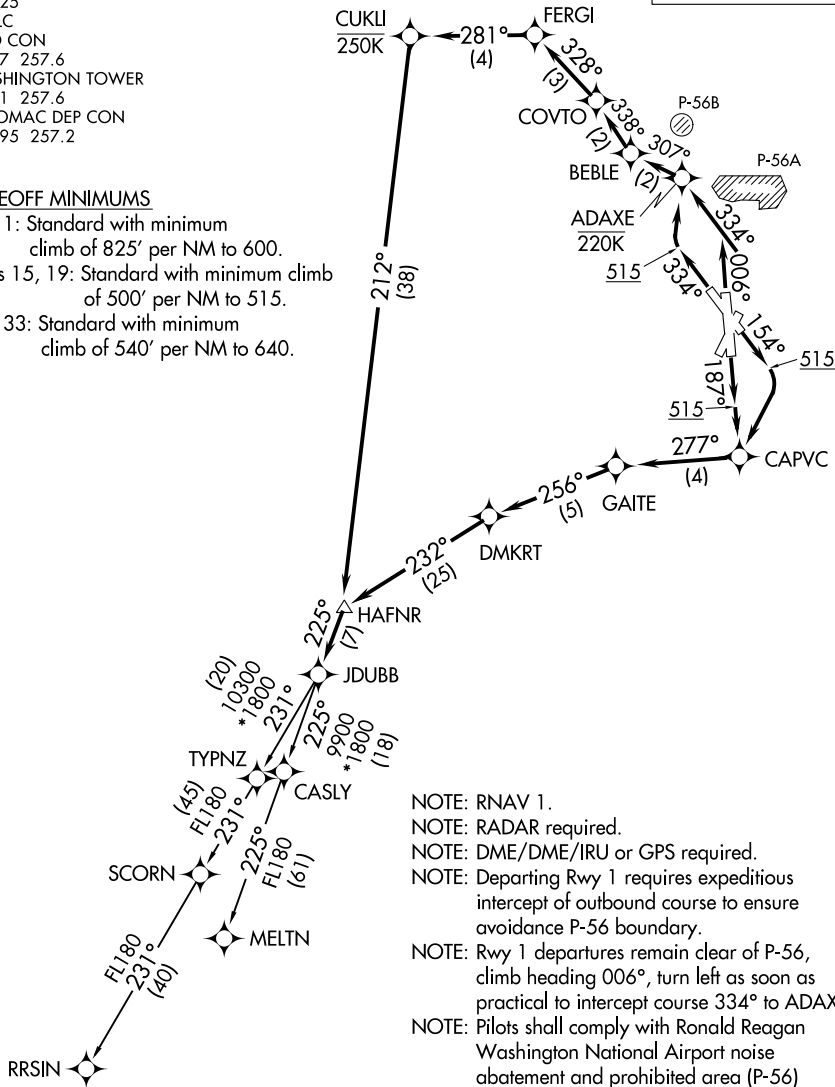
JDUBB THREE DEPARTURE (RNAV)

**TOP ALTITUDE:
5000**

D-ATIS
132.65
CLNC DEL
128.25
CPDLC
GND CON
121.7 257.6
WASHINGTON TOWER
119.1 257.6
POTOMAC DEP CON
118.95 257.2

TAKEOFF MINIMUMS

Rwy 1: Standard with minimum
climb of 825' per NM to 600.
Rwys 15, 19: Standard with minimum climb
of 500' per NM to 515.
Rwy 33: Standard with minimum
climb of 540' per NM to 640.



- NOTE: RNAV 1.
- NOTE: RADAR required.
- NOTE: DME/DME/IRU or GPS required.
- NOTE: Departing Rwy 1 requires expeditious intercept of outbound course to ensure avoidance P-56 boundary.
- NOTE: Rwy 1 departures remain clear of P-56, climb heading 006°, turn left as soon as practical to intercept course 334° to ADAXE.
- NOTE: Pilots shall comply with Ronald Reagan Washington National Airport noise abatement and prohibited area (P-56) avoidance procedures as defined in the Chart Supplement special notices.

(NARRATIVE ON FOLLOWING PAGE)

NOTE: Chart not to scale.

JDUBB THREE DEPARTURE (RNAV)