

LOC/DME I-VVWH	APP CRS	Rwy Idg	<b>6869</b>
<b>108.5</b>	<b>147°</b>	TDZE	<b>13</b>
Chan <b>22</b>		Apt Elev	<b>14</b>

# LDA Z RWY 19

## RONALD REAGAN WASHINGTON NATIONAL (DCA)

**⚠** Inop table does not apply. Circling NA northeast of Rwy 15-33. Rwy 19 helicopter visibility reduction below 1 SM NA. DME required.

**MALSF**  
**MISSED APPROACH:** Climbing right turn to 3000 on DCA VOR/DME R-185 to BADDN/DCA VOR/DME 5.9 DME and hold, continue climb-in-hold to 3000.

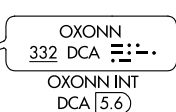
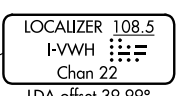
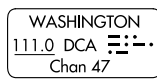
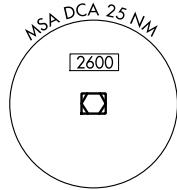
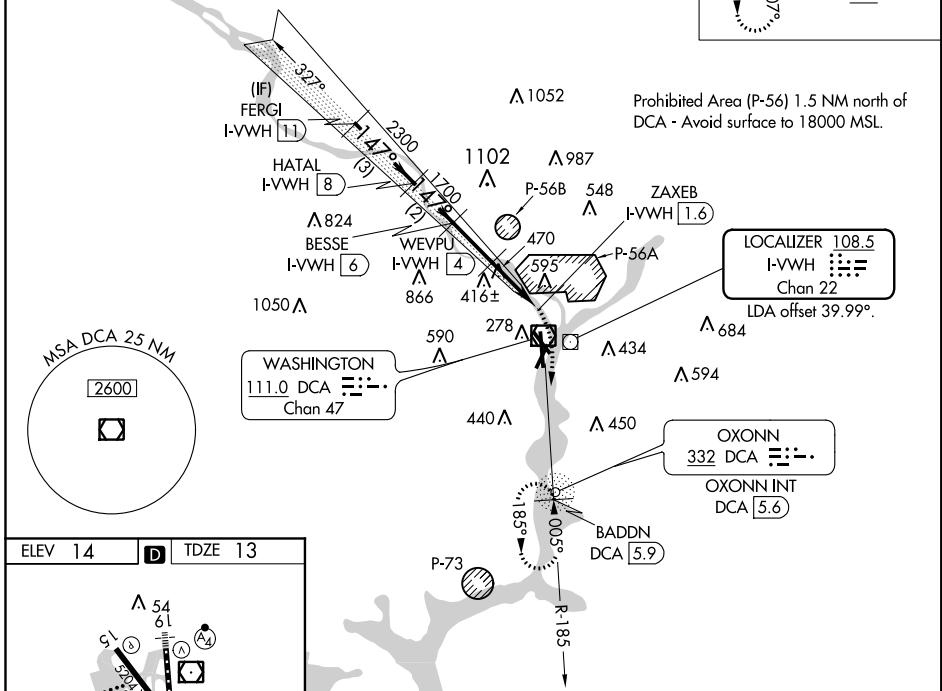
D-ATIS <b>132.65</b>	POTOMAC APP CON <b>119.85 239.25</b> (WEST/SOUTH) (EAST)	WASHINGTON TOWER <b>119.1 257.6</b>	GND CON <b>121.7 257.6</b>	CLNC DEL <b>128.25</b>	CPDLC
-------------------------	---	--	-------------------------------	---------------------------	-------

ALTERNATE MISSED APCH FIX

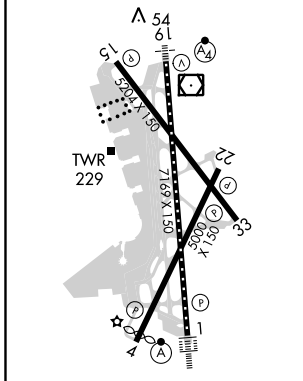


### RADAR REQUIRED

Prohibited Area (P-56) 1.5 NM north of DCA - Avoid surface to 18000 MSL.



ELEV 14	<b>D</b>	TDZE 13
---------	----------	---------



FERG1 I-VVWH 11	HATAL I-VVWH 8	BESSE I-VVWH 6	WEVPU I-VVWH 4	ZAXEB I-VVWH 1.6	3000	BADDN DCA 5.9
3 NM		2 NM		2.4 NM		0.8

CATEGORY	A	B	C	D
S-19	720/55	707 (800-1)	720-2	707 (800-2)
<b>C</b> CIRCLING	720-1	706 (800-1)	840-1 1/2 826 (900-1 1/2)	900-3 886 (900-3)

TDZ/CL Rwy 1  
 MIRL Rwy 4-22  
 REIL Rwy 4, 22, 15 and 33  
 HIRL Rwy 1-19 and 15-33

NE-3, 26 MAR 2020 to 23 APR 2020

NE-3, 26 MAR 2020 to 23 APR 2020