

REBLL FOUR DEPARTURE (RNAV)

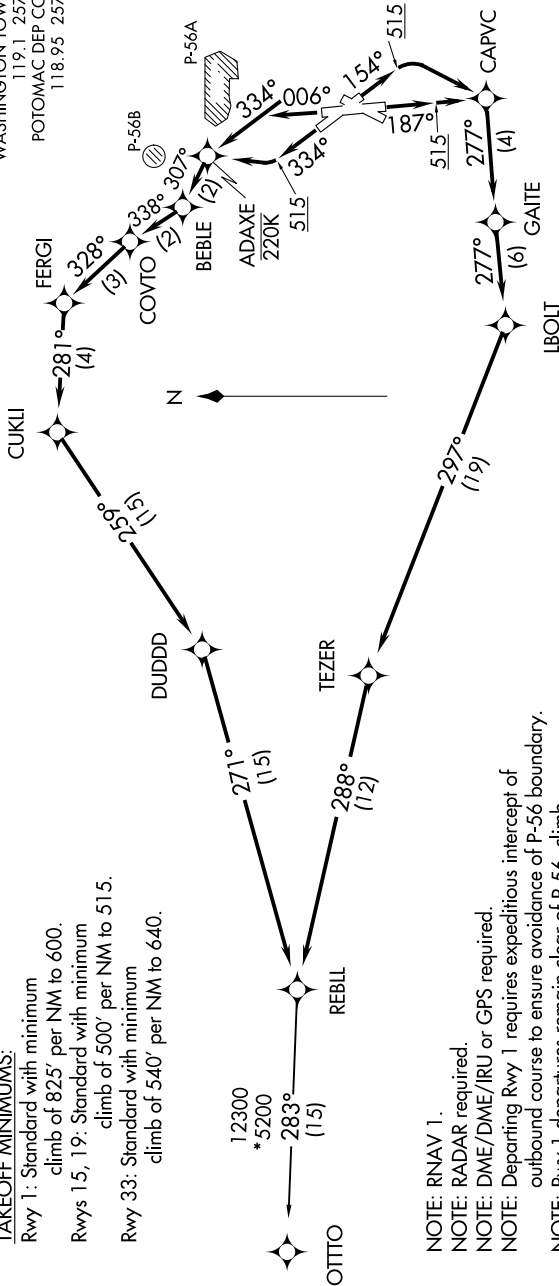
NE-3, 26 MAR 2020 to 23 APR 2020

TOP ALTITUDE:
5000

TAKEOFF MINIMUMS:

- Rwy 1: Standard with minimum climb of 825' per NM to 600.
- Rwys 15, 19: Standard with minimum climb of 500' per NM to 515.
- Rwy 33: Standard with minimum climb of 540' per NM to 640.

12300
*5200
283° (15)



- NOTE: RNAV 1.
- NOTE: RADAR required.
- NOTE: DME/DME/IRU or GPS required.
- NOTE: Departing Rwy 1 requires expeditious intercept of outbound course to ensure avoidance of P-56 boundary.
- NOTE: Rwy 1 departures remain clear of P-56, climb heading 006°, turn left as soon as practical to intercept course 334° to ADAXE.
- NOTE: Pilots shall comply with Ronald Reagan Washington National Airport noise abatement and prohibited area (P-56) avoidance procedures as defined in the Chart Supplement Special Notices.

(NARRATIVE ON FOLLOWING PAGE)

NOTE: Chart not to scale.

NE-3, 26 MAR 2020 to 23 APR 2020