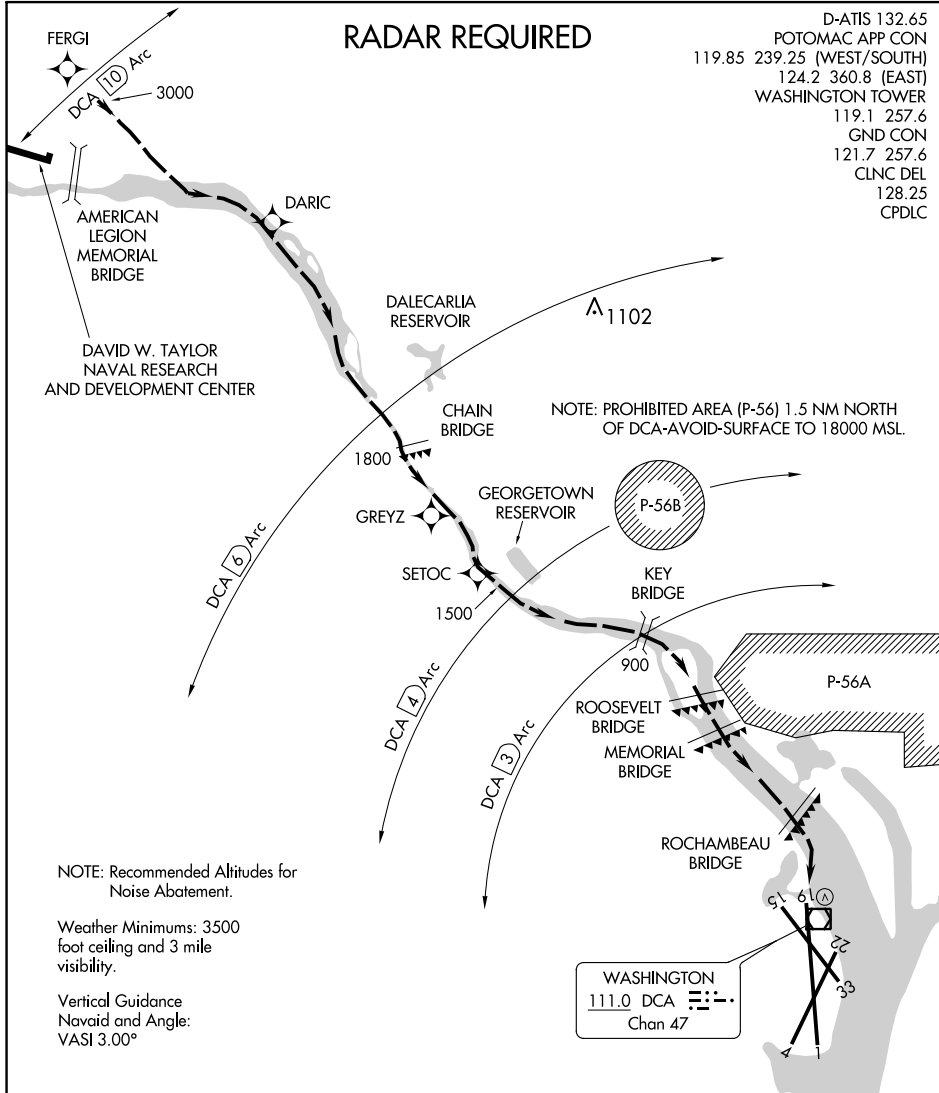


RIVER VISUAL RWY 19

RONALD REAGAN WASHINGTON NATIONAL (DCA)
AL-443 (FAA) WASHINGTON, DC

RADAR REQUIRED

D-ATIS 132.65
 POTOMAC APP CON
 119.85 239.25 (WEST/SOUTH)
 124.2 360.8 (EAST)
 WASHINGTON TOWER
 119.1 257.6
 GND CON
 121.7 257.6
 CLNC DEL
 128.25
 CPDLC



NOTE: Recommended Altitudes for Noise Abatement.

Weather Minimums: 3500 foot ceiling and 3 mile visibility.

Vertical Guidance
Navaid and Angle:
VASI 3.00°

NOTE: PROHIBITED AREA (P-56) 1.5 NM NORTH OF DCA-AVOID-SURFACE TO 18000 MSL.

NE-3, 26 MAR 2020 to 23 APR 2020

NE-3, 26 MAR 2020 to 23 APR 2020

| | | | | | | | |
|------|---|---|---|---|---|---|---|
| 1 NM | 2 | 3 | 4 | 5 | 6 | 7 | 8 |
|------|---|---|---|---|---|---|---|

RIVER VISUAL RWY 19

Aircraft may visually follow the river to the airport, or may proceed via the RNAV (RNP) RWY 19 Approach to SETOC waypoint, then follow the river to the airport.

NOTE: Clearance for visual approach does not authorize penetration of P-56.

RIVER VISUAL RWY 19

Amdt 5 10DEC15

38°51'N-77°02'W

WASHINGTON, DC

RONALD REAGAN WASHINGTON NATIONAL (DCA)