

|             |          |             |
|-------------|----------|-------------|
| APP CRS     | Rwy Idg  | <b>6869</b> |
| <b>007°</b> | TDZE     | <b>14</b>   |
|             | Apt Elev | <b>14</b>   |

# RNAV (RNP) RWY 1

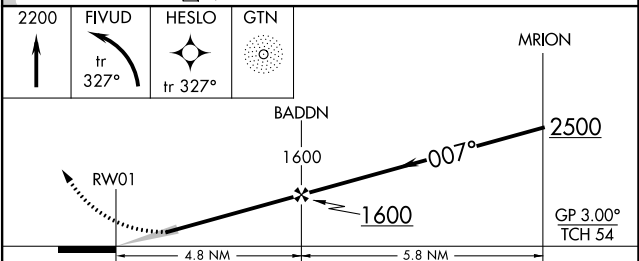
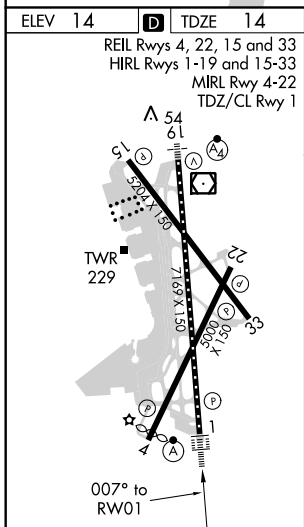
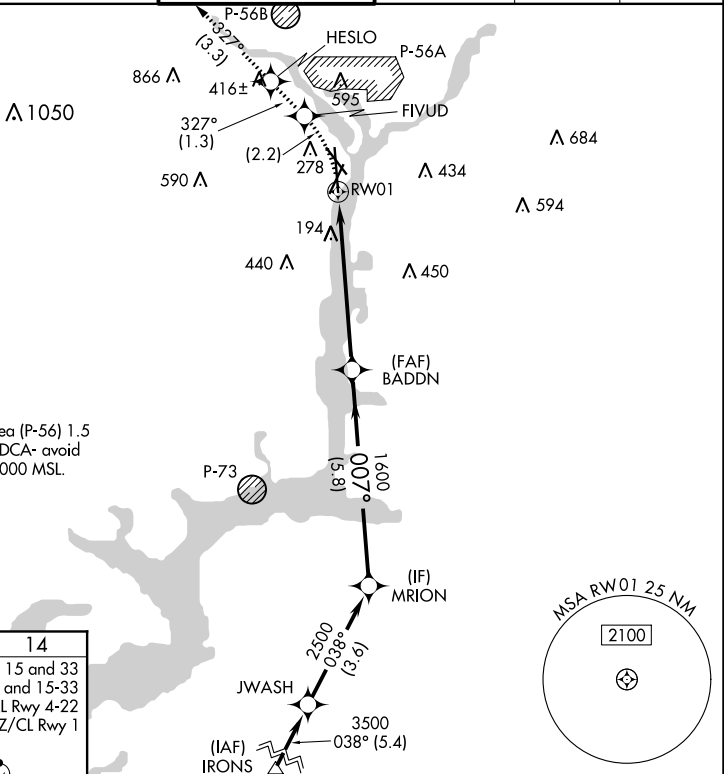
## RONALD REAGAN WASHINGTON NATIONAL (DCA)

**▽** For uncompensated Baro-VNAV systems, procedure NA below -10°C (14°F) or above 48°C (120°F). RF required. GPS required. Missed approach requires RNP less than 1.0. For inop ALS, increase RNP 0.30 all Cats visibility to 1¼ mile.

**ALSF-2**

**MISSED APPROACH:** (Do not exceed 185K until FIVUD) Climb to 2200 left turn to FIVUD and on track 327° to HESLO and on track 327° to GTN NDB and hold.

|               |                 |                            |                    |                    |               |       |
|---------------|-----------------|----------------------------|--------------------|--------------------|---------------|-------|
| D-ATIS        | POTOMAC APP CON |                            | WASHINGTON TOWER   | GND CON            | CLNC DEL      | CPDLC |
| <b>132.65</b> | <b>119.85</b>   | <b>239.25</b> (WEST/SOUTH) | <b>119.1 257.6</b> | <b>121.7 257.6</b> | <b>128.25</b> |       |
|               | <b>124.2</b>    | <b>360.8</b> (EAST)        |                    |                    |               |       |



|             |                     |   |   |   |
|-------------|---------------------|---|---|---|
| CATEGORY    | A                   | B | C | D |
| RNP 0.30 DA | 552/60 538 (600-1¼) |   |   |   |

### AUTHORIZATION REQUIRED