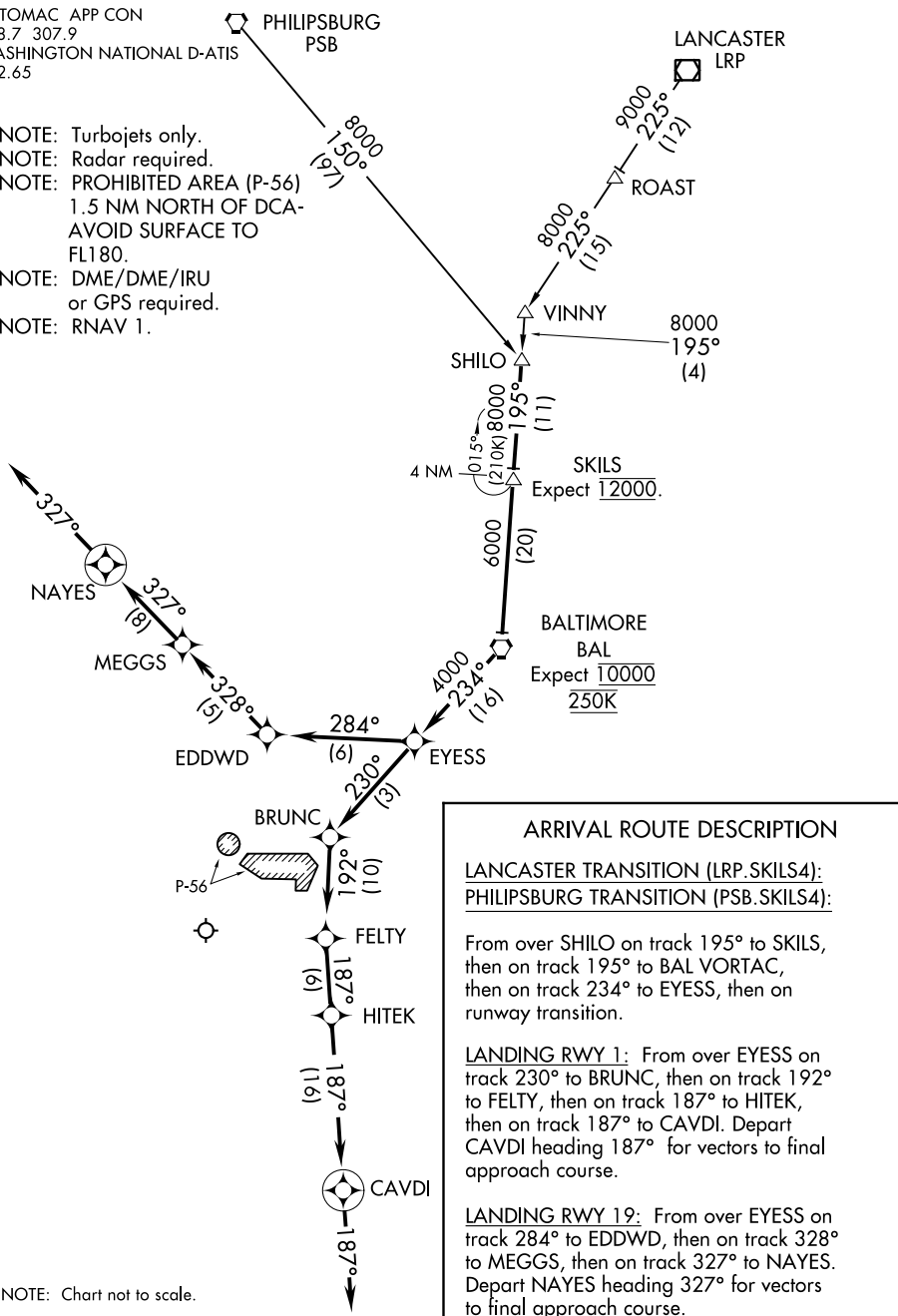


# SKILS FOUR ARRIVAL (RNAV)

RONALD REAGAN WASHINGTON NATIONAL (DCA)

POTOMAC APP CON  
128.7 307.9  
WASHINGTON NATIONAL D-ATIS  
132.65

- NOTE: Turbojets only.
- NOTE: Radar required.
- NOTE: PROHIBITED AREA (P-56)  
1.5 NM NORTH OF DCA-  
AVOID SURFACE TO  
FL180.
- NOTE: DME/DME/IRU  
or GPS required.
- NOTE: RNAV 1.



**ARRIVAL ROUTE DESCRIPTION**

LANCASTER TRANSITION (LRP.SKILS4):  
PHILIPSBURG TRANSITION (PSB.SKILS4):

From over SHILO on track 195° to SKILS, then on track 195° to BAL VORTAC, then on track 234° to EYESS, then on runway transition.

LANDING RWY 1: From over EYESS on track 230° to BRUNC, then on track 192° to FELTY, then on track 187° to HITEK, then on track 187° to CAVDI. Depart CAVDI heading 187° for vectors to final approach course.

LANDING RWY 19: From over EYESS on track 284° to EDDWD, then on track 328° to MEGGS, then on track 327° to NAYES. Depart NAYES heading 327° for vectors to final approach course.

NOTE: Chart not to scale.

NE-3, 26 MAR 2020 to 23 APR 2020

NE-3, 26 MAR 2020 to 23 APR 2020

# SKILS FOUR ARRIVAL (RNAV)

(SKILS.SKILS4) 29MAR18

WASHINGTON, DC  
RONALD REAGAN WASHINGTON NATIONAL (DCA)