

# TIKEE THREE ARRIVAL (RNAV)

WASHINGTON, DC

NE-3, 26 MAR 2020 to 23 APR 2020

## ARRIVAL ROUTE DESCRIPTION

BBONE TRANSITION (BBONE.TIKEE3):

KESSEL TRANSITION (ESL.TIKEE3):

SEALZ TRANSITION (SEALZ.TIKEE3):

All aircraft types landing HEF, 2VG2, NYG, RMN, HWY, CJR, EZF: From TIKEE on track 090° to JETIS, then on heading 090° or as assigned by ATC. Expect RADAR vectors to final approach course.

Props and Turboprop aircraft landing DAA, W00, VKX, ADW, 2W5, DCA, W32: From TIKEE on track 122° to GILFF, then on track 090° to HIGPO, then on heading 090° or as assigned by ATC. Expect RADAR vectors to final approach course.

POTOMAC APP CON  
120.45 306.925  
JOINT BASE ANDREWS ATIS  
113.1 251.05  
DAVISON AAF ATIS  
128.175  
RONALD REAGAN WASHINGTON  
NATIONAL D-ATIS 132.65

NOTE: RADAR required.

NOTE: RNAV 1.

NOTE: DME/DME/IRU or GPS required.

NOTE: Procedure available to all type aircraft landing the following airports: 2VG2, CJR, HWY, HEF, RMN, EZF, NYG.

NOTE: Props or Turboprop aircraft only landing the following airports: DAA, 2W5, VKX, W32, W00, DCA, ADW.

KESSEL  
ESL  
FL190

7000  
\*5200  
178°  
15600  
(3)

7000  
\*5200  
107°  
(12)

7000  
\*6300  
(7)

6300  
087°  
(9)

9000  
LIBEE

5200  
090°  
(3)

TIKEE

5200  
122°  
(41)

JETIS

3000  
1500  
090°  
(3)

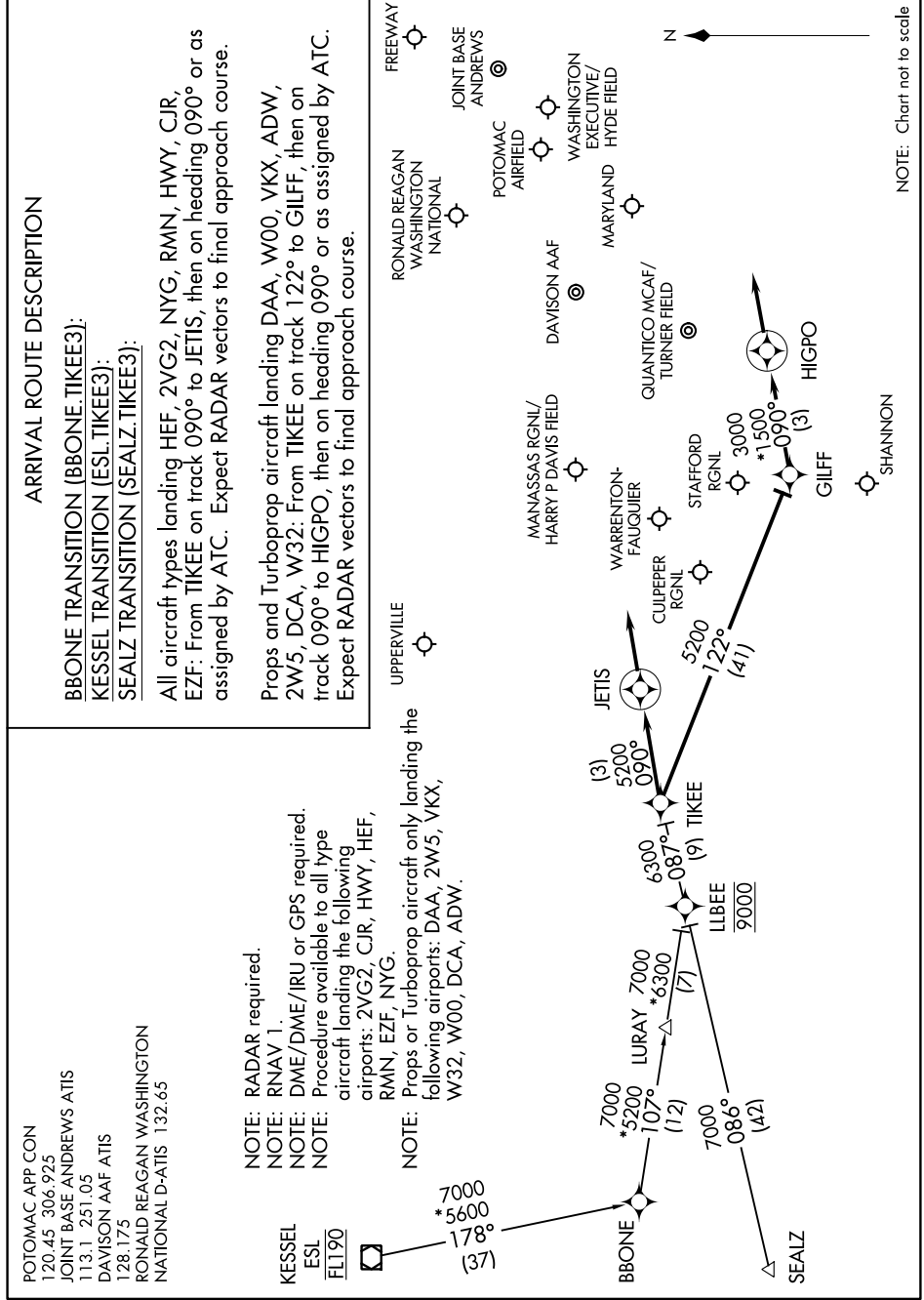
GILFF

3000  
1500  
090°  
(3)

HIGPO

# TIKEE THREE ARRIVAL (RNAV)

WASHINGTON, DC



NOTE: Chart not to scale

NE-3, 26 MAR 2020 to 23 APR 2020