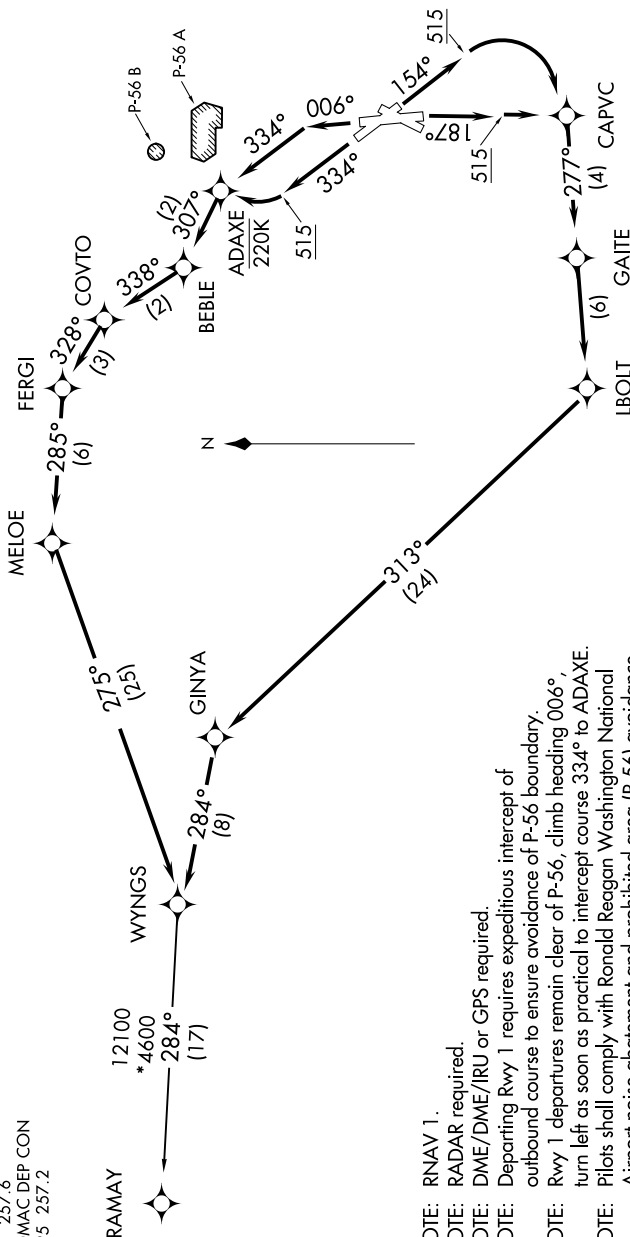


TOP ALTITUDE:  
5000

TAKEOFF MINIMUMS:

- Rwy 1: Standard with minimum climb of 825' per NM to 600.
- Rwys 1,5, 19: Standard with minimum climb of 500' per NM to 515.
- Rwy 33: Standard with minimum climb of 540' per NM to 640.

- D-ATIS 132.65
- CLNC DEL 128.25
- CPDC 121.7 257.6
- GND CON 119.1 257.6
- WASHINGTON TOWER 121.7 257.6
- POTOMAC DEP CON 118.95 257.2



- NOTE: RNAV 1.
- NOTE: RADAR required.
- NOTE: DME/DME/IRU or GPS required.
- NOTE: Departing Rwy 1 requires expeditious intercept of outbound course to ensure avoidance of P-56 boundary.
- NOTE: Rwy 1 departures remain clear of P-56, climb heading 006°, turn left as soon as practical to intercept course 334° to ADAXE.
- NOTE: Pilots shall comply with Ronald Reagan Washington National Airport noise abatement and prohibited area (P-56) avoidance procedures as defined in the Chart Supplement Special Notices.

(NARRATIVE ON FOLLOWING PAGE)

NOTE: Chart not to scale.