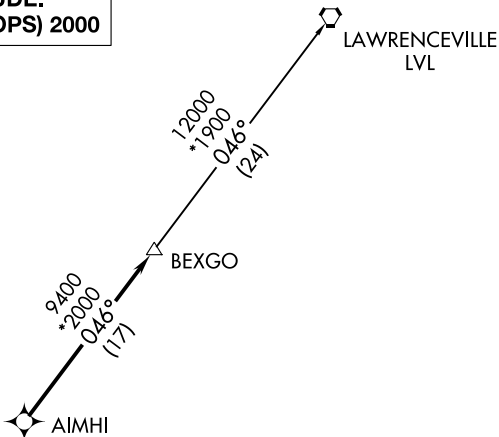


# BEXGO THREE DEPARTURE (RNAV)

D-ATIS  
123.8  
CLNC DEL  
120.1  
CPDLC  
GND CON  
121.9 348.6 (EAST)  
(Rwys 5R-23L, 14-32)  
121.7 348.6 (WEST)  
(Rwy 5L-23R)  
RALEIGH TOWER  
127.45 257.8 (EAST)  
(Rwys 5R-23L, 14-32)  
119.3 257.8 (WEST)  
(Rwy 5L-23R)  
RALEIGH DEP CON  
132.35 256.9

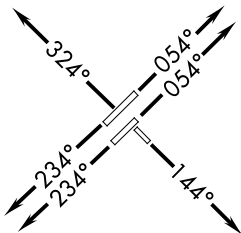
**TOP ALTITUDE:  
(JETS) 7000/(PROPS) 2000**



- NOTE: Transponder code will be assigned via PDC or Raleigh clearance delivery.
- NOTE: If unable to accept climb rate, advise ATC on initial contact.
- NOTE: RNAV 1.
- NOTE: DME/DME/IRU or GPS required.
- NOTE: RADAR required.

### TAKEOFF MINIMUMS

- Rwys 5L, 5R, 14, 23R: Standard with minimum climb of 500' per NM to 940.
- Rwy 23L: Standard with minimum climb of 500' per NM to 1100.
- Rwy 32: 300-1 with minimum climb of 500' per NM to 940.



NOTE: Chart not to scale.



### DEPARTURE ROUTE DESCRIPTION

- TAKEOFF RWYS 5L/5R: Climb heading 054° or as assigned by ATC, expect RADAR vectors to AIMHI, thence. . . .
- TAKEOFF RWY 14: Climb heading 144° or as assigned by ATC, expect RADAR vectors to AIMHI, thence. . . .
- TAKEOFF RWYS 23L/23R: Climb heading 234° or as assigned by ATC, expect RADAR vectors to AIMHI, thence. . . .
- TAKEOFF RWY 32: Climb heading 324° or as assigned by ATC, expect RADAR vectors to AIMHI, thence. . . .

. . . on track 046° to BEXGO, turbojets maintain 7000, propellers maintain 2000.  
Expect clearance to filed altitude within ten minutes after departure.

LAWRENCEVILLE TRANSITION (BEXGO3.LVL)