

LOC/DME I-DMP 111.7 Chan 54	APP CRS 234°	Rwy Idg TDZE Apt Elev 10000 409 435
---	------------------------	---

ILS RWY 23R (CAT II & III)

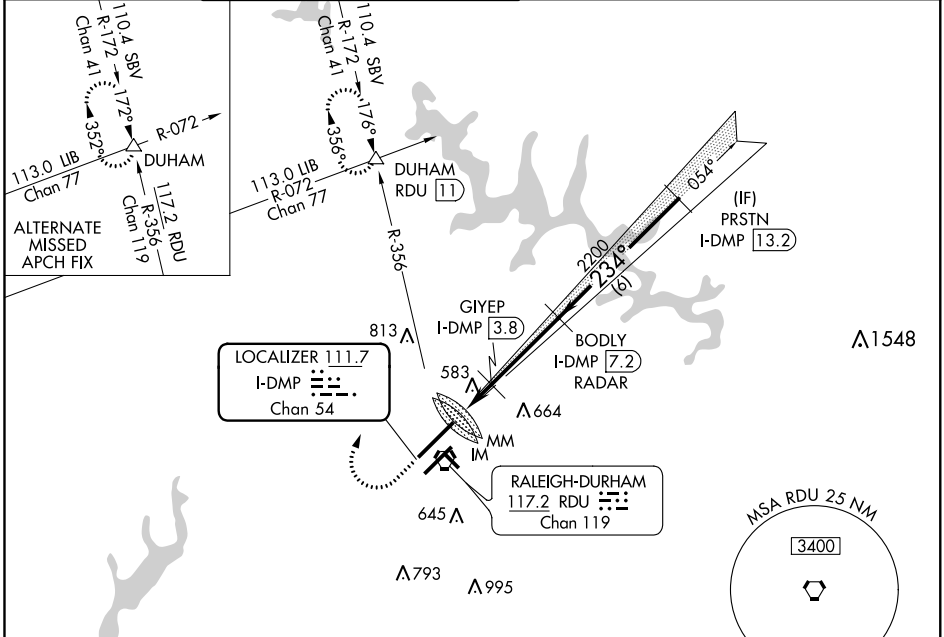
RALEIGH-DURHAM INTL (RDU)

RADAR required for procedure entry, DME or RADAR required. ALSF-2

MISSED APPROACH: Climb to 1000 then climbing right turn to 2200 on heading 030° and on RDU VORTAC R-356 to DUHAM INT/RDU 11 DME and hold.

Simultaneous approach authorized.

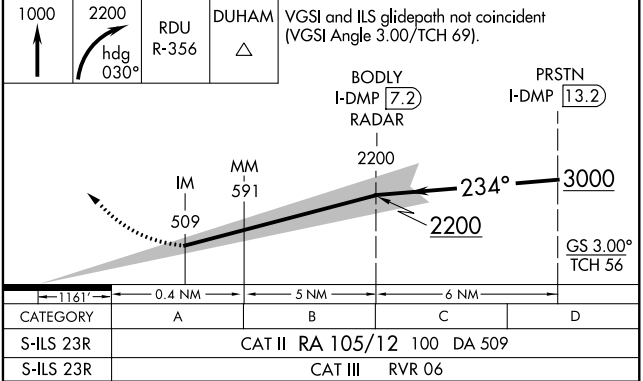
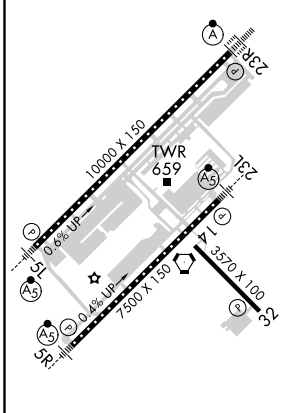
D-ATIS 123.8	RALEIGH APP CON 128.3 307.9	(EAST) RALEIGH TOWER (WEST) 127.45 257.8 119.3 257.8 Rwys 5R-23L and 1-4-32 Rwy 5L-23R	(EAST) GND CON (WEST) 121.9 348.6 121.7 348.6 Rwys 5R-23L and 1-4-32 Rwy 5L-23R	CLNC DEL 120.1	CPDLC
------------------------	---------------------------------------	--	---	--------------------------	-------



SE-2, 26 MAR 2020 to 23 APR 2020

SE-2, 26 MAR 2020 to 23 APR 2020

ELEV 435	D	TDZE 409
-----------------	----------	-----------------



REIL Rwy 32
MIRL Rwy 1-4-32
HIRL Rwys 5R-23L and 5L-23R
TDZ/CL Rwys 23R, 23L and 5L

CATEGORY II & III ILS - SPECIAL AIRCREW & AIRCRAFT CERTIFICATION REQUIRED