

LOC/DME I-DMP <b>111.7</b> Chan <b>54</b>	APP CRS <b>234°</b>	Rwy Idg TDZE Apt Elev <b>10000</b> <b>409</b> <b>435</b>
---	------------------------	---

# ILS or LOC RWY 23R

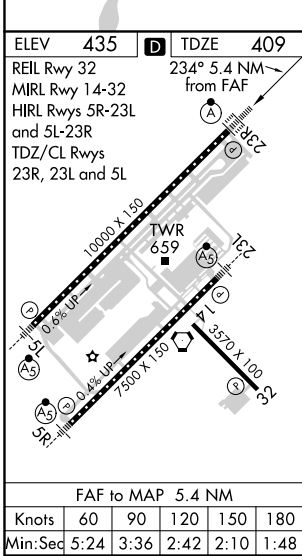
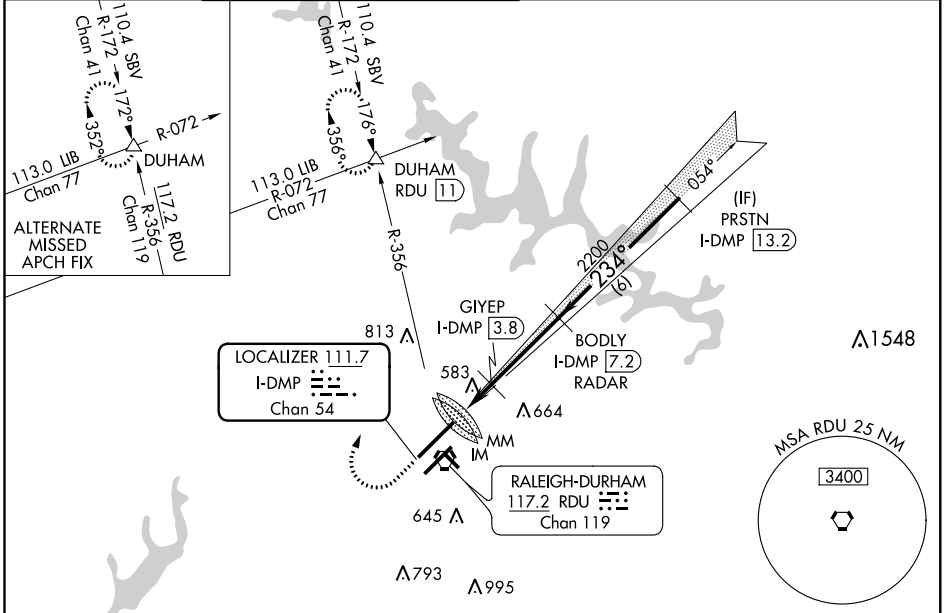
RALEIGH-DURHAM INTL (RDU)

RADAR required for procedure entry, DME or RADAR required. ALSF-2

MISSED APPROACH: Climb to 1000 then climbing right turn to 2200 on heading 030° and on RDU VORTAC R-356 to DUHAM INT/RDU 11 DME and hold.

Simultaneous approach authorized.

D-ATIS <b>123.8</b>	RALEIGH APP CON <b>128.3 307.9</b>	(EAST) RALEIGH TOWER <b>127.45 257.8</b> Rwys 5R-23L and 14-32	(WEST) <b>119.3 257.8</b> Rwy 5L-23R	(EAST) GND CON <b>121.9 348.6</b> Rwys 5R-23L and 14-32	(WEST) <b>121.7 348.6</b> Rwy 5L-23R	CLNC DEL <b>120.1</b>	CPDLC
------------------------	---------------------------------------	--	--	---	--	--------------------------	-------



ELEV 435	TDZE 409	DUHAM	VGS1 and ILS glidepath not coincident (VGS1 Angle 3.00/TCH 69).			
REIL Rwy 32	MIRL Rwy 14-32	HIRL Rwys 5R-23L and 5L-23R	TWIRL Rwy 23R, 23L and 5L	PRSTN I-DMP [13.2]		
*LOC only.			GYEP I-DMP [3.8]	BODY I-DMP [7.2]		
*I-DMP [1.8]			*I-DMP [3.1]	RADAR		
CATEGORY			A	B	C	D
S-ILS 23R			609/18 200 (200-½)			
S-LOC 23R			1160/24 751 (800-½)	1160/40 751 (800-¾)	1160-1¾ 751 (800-1¾)	1160-2 751 (800-2)
CIRCLING			1160-1 725 (800-1)	1160-1¼ 725 (800-1¼)	1160-2¼ 725 (800-2¼)	1160-2½ 725 (800-2½)
GIYEP FIX MINIMUMS						
S-LOC 23R			900/24 491 (500-½)	900/40 491 (500-¾)	900/50 491 (500-1)	900/50 491 (500-1)
CIRCLING			960-1 525 (600-1)	1040-1¾ 605 (700-1¾)	1180-2½ 745 (800-2½)	

SE-2, 26 MAR 2020 to 23 APR 2020

SE-2, 26 MAR 2020 to 23 APR 2020