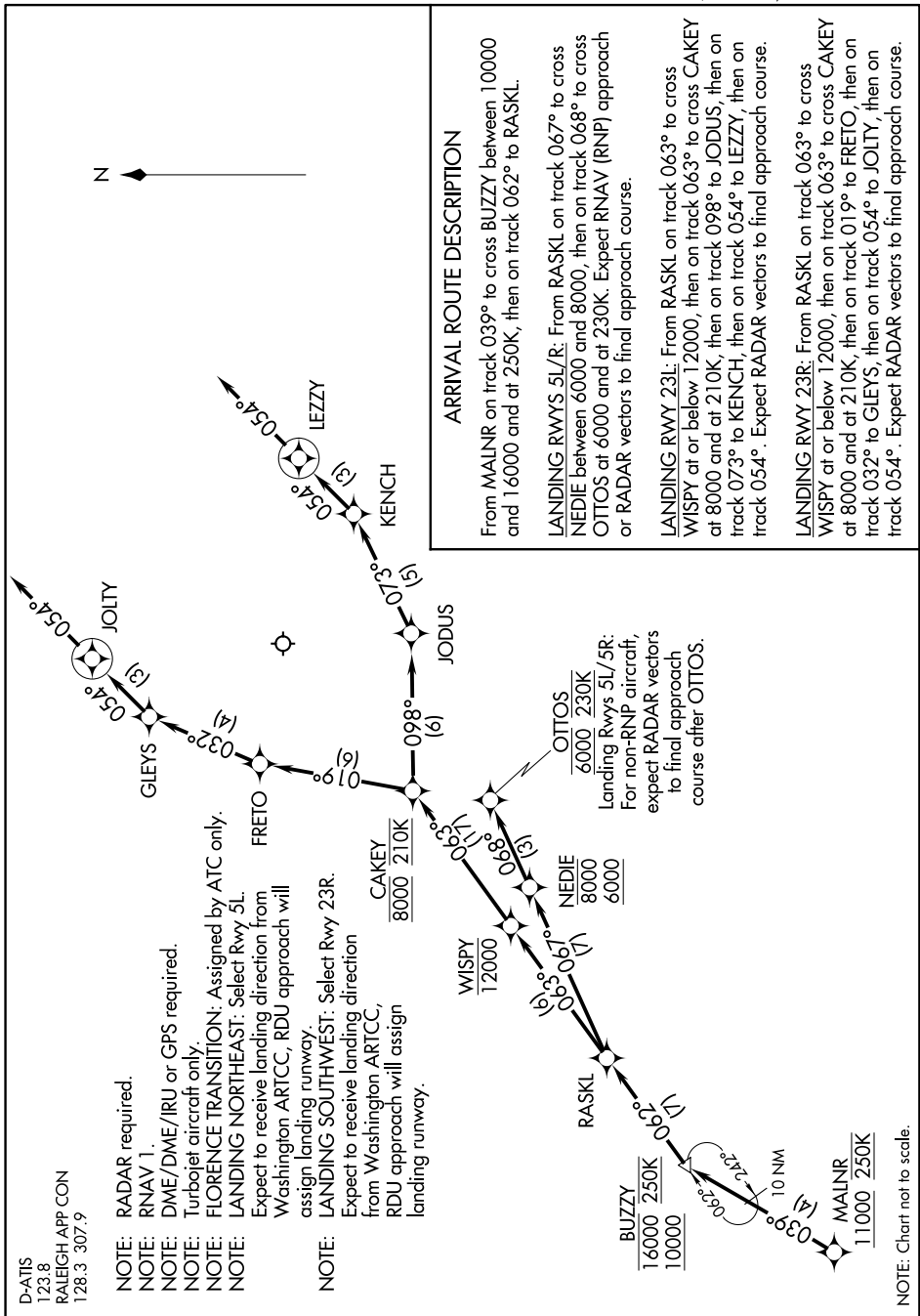


MALNR FOUR ARRIVAL (RNAV)

Arrival Routes

SE-2, 26 MAR 2020 to 23 APR 2020



ARRIVAL ROUTE DESCRIPTION

From MALNR on track 039° to cross BUZZY between 10000 and 16000 and at 250K, then on track 062° to RASKL.

LANDING RWYS 5L/R: From RASKL on track 067° to cross NEDIE between 6000 and 8000, then on track 068° to cross OTTOS at 6000 and at 230K. Expect RNAV (RNP) approach or RADAR vectors to final approach course.

LANDING RWY 23L: From RASKL on track 063° to cross WISPY at or below 12000, then on track 063° to cross CAKEY at 8000 and at 210K, then on track 098° to JODUS, then on track 073° to KENCH, then on track 054° to LEZZY, then on track 054°. Expect RADAR vectors to final approach course.

LANDING RWY 23R: From RASKL on track 063° to cross WISPY at or below 12000, then on track 063° to cross CAKEY at 8000 and at 210K, then on track 019° to FRETTO, then on track 032° to GLEYS, then on track 054° to JOLTY, then on track 054°. Expect RADAR vectors to final approach course.

D-ATIS
123.8
RALEIGH APP CON
128.3 307.9

- NOTE: RADAR required.
- NOTE: RNAV 1.
- NOTE: DME/DME/IRU or GPS required.
- NOTE: Turboprop aircraft only.
- NOTE: FLORENCE TRANSITION: Assigned by ATC only.
- NOTE: LANDING NORTHEAST: Select Rwy 5L.
- NOTE: Expect to receive landing direction from Washington ARTCC. RDU approach will assign landing runway.
- NOTE: LANDING SOUTHWEST: Select Rwy 23R.
- NOTE: Expect to receive landing direction from Washington ARTCC. RDU approach will assign landing runway.

SE-2, 26 MAR 2020 to 23 APR 2020