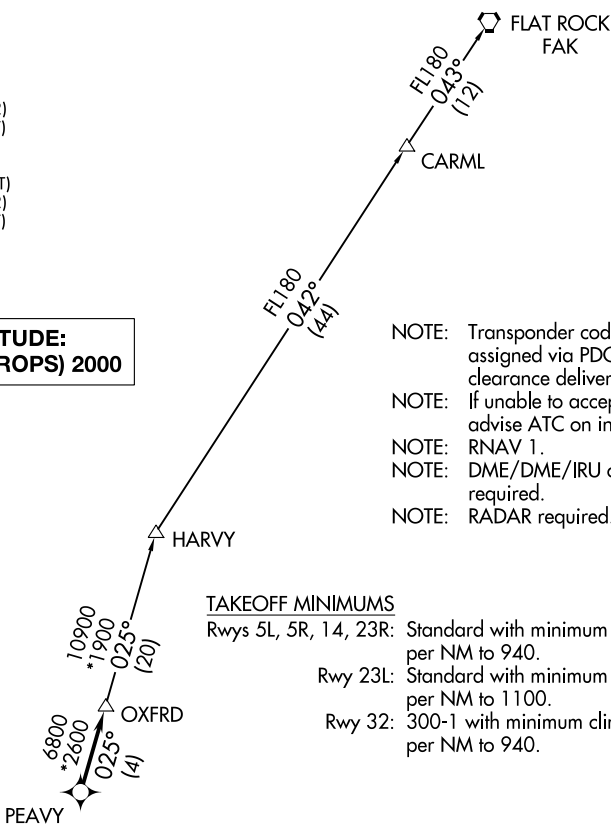


OXFRD THREE DEPARTURE (RNAV)

D-ATIS 123.8
 CLNC DEL 120.1
 CPDLC
 GND CON
 121.9 348.6 (EAST)
 (Rwys 5R-23L, 14-32)
 121.7 348.6 (WEST)
 (Rwy 5L-23R)
 RALEIGH TOWER
 127.45 257.8 (EAST)
 (Rwys 5R-23L, 14-32)
 119.3 257.8 (WEST)
 (Rwy 5L-23R)
 RALEIGH DEP CON
 132.35 256.9

**TOP ALTITUDE:
 (JETS) 7000/(PROPS) 2000**

- NOTE: Transponder code will be assigned via PDC or Raleigh clearance delivery.
- NOTE: If unable to accept climb rate, advise ATC on initial contact.
- NOTE: RNAV 1.
- NOTE: DME/DME/IRU or GPS required.
- NOTE: RADAR required.



TAKEOFF MINIMUMS

- Rwys 5L, 5R, 14, 23R: Standard with minimum climb of 500' per NM to 940.
- Rwy 23L: Standard with minimum climb of 500' per NM to 1100.
- Rwy 32: 300-1 with minimum climb of 500' per NM to 940.



DEPARTURE ROUTE DESCRIPTION

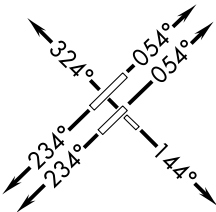
TAKEOFF RWYS 5L/5R: Climb heading 054° or as assigned by ATC, expect RADAR vectors to PEAVY, thence. . . .

TAKEOFF RWY 14: Climb heading 144° or as assigned by ATC, expect RADAR vectors to PEAVY, thence. . . .

TAKEOFF RWYS 23L/23R: Climb heading 234° or as assigned by ATC, expect RADAR vectors to PEAVY, thence. . . .

TAKEOFF RWY 32: Climb heading 324° or as assigned by ATC, expect RADAR vectors to PEAVY, thence. . . .

. . . .on track 025° to OXFRD, turbojets maintain 7000, propellers maintain 2000. Expect clearance to filed altitude within ten minutes after departure.



NOTE: Chart not to scale.

FLAT ROCK TRANSITION (OXFRD3.FAK)