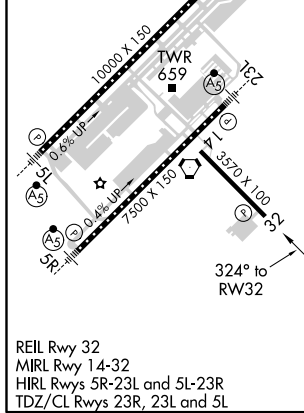
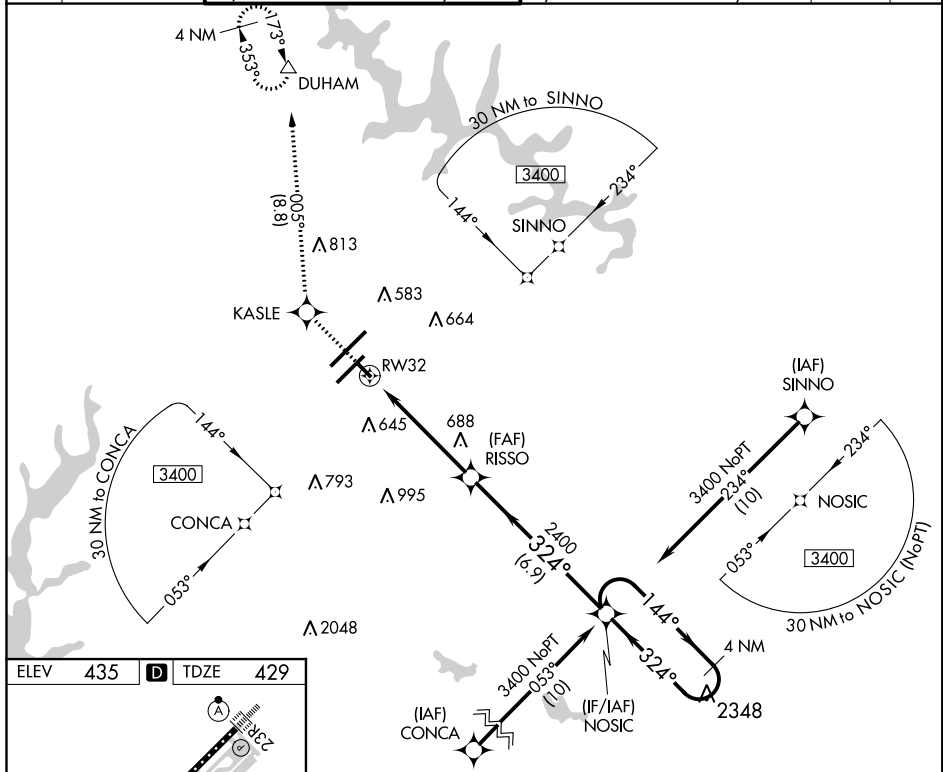


APP CRS	Rwy Idg	3570
324°	TDZE	429
	Apt Elev	435

RNAV (GPS) RWY 32

RALEIGH-DURHAM INTL (RDU)

RNP APCH.		Rwy 32 helicopter visibility reduction below 3/4 SM NA. Baro-VNAV NA below -1.5°C (5°F) or above 48°C (118°F).		MISSED APPROACH: Climb to 2200 direct KASLE and on track 005° to DUHAM and hold.			
D-ATIS	RALEIGH APP CON	(EAST) RALEIGH TOWER	(WEST)	(EAST) GND CON	(WEST)	CLNC DEL	CPDLC
123.8	128.3 307.9	127.45 257.8	119.3 257.8	121.9 348.6	121.7 348.6	120.1	
		Rwys 5R-23L and 14-32	Rwy 5L-23R	Rwys 5R-23L and 14-32	Rwy 5L-23R		



ELEV	435	TDZE	429
2200	KASLE	tr 005°	DUHAM
*LNAV only.		RISSO 2400	NOSIC
*1.3 NM to RWY 32		324°	144° → 3400
1.3 NM		3.8 NM	6.9 NM
GP 3.50°	TCH 45		
CATEGORY	A	B	C
LNAV/VNAV DA	820-1¼ 391 (400-1¼)		NA
LNAV MDA	1000-1	571 (600-1)	1000-1½ 571 (600-1½)
CIRCLING	1000-1¼	565 (600-1¼)	1040-1¾ 605 (700-1¾)

SE-2, 26 MAR 2020 to 23 APR 2020

SE-2, 26 MAR 2020 to 23 APR 2020