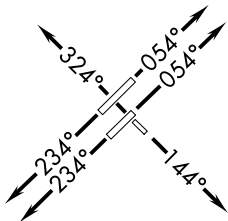


ROZBO THREE DEPARTURE (RNAV)

TOP ALTITUDE:
(JETS) 7000/(PROPS) 2000

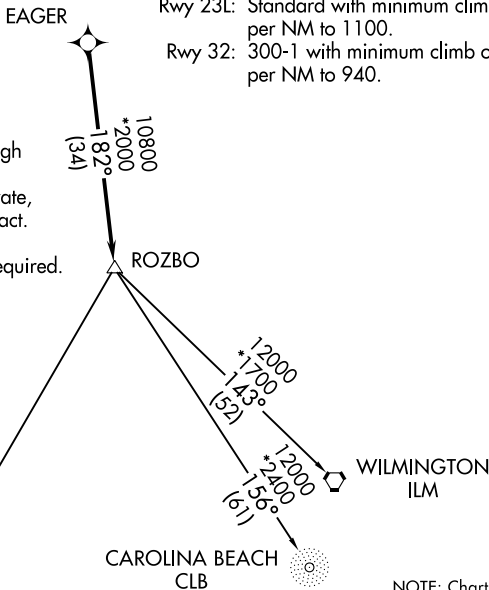
D-ATIS
123.8
CLNC DEL
120.1
CPDLC
GND CON
121.9 348.6 (EAST)
(Rwys 5R-23L, 14-32)
121.7 348.6 (WEST)
(Rwy 5L-23R)
RALEIGH TOWER
127.45 257.8 (EAST)
(Rwys 5R-23L, 14-32)
119.3 257.8 (WEST)
(Rwy 5L-23R)
RALEIGH DEP CON
125.3 353.675



TAKEOFF MINIMUMS

Rwys 5L, 5R, 14, 23R: Standard with minimum climb of 500' per NM to 940.
Rwy 23L: Standard with minimum climb of 500' per NM to 1100.
Rwy 32: 300-1 with minimum climb of 500' per NM to 940.

- NOTE: Transponder code will be assigned via PDC or Raleigh clearance delivery.
NOTE: If unable to accept climb rate, advise ATC on initial contact.
NOTE: RNAV 1.
NOTE: DME/DME/IRU or GPS required.
NOTE: RADAR required.



NOTE: Chart not to scale.

DEPARTURE ROUTE DESCRIPTION

TAKEOFF RWYS 5L/R: Climb heading 054° or as assigned by ATC, expect RADAR vectors to EAGER then on track 182° to ROZBO, thence. . . .
TAKEOFF RWY 14: Climb heading 144° or as assigned by ATC, expect RADAR vectors to EAGER then on track 182° to ROZBO, thence. . . .
TAKEOFF RWYS 23L/R: Climb heading 234° or as assigned by ATC, expect RADAR vectors to EAGER then on track 182° to ROZBO, thence. . . .
TAKEOFF RWY 32: Climb heading 324° or as assigned by ATC, expect RADAR vectors to EAGER then on track 182° to ROZBO, thence. . . .

. . . .on assigned transition, turbojets maintain 7000, propellers maintain 2000. Expect clearance to filed altitude within ten minutes after departure.

CAROLINA BEACH TRANSITION (ROZBO3.CLB)
CHARLESTON TRANSITION (ROZBO3.CHS)
WILMINGTON TRANSITION (ROZBO3.ILM)

ROZBO THREE DEPARTURE (RNAV)

SE-2, 26 MAR 2020 to 23 APR 2020

SE-2, 26 MAR 2020 to 23 APR 2020