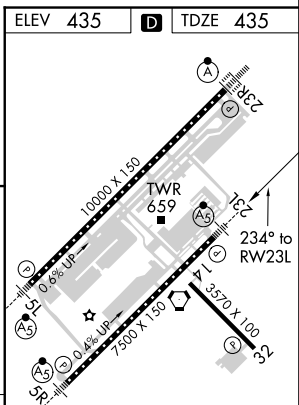
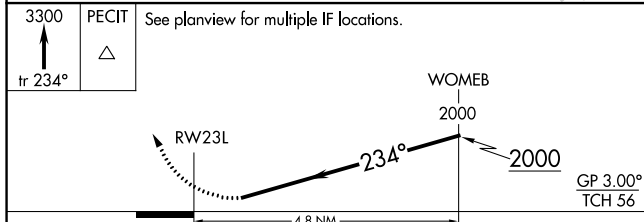
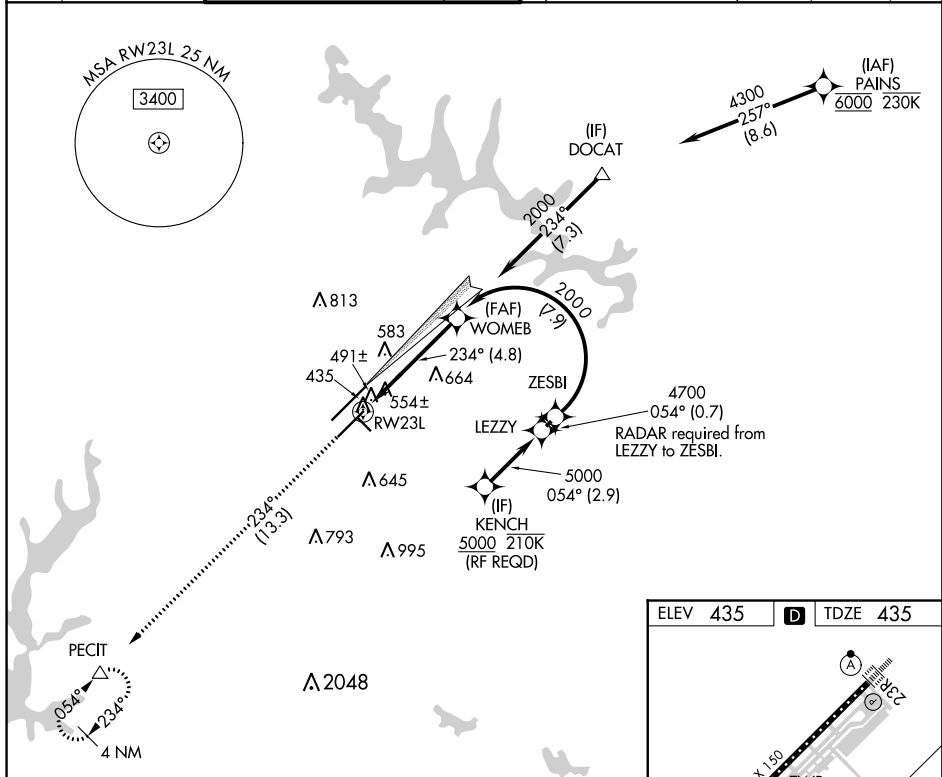


APP CRS 234°	Rwy Idg TDZE Apt Elev	7500 435 435
------------------------	-----------------------------	-----------------------------------------

RNAV (RNP) Z RWY 23L

RALEIGH-DURHAM INTL (RDU)

RNP AR APCH.					MALSR 		MISSED APPROACH: Climb to 3300 on track 234° to PECIT and hold.	
▼ For uncompensated Baro-VNAV systems, LNAV/VNAV NA below -9°C or above 54°C. Use of FD or AP providing RNAV track guidance required during simultaneous operations. Simultaneous approach authorized, except for arrivals at KENCH.								
D-ATIS	RALEIGH APP CON	(EAST) RALEIGH TOWER (WEST)		(EAST) GND CON	(WEST)	CLNC DEL	CPDLC	
123.8	128.3 307.9	127.45 257.8	119.3 257.8	121.9 348.6	121.7 348.6	120.1		
		Rwys 5R-23L and 14-32		Rwy 5L-23R		Rwys 5R-23L and 14-32		Rwy 5L-23R



CATEGORY	A	B	C	D
RNP 0.10 DA		774/40	339 (400-¾)	
RNP 0.30 DA		870/50	435 (500-1)	

AUTHORIZATION REQUIRED

REIL Rwy 32
MIRL Rwy 14-32
HIRL Rwys 5R-23L and 5L-23R
TDZ/CL Rwys 5L, 23L, and 23R

SE-2, 26 MAR 2020 to 23 APR 2020

SE-2, 26 MAR 2020 to 23 APR 2020