

RNAV (RNP) Z RWY 23R

RALEIGH-DURHAM INTL (RDU)

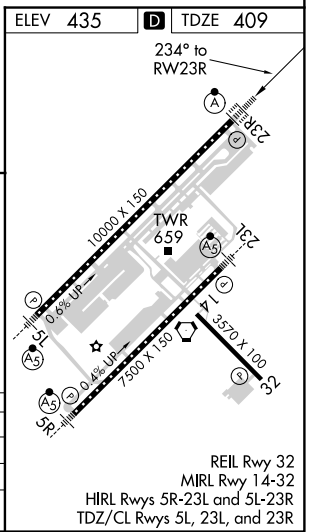
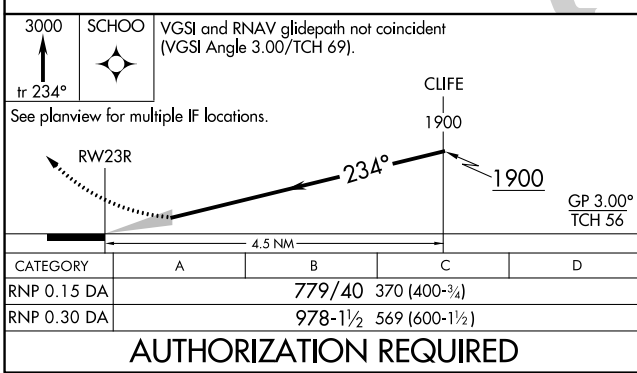
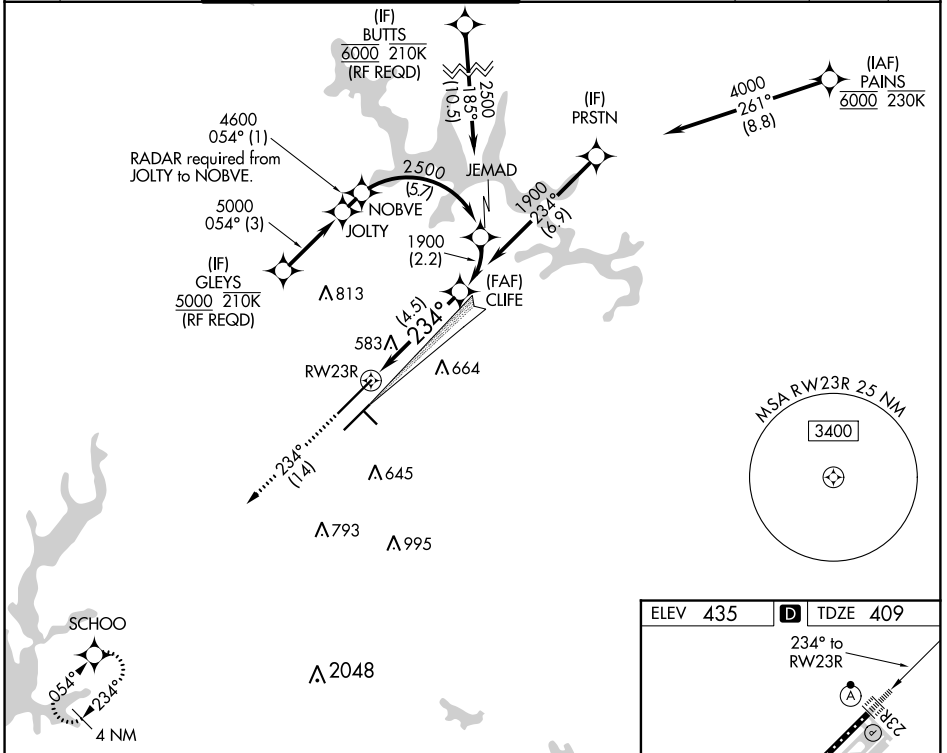
APP CRS	Rwy Idg	10000
234°	TDZE	409
	Apt Elev	435

RNP AR APCH, RF required.

▼ For uncompensated Baro-VNAV systems, procedure NA below -9°C (16°F) or above 54°C (130°F). Use of FD or AP providing RNAV track guidance required during simultaneous operations. Simultaneous approach authorized with ILS or LOC RWY 23L, RNAV (GPS) Y RWY 23L, except for arrivals at GLEYS and BUTTS. For inop ALS, increase RNP 0.15 all Cats visibility to 1¼, increase RNP 0.30 all Cats visibility to 1½.

ALSIF-2	MISSED APPROACH:
	Climb to 3000 on track 234° to SCHOO and hold.

D-ATIS	RALEIGH APP CON	(EAST) RALEIGH TOWER (WEST)	(EAST) GND CON	(WEST)	CLNC DEL	CPDLC
123.8	128.3 307.9	127.45 257.8 Rwys 5R-23L and 14-32	119.3 257.8 Rwy 5L-23R	121.9 348.6 Rwys 5R-23L and 14-32	121.7 348.6 Rwy 5L-23R	120.1



SE-2, 26 MAR 2020 to 23 APR 2020

SE-2, 26 MAR 2020 to 23 APR 2020