

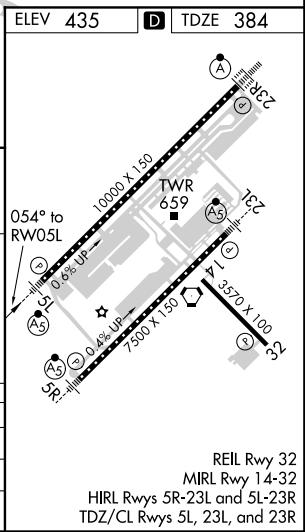
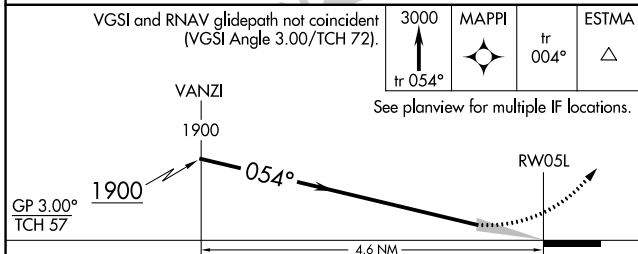
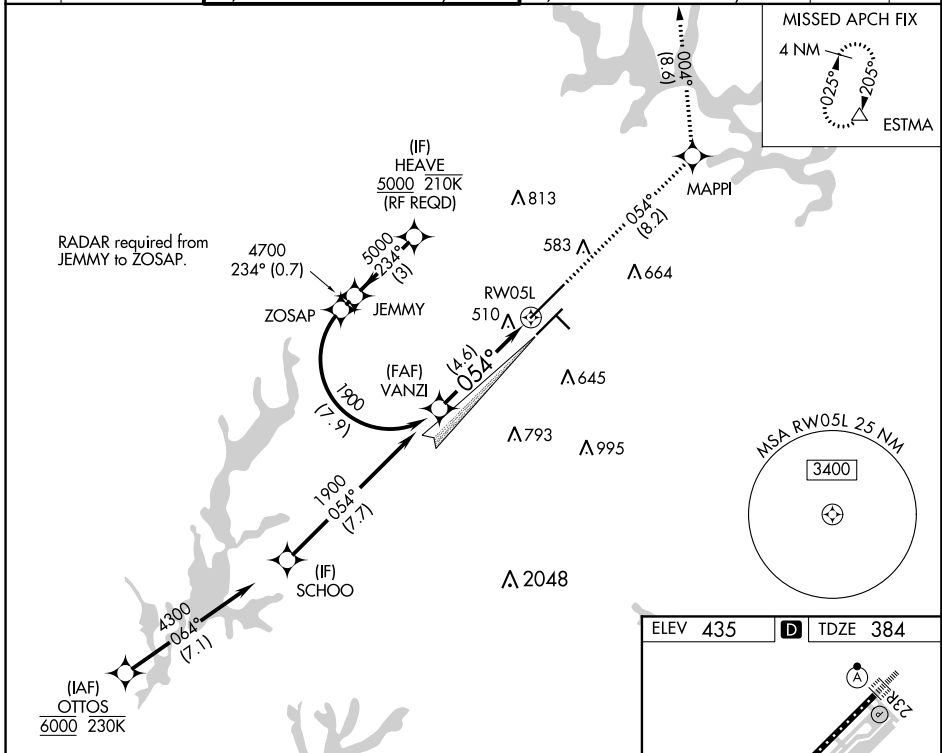
APP CRS 054°	Rwy Idg 10000 TDZE 384 Apt Elev 435
------------------------	--

RNAV (RNP) Z RWY 5L

RALEIGH-DURHAM INTL (RDU)

RNP AR APCH.	MALSRL	MISSED APPROACH: Climb to 3000 on track 054° to MAPPI and on track 004° to ESTMA and hold.
<p>▼ For uncompensated Baro-VNAV systems, LNAV/VNAV NA below -9°C or above 47°C. Simultaneous approach authorized. Use of FD or AP providing RNAV track guidance required during simultaneous operations. For inop ALS, increase RNP 0.10 all Cats visibility to RVR 6000 and RNP 0.30 all Cats visibility to 1%.</p>		

D-ATIS	RALEIGH APP CON	(EAST) RALEIGH TOWER (WEST)	(EAST) GND CON	(WEST)	CLNC DEL	CPDLC
123.8	128.3 307.9	127.45 257.8 Rwys 5R-23L and 14-32	119.3 257.8 Rwy 5L-23R	121.9 348.6 Rwys 5R-23L and 14-32	121.7 348.6 Rwy 5L-23R	120.1



CATEGORY	A	B	C	D
RNP 0.10 DA		727/30	343 (300-5%)	
RNP 0.30 DA		821/50	437 (400-1)	

AUTHORIZATION REQUIRED

SE-2, 26 MAR 2020 to 23 APR 2020

SE-2, 26 MAR 2020 to 23 APR 2020