

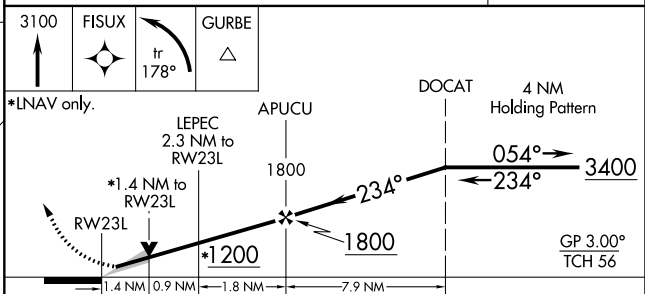
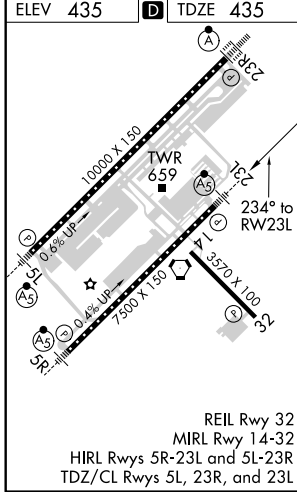
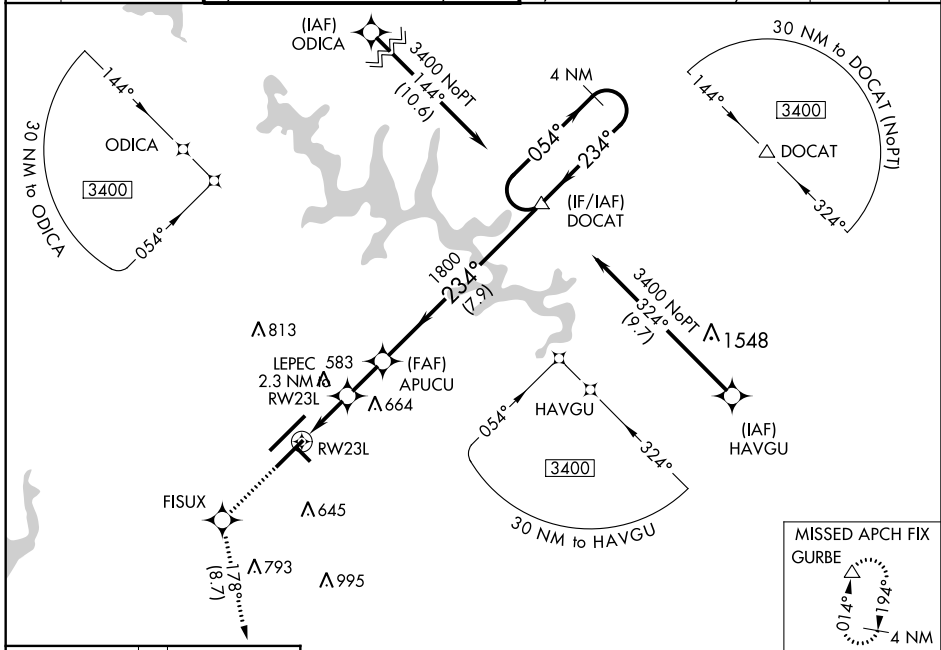
WAAS CH <b>65713</b> <b>W23B</b>	APP CRS <b>234°</b>	Rwy Idg TDZE <b>435</b> Apt Elev <b>435</b>
--	------------------------	---

# RNAV (GPS) Y RWY 23L

RALEIGH-DURHAM INTL (RDU)

RNP APCH.	MALSRL	MISSED APPROACH: Climb to 3100 direct FISUX and left turn on track 178° to GURBE and hold.
<p>▼ For uncompensated Baro-VNAV systems, LNAV/VNAV NA below -10°C (14°F) or above 54°C (130°F). Simultaneous approach authorized. LNAV procedure NA during simultaneous operations. Use of FD or AP required during simultaneous operations. For inop ALS, increase LNAV Cat C/D visibility to 1½ SM.</p> <p>▲</p>		

D-ATIS	RALEIGH APP CON	(EAST) RALEIGH TOWER	(WEST)	(EAST) GND CON	(WEST)	CLNC DEL	CPDLC
123.8	128.3 307.9	127.45 257.8 Rwys 5R-23L and 1-4-32	119.3 257.8 Rwy 5L-23R	121.9 348.6 Rwys 5R-23L and 1-4-32	121.7 348.6 Rwy 5L-23R	120.1	



CATEGORY	A	B	C	D
LPV DA		635/18	200 (200-½)	
LNAV/VNAV DA		820/35	385 (400-¾)	
LNAV MDA	920/24	485 (500-½)	920/50	485 (500-1)
<b>CIRCLING</b>	960-1	525 (600-1)	1040-1¾ 605 (700-1¾)	1180-2½ 745 (800-2½)

SE-2, 26 MAR 2020 to 23 APR 2020

SE-2, 26 MAR 2020 to 23 APR 2020