

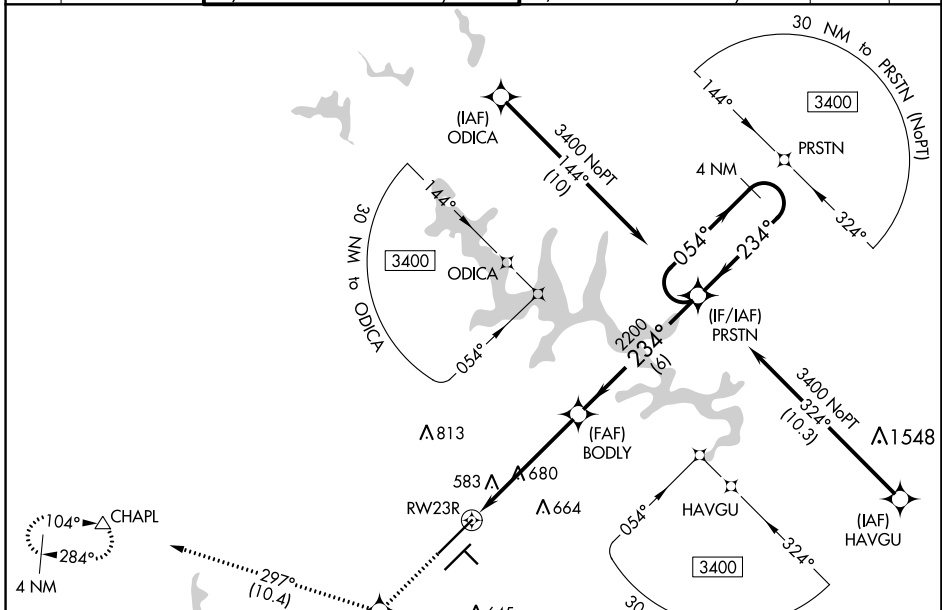
| | | |
|--|------------------------|--|
| WAAS CH 45613 W23A | APP CRS 234° | Rwy Idg 10000 TDZE 409 Apt Elev 435 |
|--|------------------------|--|

RNAV (GPS) Y RWY 23R

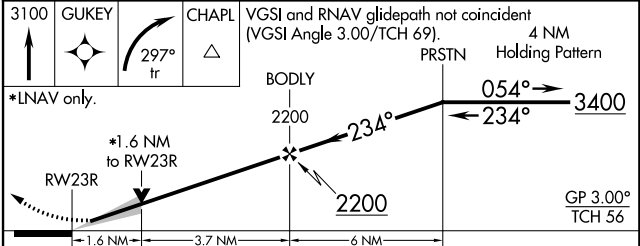
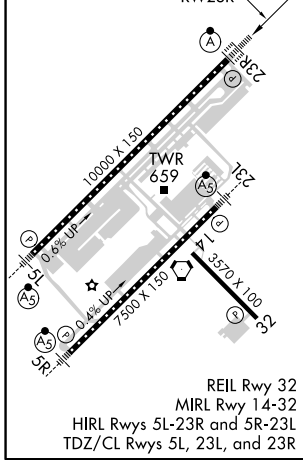
RALEIGH-DURHAM INTL (RDU)

| | | | |
|-----------|---|------------|---|
| RNP APCH. | For uncompensated Baro-VNAV systems, LNAV/VNAV NA below -15°C (5°F) or above 48°C (118°F). Simultaneous approach authorized. LNAV procedure NA during simultaneous operations. Use of FD or AP providing RNAV track guidance required during simultaneous operations. | ALSF-2 | MISSED APPROACH: Climb to 3100 direct GUKEY and right turn on 297° track to CHAPL and hold. |
| | | | |

| | | | | | |
|--------------|--------------------|--|----------------------------------|---|----------------------------------|
| D-ATIS | RALEIGH APP CON | (EAST) RALEIGH TOWER (WEST) | (EAST) GND CON (WEST) | CLNC DEL | CPDLC |
| 123.8 | 128.3 307.9 | 127.45 257.8 Rwys 5R-23L and 14-32 | 119.3 257.8 Rwy 5L-23R | 121.9 348.6 Rwys 5R-23L and 14-32 | 121.7 348.6 Rwy 5L-23R |



| | | |
|-----------------|----------|-----------------|
| ELEV 435 | D | TDZE 409 |
|-----------------|----------|-----------------|



| CATEGORY | A | B | C | D |
|--------------|---------|-------------|-------------------------|-------------------------|
| LPV DA | | 609/18 | 200 (200-½) | |
| LNAV/VNAV DA | | 927/60 | 518 (500-1¼) | |
| LNAV MDA | 1000/24 | 591 (600-½) | 1000/50 591 (600-1) | 1000/60 591 (600-1¼) |
| CIRCLING | 1000-1 | 565 (600-1) | 1040-1¾ 605 (700-1¾) | 1180-2½ 745 (800-2½) |

SE-2, 26 MAR 2020 to 23 APR 2020

SE-2, 26 MAR 2020 to 23 APR 2020