

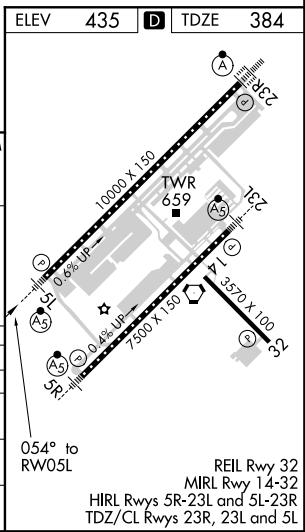
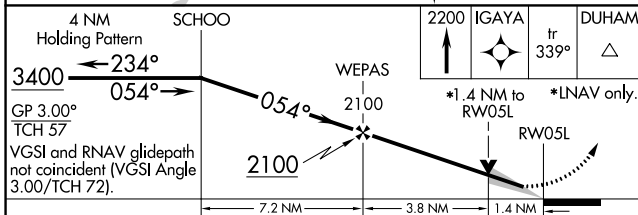
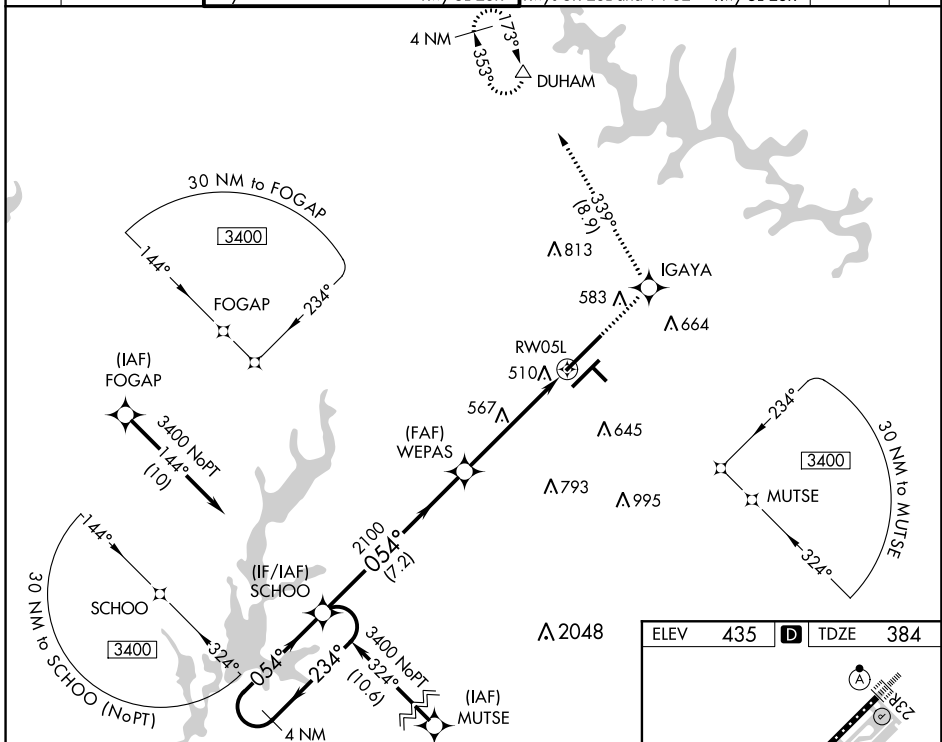
WAAS CH 48813 W05A	APP CRS 054°	Rwy Idg 10000 TDZE 384 Apt Elev 435
--	------------------------	--

RNAV (GPS) Y RWY 5L

RALEIGH-DURHAM INTL (RDU)

RNP APCH.	For uncompensated Baro-VNAV systems, LNAV/VNAV NA below -1.5°C (5°F) or above 48°C (118°F). Simultaneous approach authorized. LNAV procedure NA during simultaneous operations. Use of FD or AP providing RNAV track guidance required during simultaneous operations.	MALSR	MISSED APPROACH: Climb to 2200 direct IGAYA and on track 339° to DUHAM and hold.
-----------	--	-------	--

D-ATIS	RALEIGH APP CON	(EAST) RALEIGH TOWER	(WEST)	(EAST) GND CON	(WEST)	CLNC DEL	CPDLC
123.8	128.3 307.9	127.45 257.8	119.3 257.8	121.9 348.6	121.7 348.6	120.1	
		Rwys 5R-23L and 14-32	Rwy 5L-23R	Rwys 5R-23L and 14-32	Rwy 5L-23R		



CATEGORY	A	B	C	D
LPV DA		595/24	211 (200-1/2)	
LNAV/VNAV DA		792/50	408 (400-1)	
LNAV MDA	880/24	496 (500-1/2)	880/40 496 (500-3/4)	880/50 496 (500-1)
CIRCLING	960-1	525 (600-1)	1040-1 3/4 605 (700-1 3/4)	1180-2 1/2 745 (800-2 1/2)

SE-2, 26 MAR 2020 to 23 APR 2020

SE-2, 26 MAR 2020 to 23 APR 2020

REIL Rwy 32
MIRL Rwy 14-32
HIRL Rwys 5R-23L and 5L-23R
TDZ/CL Rwys 23R, 23L and 5L