

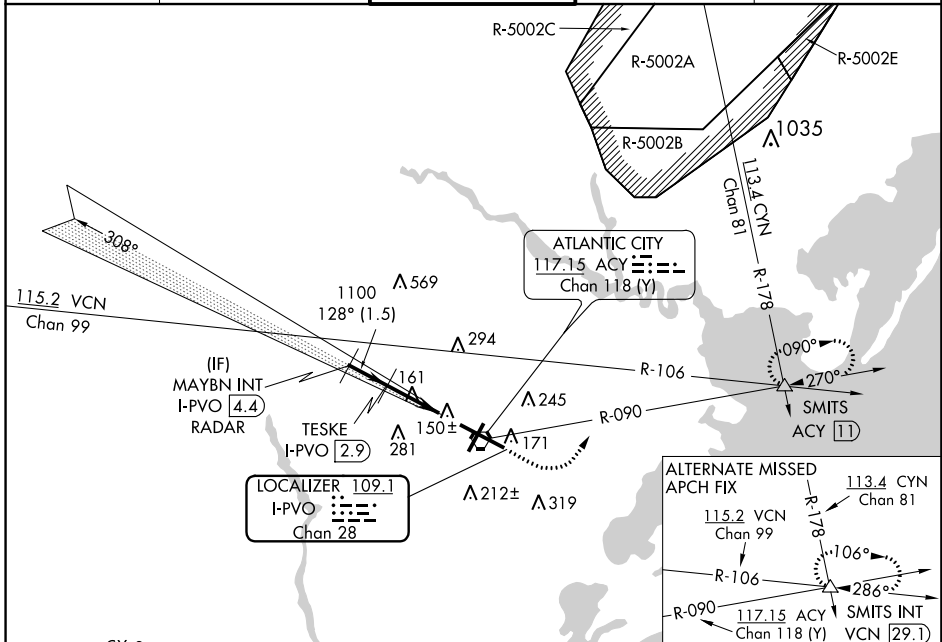
LOC/DME I-PVO 109.1 Chan 28	APP CRS 128°	Rwy ldg 10000 TDZE 75 Apt Elev 75
---	------------------------	--

COPTER ILS or LOC/DME RWY 13

ATLANTIC CITY INTL (ACY)

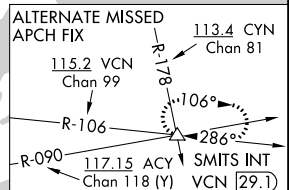
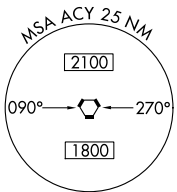
NA ASR	MALS 	MISSED APPROACH: Climb to 600 then climbing left turn to 2000 via ACY R-090 to SMITS INT/ACY 11 DME and hold.
-----------	----------	---

ATIS 125.725 316.15	ATLANTIC CITY APP CON 124.6 327.125	ATLANTIC CITY TOWER 120.3 239.0	GND CON 121.9 284.6	CLNC DEL 127.85 353.775
-------------------------------	---	---	-------------------------------	-----------------------------------

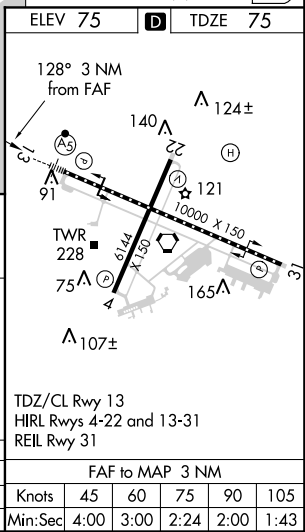
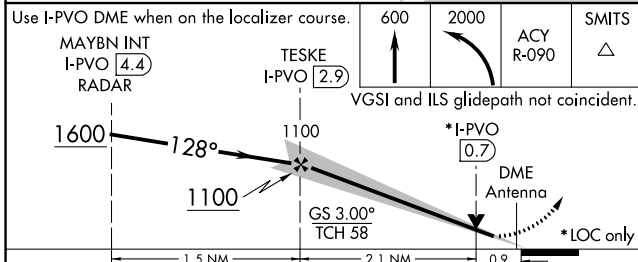


NE-2, 26 MAR 2020 to 23 APR 2020

NE-2, 26 MAR 2020 to 23 APR 2020



RADAR REQUIRED



CATEGORY	COPTER		FAF to MAP 3 NM					
H-ILS 13	275/12	200 (200-½)	Knots	45	60	75	90	105
H-LOC 13	420/24	345 (400-½)	Min:Sec	4:00	3:00	2:24	2:00	1:43