

ATLANTIC CITY, NEW JERSEY

# HI-VOR/DME or TACAN RWY 31

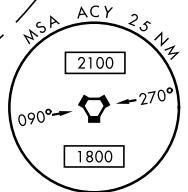
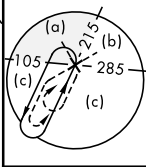
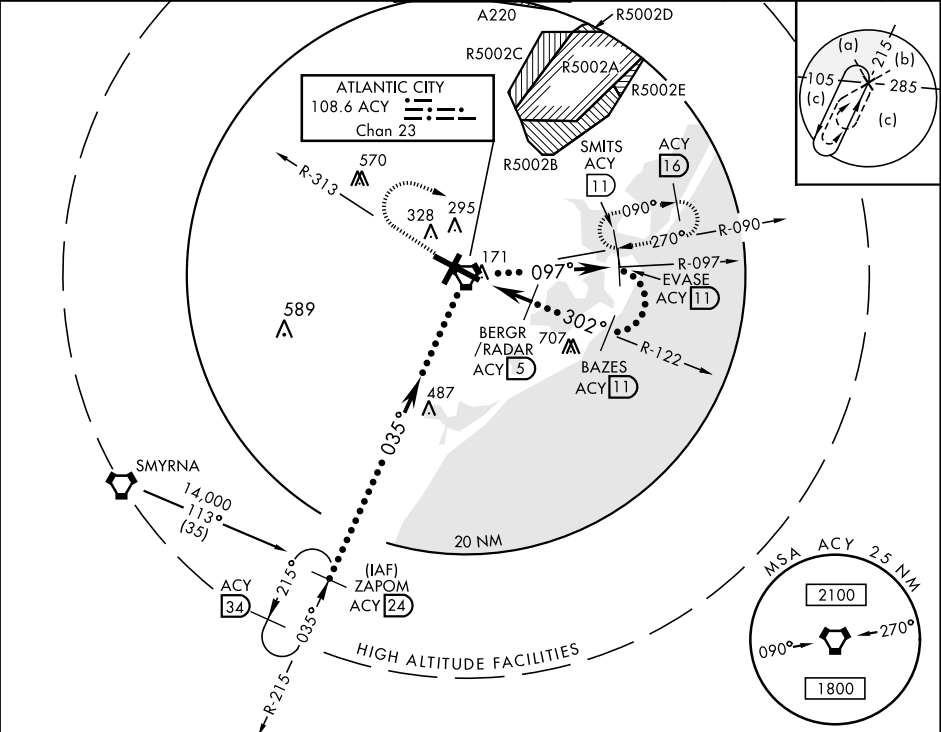
JAL-669 [USAF]

ATLANTIC CITY INTL (KACY)

VORTAC ACY <b>108.6</b> Chan <b>23</b>	APCH CRS <b>302°</b>	Rwy Idg <b>10,000</b> TDZE <b>64</b> Arpt Elev <b>75</b>
----------------------------------------------	-------------------------	----------------------------------------------------------------

MISSED APPROACH: Climbing right turn to 2000 via heading 120° and ACY R-090 to SMITS INT/ACY 11 DME and hold.

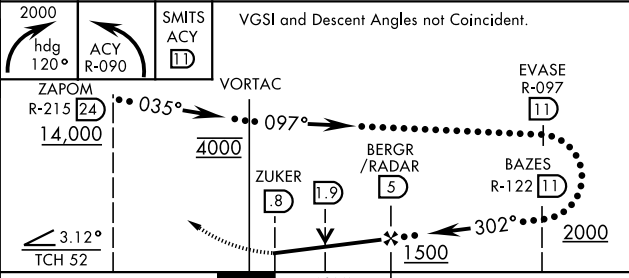
ATIS <b>125.725 316.15</b>	ATLANTIC CITY APP CON 130°-309° <b>124.6 327.125</b> 310°-129° <b>134.25 292.2</b>	ATLANTIC CITY TOWER <b>120.3 239.0</b>	GND CON <b>121.9 284.6</b>	CLNC DEL <b>127.85 353.775</b>	ASR
-------------------------------	------------------------------------------------------------------------------------------	-------------------------------------------	-------------------------------	-----------------------------------	-----



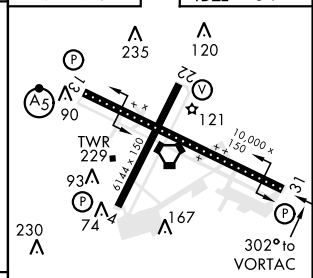
NE-2, 26 MAR 2020 to 23 APR 2020

NE-2, 26 MAR 2020 to 23 APR 2020

EMERG SAFE ALT 100 NM 4200



ELEV 75	TDZE 64
---------	---------



CATEGORY	C	D	E
S-31	480-1 1/4 417	(500-1 1/4)	480-1 1/2 417 (500-1 1/2)
CIRCLING	540-1 1/2 465 (500-1 1/2)	640-2 565 (600-2)	760-2 1/2 685 (700-2 1/2)

REIL Rwy 31  
HIRL Rwy 4-22 and 13-31  
TDZL/CL Rwy 13

ATLANTIC CITY, NEW JERSEY  
Amdt 4B 04FEB16

39°27'N-74°35'W

ATLANTIC CITY INTL (KACY)

# HI-VOR/DME or TACAN RWY 31