

WAAS CH 53631 W22A	APP CRS 218°	Rwy ldg TDZE 68 Apt Elev 75	6144
--	------------------------	---	-------------

RNAV (GPS) RWY 22

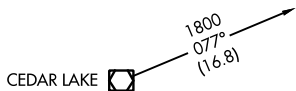
ATLANTIC CITY INTL (ACY)

ASR For uncompensated Baro-VNAV systems, LNAV/VNAV NA below -14°C (7°F) or above 54°C (130°F). Rwy 22 helicopter visibility reduction below ¾ SM NA. DME/DME RNP-0.3 NA.

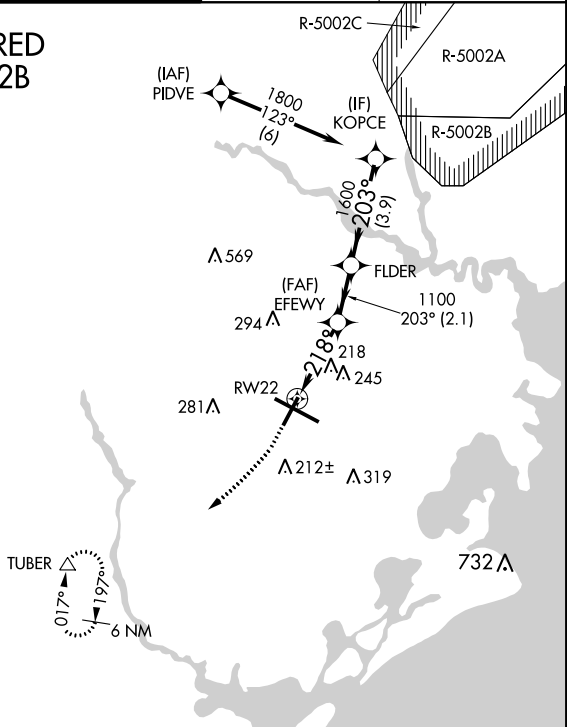
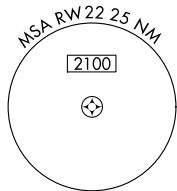
MISSED APPROACH: Climb to 600 then climbing right turn to 2000 direct TUBER and hold.

ATIS 125.725 316.15	ATLANTIC CITY APP CON 124.6 327.125	ATLANTIC CITY TOWER 120.3 239.0	GND CON 121.9 284.6	CLNC DEL 127.85 353.775
-------------------------------	---	---	-------------------------------	-----------------------------------

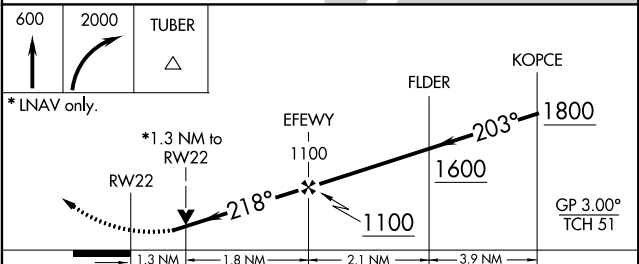
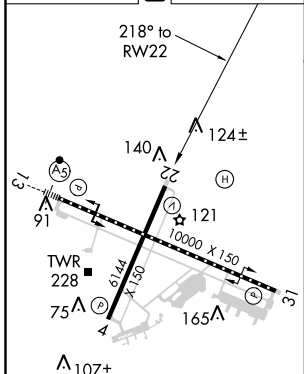
**RADAR REQUIRED
WHEN R-5002B
IS ACTIVE.**



Procedure NA for arrival on VCN VORTAC
airway radials 066 CW 160.



ELEV 75	D	TDZE 68
---------	----------	---------



CATEGORY	A	B	C	D	E
LPV DA	364-1		296 (300-1)		
LNAV/VNAV DA	356-7/8		288 (300-7/8)		
LNAV MDA	520-1 452 (500-1)		520-1 1/8 452 (500-1 1/8)		
CIRCLING	540-1 465 (500-1)		540-1 1/2 465 (500-1 1/2)	640-2 565 (600-2)	760-2 1/2 685 (700-2 1/2)

TDZ/CL Rwy 13
HIRL Rwy 4-22 and 13-31
REIL Rwy 31

NE-2, 26 MAR 2020 to 23 APR 2020

NE-2, 26 MAR 2020 to 23 APR 2020