


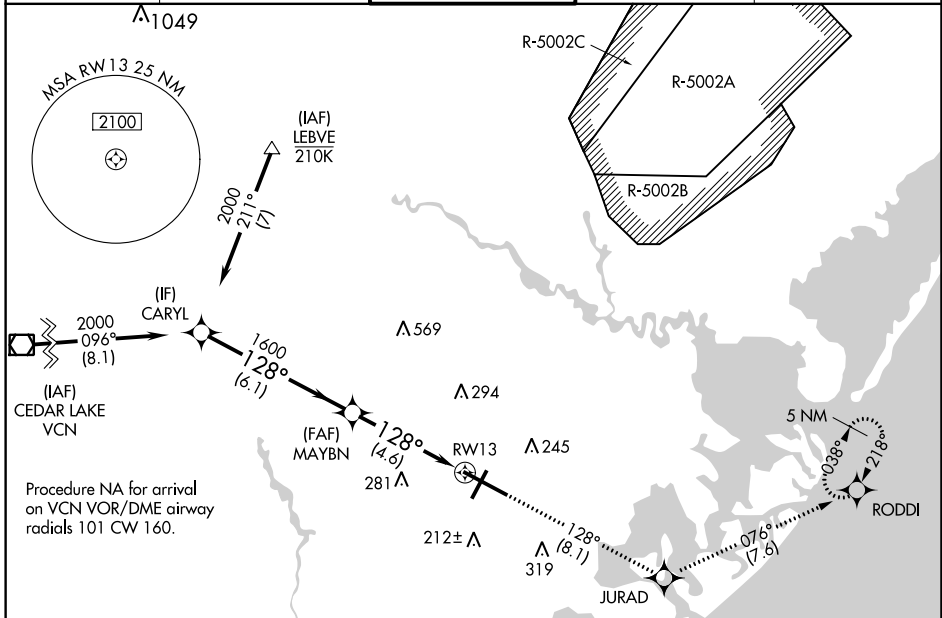
APP CRS 128°	Rwy Ldg 10000 TDZE 75 Apt Elev 75
------------------------	--

RNAV (RNP) Z RWY 13

ATLANTIC CITY INTL (ACY)

<p>NA For uncompensated Baro-VNAV systems, procedure NA below -13°C (9°F) or above 54°C (130°F). GPS required. ASR For inop ALS, increase RNP 0.30 all Cats visibility to RVR 6000.</p>	<p>MALSR</p> 	<p>MISSED APPROACH: Climb to 2000 on track 128° to JURAD and on track 076° to RODDI and hold.</p>
---	---	--

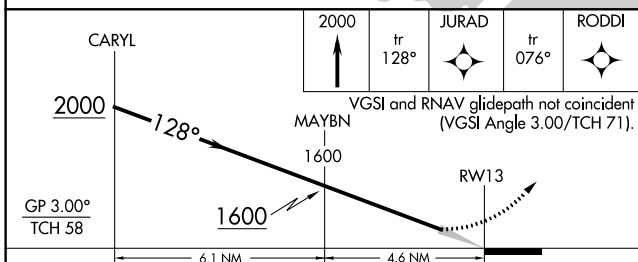
<p>ATIS 125.725 316.15</p>	<p>ATLANTIC CITY APP CON 124.6 327.125</p>	<p>ATLANTIC CITY TOWER 120.3 239.0</p>	<p>GND CON 121.9 284.6</p>	<p>CLNC DEL 127.85 353.775</p>
---------------------------------------	---	---	---------------------------------------	---



NE-2: 26 MAR 2020 to 23 APR 2020

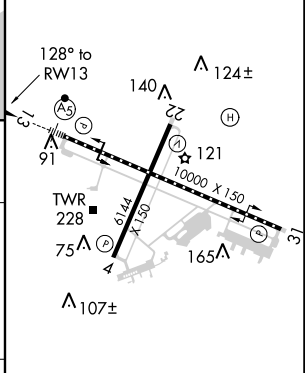
NE-2: 26 MAR 2020 to 23 APR 2020

ELEV 75	D	TDZE 75
---------	----------	---------



2000	↑	tr 128°	JURAD	↑	tr 076°	RODDI
------	---	---------	-------	---	---------	-------

VGSI and RNAV glidepath not coincident (VGSI Angle 3.00/TCH 71).



CATEGORY	A	B	C	D
RNP 0.30 DA		442/40	367 (400-¾)	

AUTHORIZATION REQUIRED

TDZ/CL Rwy 13
HIRL Rwy 4-22 and 13-31
REIL Rwy 31