

RNAV (RNP) Z RWY 31

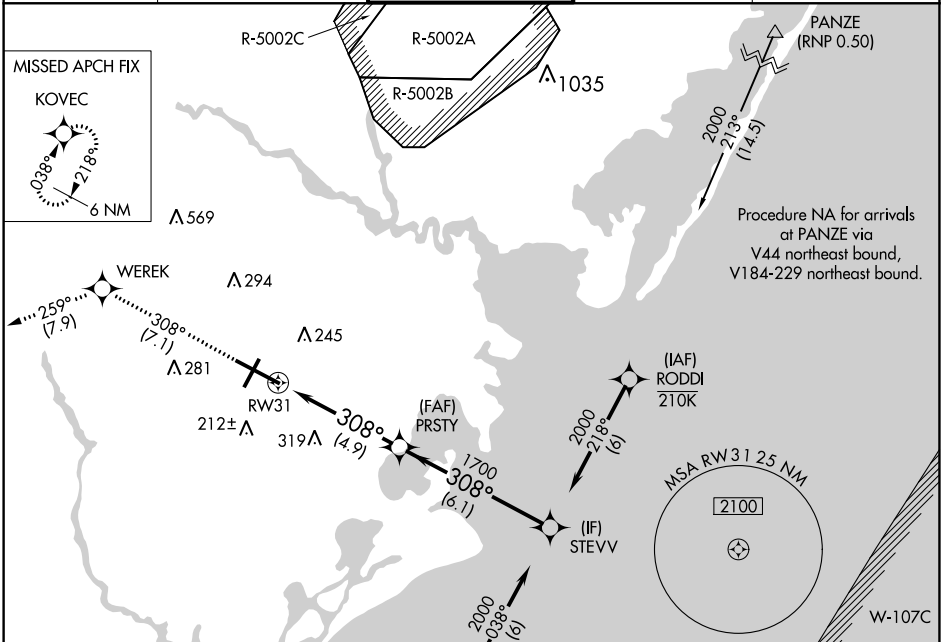
ATLANTIC CITY INTL (ACY)

APP CRS	Rwy ldg	10000
308°	TDZE	63
	Apt Elev	75

ASR GPS Required. Procedure NA at night.
For uncompensated Baro-VNAV systems, procedure NA below -13°C (8°F) or above 54°C (130°F).

MISSED APPROACH: Climb to 2000 on track 308° to WEREK on track 259° to KOVEK and hold.

ATIS	ATLANTIC CITY APP CON	ATLANTIC CITY TOWER	GND CON	CLNC DEL
125.725 316.15	124.6 327.125	120.3 239.0	121.9 284.6	127.85 353.775



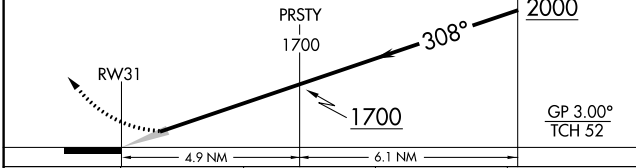
NE-2. 26 MAR 2020 to 23 APR 2020

NE-2. 26 MAR 2020 to 23 APR 2020

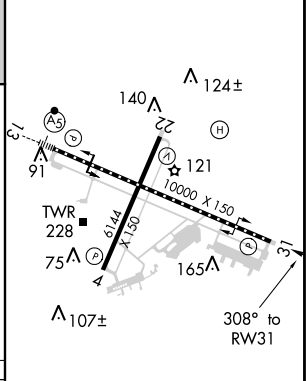
Procedure NA for arrivals on SIE VORTAC airway radials 333 CW 131.	SEA ISLE SIE (RNP 0.50)	(IAF) JENGA 210K	(IAF) RODDI 210K
--	-------------------------	------------------	------------------

2000	↑	tr 308°	WEREK	tr 259°	KOVEK
------	---	---------	-------	---------	-------

VGSI and RNAV glidepath not coincident (VGSI Angle 3.00/TCH 69).



ELEV 75	D	TDZE 63
---------	----------	---------



CATEGORY	A	B	C	D
RNP 0.30 DA		408/60	345 (400-1¼)	

TDZ/CL Rwy 13
HIRL Rwy 4-22 and 13-31
REIL Rwy 31

AUTHORIZATION REQUIRED