

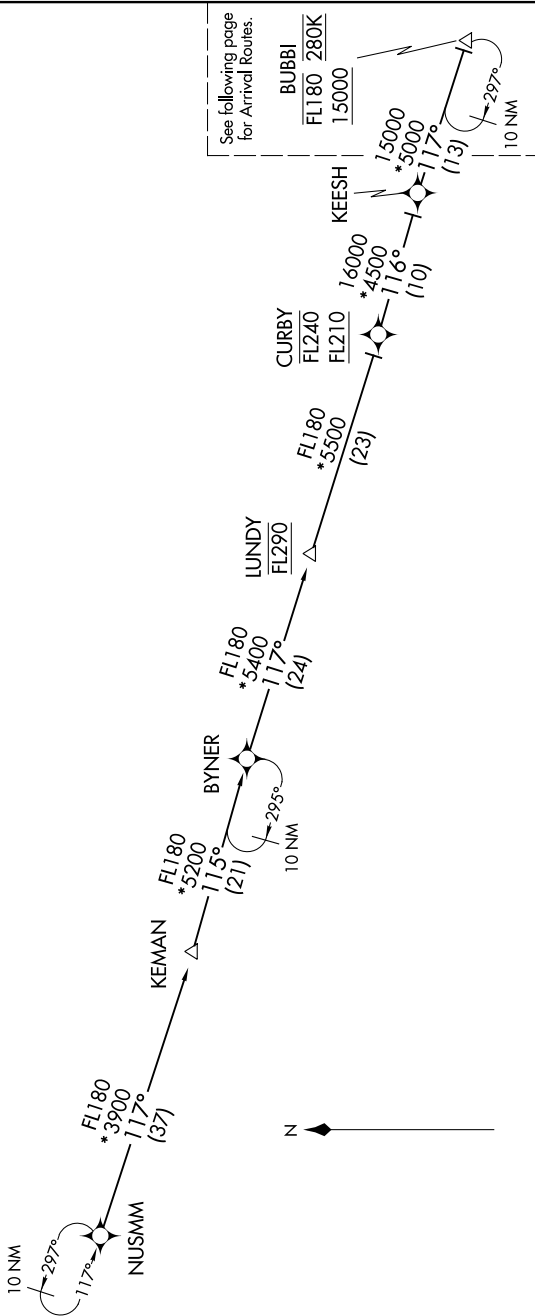
ANTHM THREE ARRIVAL (RNAV) Transition Routes

BALTIMORE, MARYLAND

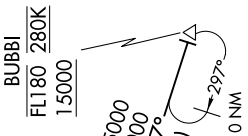
NE-3, 26 MAR 2020 to 23 APR 2020

BALTIMORE D-ATIS  
115.1  
POTOMAC APP CON  
133.85 254.25

- NOTE: RADAR required
- NOTE: RNAV 1.
- NOTE: DME/DME/IRU or GPS required.
- NOTE: Turbojet aircraft only.
- NOTE: Prohibited area (P56) 1.5 NM north of DCA avoid surface to 18000 MSL.
- NOTE: ARTCC will issue landing direction assignment (east or west). Potomac TRACON will issue runway assignments.



See following page for Arrival Routes.



KEESH TRANSITION (KEESH.ANTHM3)  
 KEMAN TRANSITION (KEMAN.ANTHM3)  
 NUSMM TRANSITION (NUSMM.ANTHM3)

(CONTINUED ON FOLLOWING PAGES)

NOTE: Chart not to scale.

NE-3, 26 MAR 2020 to 23 APR 2020

ANTHM THREE ARRIVAL (RNAV) Transition Routes

BALTIMORE, MARYLAND