

(CONLE3.CONLE) 17173

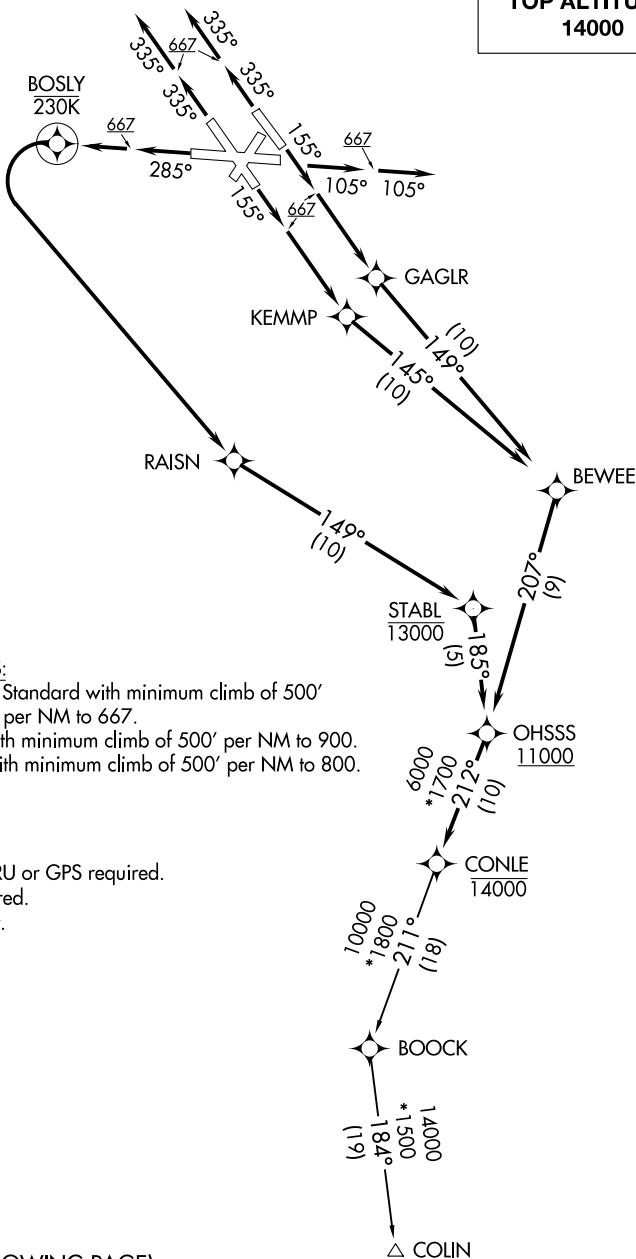
AL-804 (FAA)

BALTIMORE/
WASHINGTON INTL THURGOOD MARSHALL (BWI)
BALTIMORE, MARYLAND

CONLE THREE DEPARTURE (RNAV)

D-ATIS
 115.1 127.8
 CLNC DEL
 118.05
 CPDLC
 GND CON
 121.9
 BALTIMORE TOWER
 119.4 257.8
 POTOMAC DEP CON
 124.55 317.425

**TOP ALTITUDE:
14000**



TAKEOFF MINIMUMS:

Rwys 10, 15L/R, 28: Standard with minimum climb of 500' per NM to 667.

Rwy 33L: Standard with minimum climb of 500' per NM to 900.

Rwy 33R: Standard with minimum climb of 500' per NM to 800.

NOTE: RNAV 1

NOTE: DME/DME/IRU or GPS required.

NOTE: RADAR required.

NOTE: Turbojets only.

(NARRATIVE ON FOLLOWING PAGE)

(NOTES CONTINUED ON FOLLOWING PAGE)

NOTE: Chart not to scale.

CONLE THREE DEPARTURE (RNAV)

BALTIMORE/
WASHINGTON INTL THURGOOD MARSHALL (BWI)
BALTIMORE, MARYLAND

(CONLE3.CONLE) 04FEB16

NE-3, 26 MAR 2020 to 23 APR 2020

NE-3, 26 MAR 2020 to 23 APR 2020