

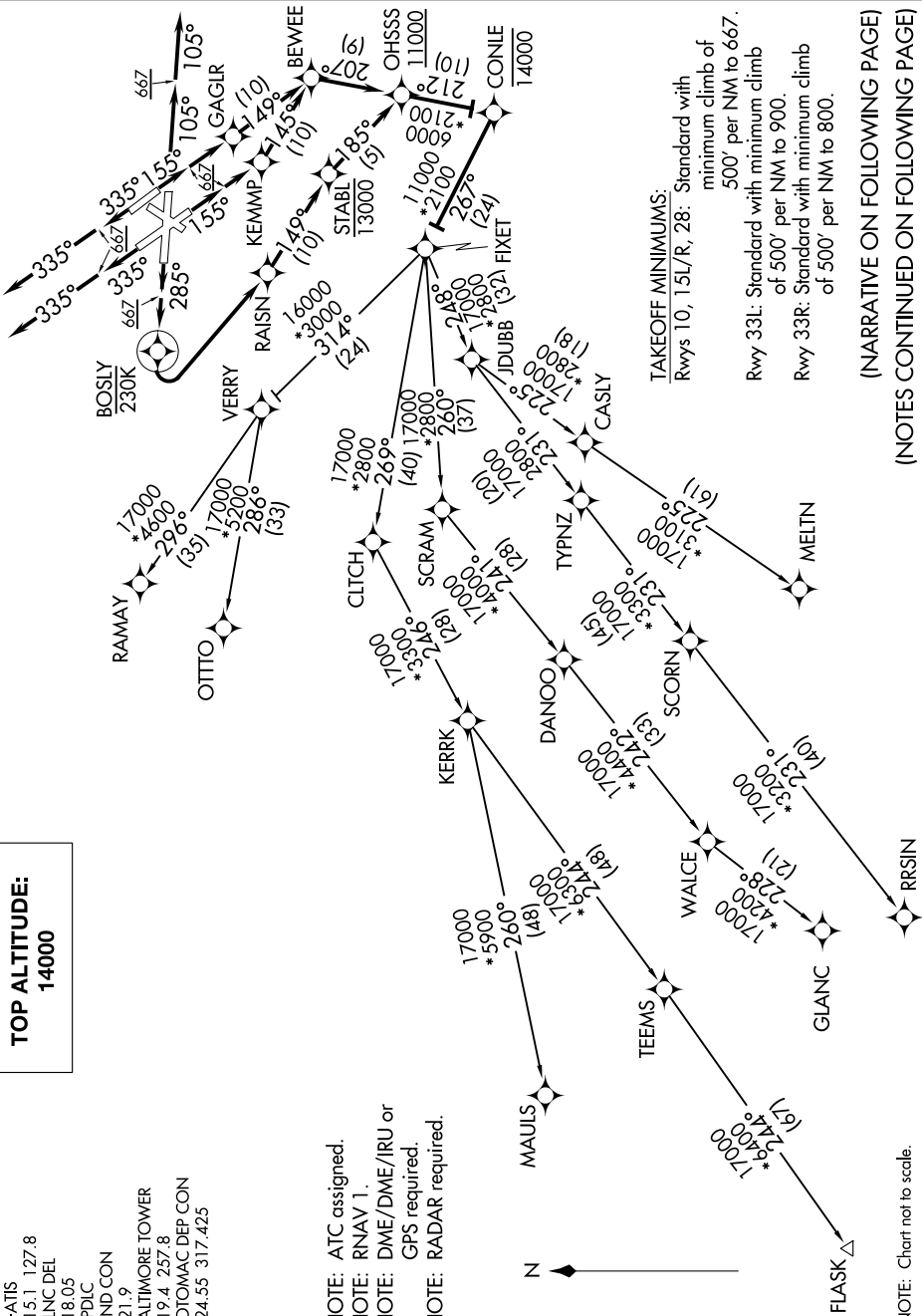
FIXET THREE DEPARTURE (RNAV)

NE-3, 26 MAR 2020 to 23 APR 2020

**TOP ALTITUDE:
14000**

D-ATIS 115.1 127.8
CLNC DEL 118.05
CPDIC
GND CON 121.9
BALTIMORE TOWER 119.4 257.8
POTOMAC DEP CON 124.55 317.425

NOTE: ATC assigned.
NOTE: RNAV 1.
NOTE: DME/DME/IRU or GPS required.
NOTE: RADAR required.



TAKEOFF MINIMUMS:

Rwys 10, 15L/R, 28: Standard with minimum climb of 500' per NM to 667.
Rwy 33L: Standard with minimum climb of 500' per NM to 900.
Rwy 33R: Standard with minimum climb of 500' per NM to 800.

(NARRATIVE ON FOLLOWING PAGE)
(NOTES CONTINUED ON FOLLOWING PAGE)

NOTE: Chart not to scale.

NE-3, 26 MAR 2020 to 23 APR 2020