

LOC I-RUX <b>111.7</b>	APP CRS <b>335°</b>	Rwy ldg TDZE <b>8301</b> <b>143</b>	Apt Elev <b>146</b>
---------------------------	------------------------	---	------------------------

**ILS RWY 33L (SA CAT I & II)**  
BALTIMORE/WASHINGTON INTL THURGOOD MARSHALL (BWI)

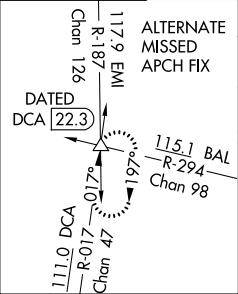
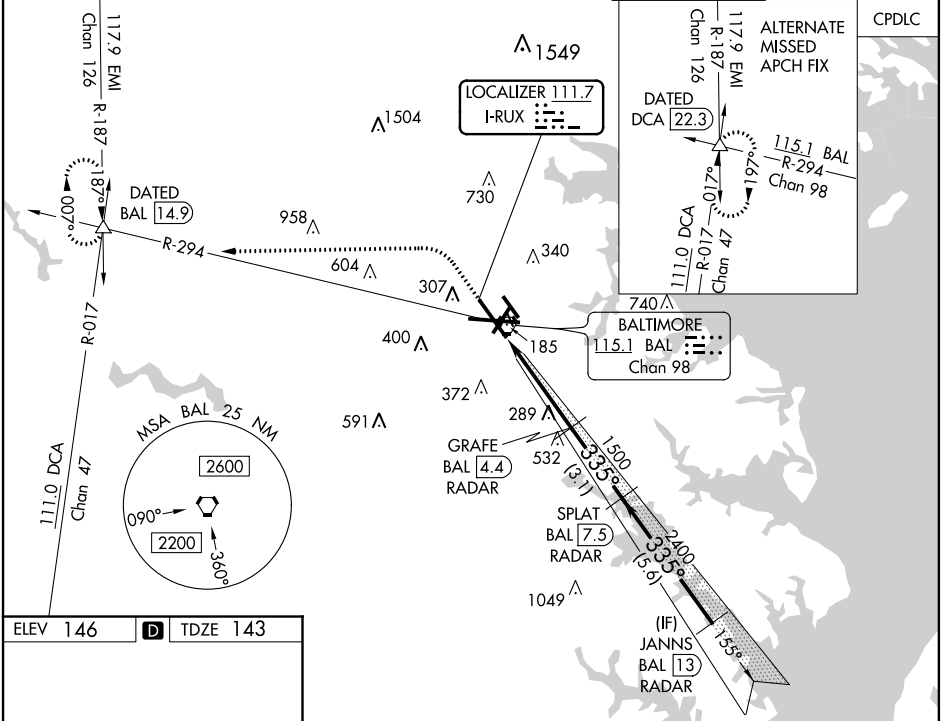
RADAR required for procedure entry.



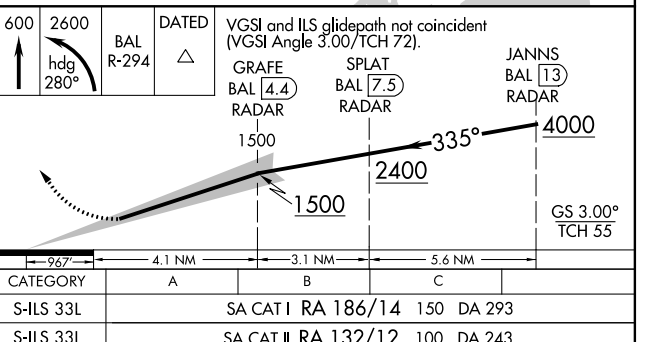
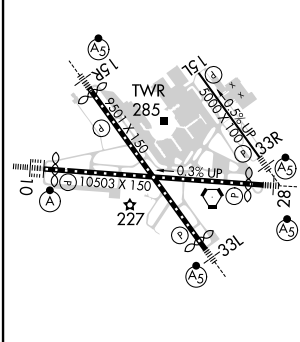
MISSED APPROACH: Climb to 600 then climbing left turn to 2600 on heading 280° and BAL R-294 to DATED INT/BAL 14.9 DME and hold.

**⚠** Simultaneous approach authorized with ILS or LOC Rwy 33R. DME from BAL VORTAC. SA CAT I: Requires specific OPSPEC, MSPEC, or LOA approval and use of HUD to DH. SA CAT II: Reduced lighting: Requires specific OPSPEC, MSPEC, or LOA approval and use of autoland or HUD to touchdown.

D-ATIS <b>115.1 127.8</b>	POTOMAC APP CON (020°-100°) <b>119.7 290.475</b> (131°-180°) (101°-130°) <b>124.55 317.425</b> (181°-019°) <b>128.7 307.9</b>	BALTIMORE TOWER <b>119.4 257.8</b>	GND CON <b>121.9</b>	CLNC DEL <b>118.05</b>
------------------------------	---	---------------------------------------	-------------------------	---------------------------



ELEV <b>146</b>	<b>D</b>	TDZE <b>143</b>
-----------------	----------	-----------------



CATEGORY	A	B	C
S-ILS 33L	SA CAT I RA 186/14	150	DA 293
S-ILS 33L	SA CAT II RA 132/12	100	DA 243

**SA CATEGORY I & II ILS - SPECIAL AIRCREW & AIRCRAFT CERTIFICATION REQUIRED**

TDZ/CL Rws 10 and 33L  
REIL Rws 15L and 33R  
HIRL all rws

NE-3, 26 MAR 2020 to 23 APR 2020

NE-3, 26 MAR 2020 to 23 APR 2020