


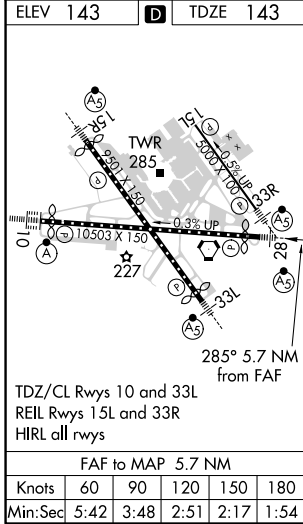
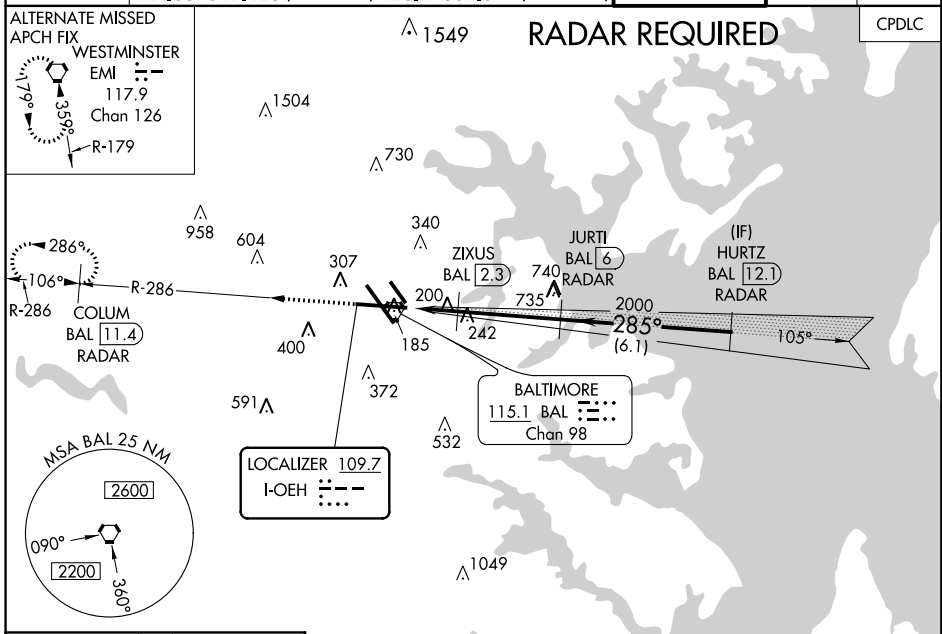
LOC I-OEH	APP CRS	Rwy Idg	9803
109.7	285°	TDZE	143
		Apt Elev	143

BALTIMORE/
WASHINGTON INTL THURGOOD MARSHALL (BWI)

ILS or LOC RWY 28

<p>▼ DME or radar required. For inoperative MALS, increase S-LOC 28 Cat C/D visibility to 1½ mile, and increase ZIXUS fix S-LOC 28 Cat C/D visibility to RVR 4500. **RVR 1800 authorized with the use of FD or AP or HUD to DA.</p>	<p>MALS</p> 	<p>MISSED APPROACH: Climb to 2500 on BAL VORTAC R-286 to COLUM/BAL 11.4 DME/RADAR and hold.</p>
--	---	---

D-ATIS	POTOMAC APP CON	BALTIMORE TOWER	GND CON	CLNC DEL
115.1 127.8	119.0 282.275 (020°-100°) 119.7 290.475 (131°-180°) 124.55 317.425 (101°-130°) 128.7 307.9 (181°-019°)	119.4 257.8	121.9	118.05



ELEV 143	TDZE 143	<p>2500</p> <p>COLUM BAL 11.4 RADAR</p> <p>JURTI BAL 6 RADAR</p> <p>HURTZ BAL 12.1 RADAR</p> <p>ZIXUS BAL 2.3</p> <p>BAL R-286</p> <p>*BAL 1.2</p> <p>*LOC only.</p> <p>0.9 NM 1.1 NM 3.7 NM 6.1 NM</p>				
		CATEGORY	A	B	C	D
		S-ILS 28	**343/24 200 (200-½)			
		S-LOC 28	620/24	477 (500-½)	620/50	477 (500-1)
		C CIRCLING	640-1 497 (500-1)	660-1 517 (600-1)	700-1½ 557 (600-1½)	860-2¼ 717 (800-2¼)
		ZIXUS FIX MINIMUMS (DME REQUIRED)				
		S-LOC 28	460/24 317 (400-½)			
		C CIRCLING	640-1 497 (500-1)	660-1 517 (600-1)	700-1½ 557 (600-1½)	860-2¼ 717 (800-2¼)

NE-3, 26 MAR 2020 to 23 APR 2020

NE-3, 26 MAR 2020 to 23 APR 2020