

LOC I-RUX 111.7	APP CRS 335°	Rwy ldg TDZE Apt Elev	8301 143 146
---------------------------	------------------------	-----------------------------	---

BALTIMORE/
WASHINGTON INTL THURGOOD MARSHALL (BWI)

ILS or LOC RWY 33L

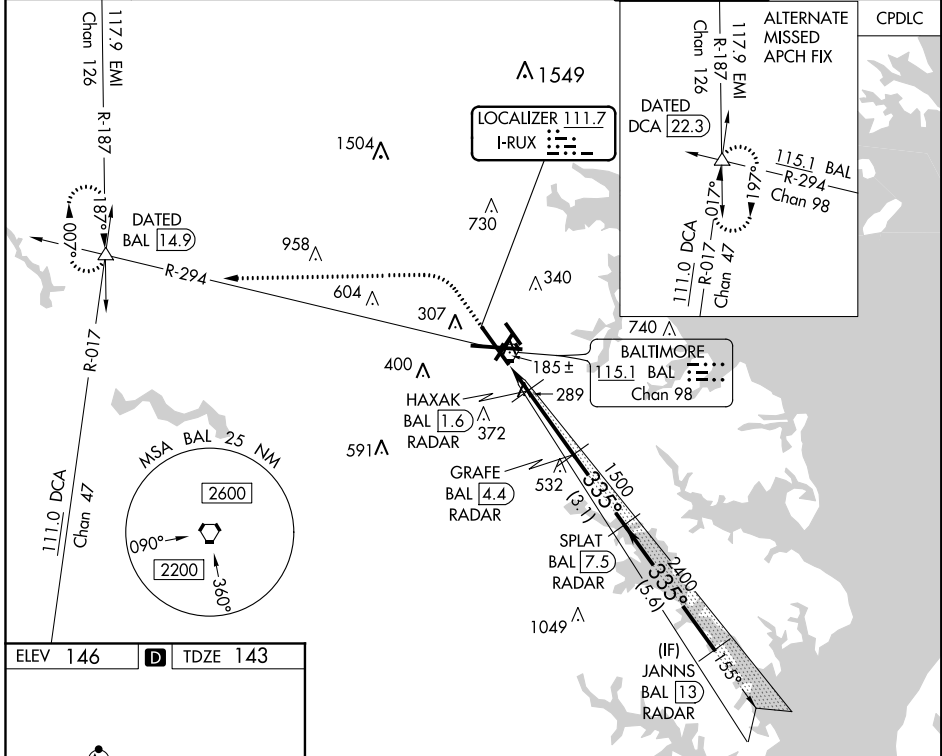
DME or RADAR required for LOC only. RADAR required for procedure entry.

Simultaneous approach authorized with ILS or LOC Rwy 33R. DME from BAL VORTAC.

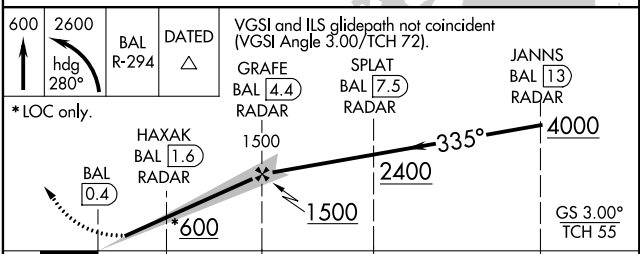
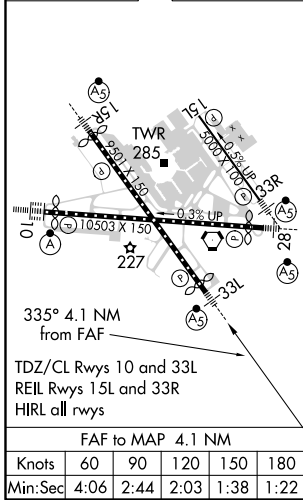
MALSR

MISSED APPROACH: Climb to 600 then climbing left turn to 2600 on heading 280° and BAL R-294 to DATED INT/BAL 1.4.9 DME and hold.

D-ATIS 115.1 127.8	POTOMAC APP CON 119.0 282.275 (020°-100°) 119.7 290.475 (131°-180°) 124.55 317.425 (101°-130°) 128.7 307.9 (181°-019°)	BALTIMORE TOWER 119.4 257.8	GND CON 121.9	CLNC DEL 118.05
------------------------------	---	---------------------------------------	-------------------------	---------------------------



ELEV 146	D	TDZE 143
----------	----------	----------



CATEGORY	A	B	C	D
S-ILS 33L	343/18		200 (200-½)	
S-LOC 33L	540/24	397 (400-½)	540/40	397 (400-¾)
C CIRCLING	640-1 494 (500-1)	660-1 514 (600-1)	700-1½ 554 (600-1½)	880-2¼ 734 (800-2¼)

NE-3, 26 MAR 2020 to 23 APR 2020

NE-3, 26 MAR 2020 to 23 APR 2020