
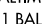




PALEO THREE DEPARTURE

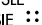
D-ATIS 115.1 127.8
CLNC DEL 118.05
GND CON 121.9
BALTIMORE TOWER
119.4 257.8
POTOMAC DEP CON
124.55
CPDLC

ARMEL
113.5 AML 
Chan 82

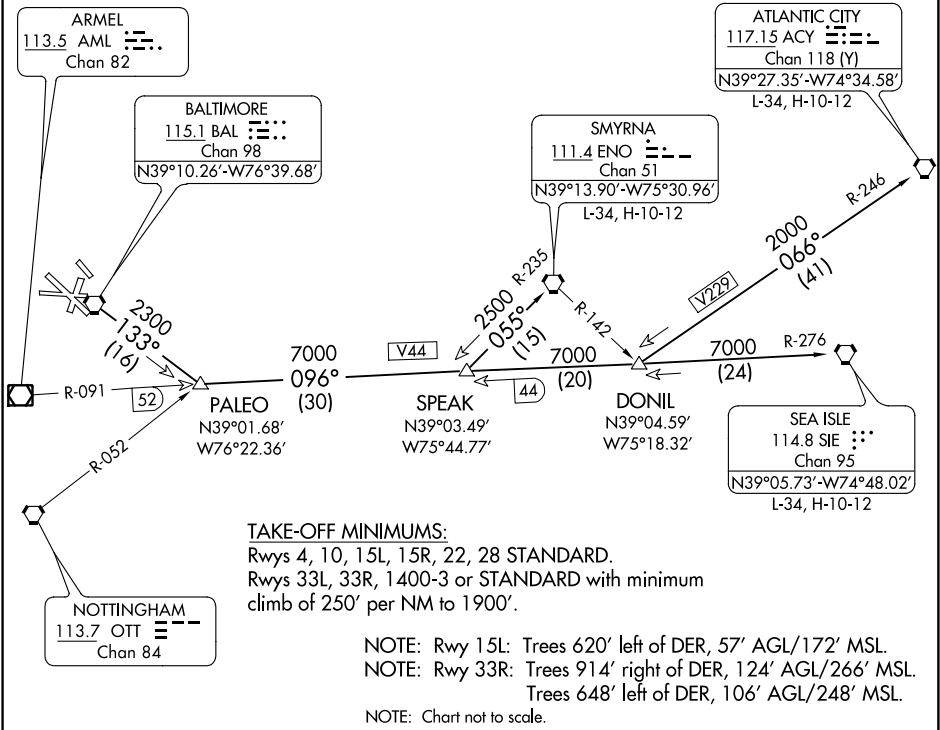
BALTIMORE
115.1 BAL 
Chan 98
N39°10.26'-W76°39.68'

SMYRNA
111.4 ENO 
Chan 51
N39°13.90'-W75°30.96'
L-34, H-10-12

ATLANTIC CITY
117.15 ACY 
Chan 118 (Y)
N39°27.35'-W74°34.58'
L-34, H-10-12

SEA ISLE
114.8 SIE 
Chan 95
N39°05.73'-W74°48.02'
L-34, H-10-12

NOTTINGHAM
113.7 OTT 
Chan 84



TAKE-OFF MINIMUMS:
 Rwy 4, 10, 15L, 15R, 22, 28 STANDARD.
 Rwy 33L, 33R, 1400-3 or STANDARD with minimum
 climb of 250' per NM to 1900'.

NOTE: Rwy 15L: Trees 620' left of DER, 57' AGL/172' MSL.
 NOTE: Rwy 33R: Trees 914' right of DER, 124' AGL/266' MSL.
 Trees 648' left of DER, 106' AGL/248' MSL.
 NOTE: Chart not to scale.

DEPARTURE ROUTE DESCRIPTION

TAKE-OFF RWY 28:
JETS: Fly runway heading until 3 DME, then turn left heading 150°. Thence . . .
PROPS: Fly runway heading. Thence . . .
TAKE-OFF ALL OTHER RUNWAYS: Fly runway heading. Thence . . .
 For vectors to transition or assigned route, expect clearance to filed altitude ten minutes after departure.
ATLANTIC CITY TRANSITION (PALEO3.ACY): From over BAL VORTAC via BAL R-133 to PALEO INT, then via SIE VORTAC R-276 to DONIL INT, then via ACY VORTAC R-246 to ACY VORTAC.
SEA ISLE TRANSITION (PALEO3.SIE): From over BAL VORTAC via BAL R-133 to PALEO INT, then via SIE VORTAC R-276 to SIE VORTAC.
SMYRNA TRANSITION (PALEO3.ENO): From over BAL VORTAC via BAL R-133 to PALEO INT, then via SIE VORTAC R-276 to SPEAK INT, then via ENO VORTAC R-235 to ENO VORTAC.

NE-3, 26 MAR 2020 to 23 APR 2020

NE-3, 26 MAR 2020 to 23 APR 2020