

APP CRS **155°**
 Rwy Idg **8301**
 TDZE **138**
 Apt Elev **143**

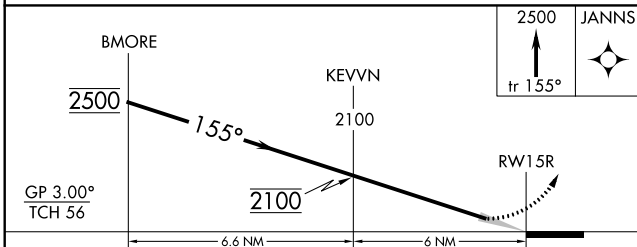
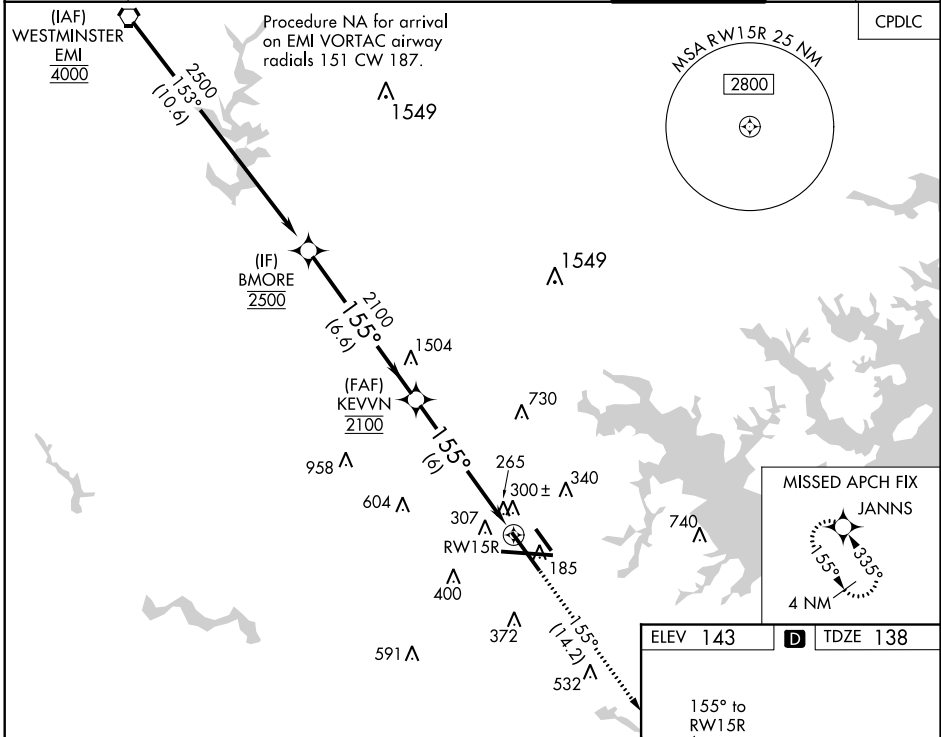
RNAV (RNP) Z RWY 15R
 BALTIMORE/WASHINGTON INTL THURGOOD MARSHALL (BWI)

▼ For uncompensated Baro-VNAV systems, procedure NA below -12°C (11°F) or above 54°C (130°F). For inop MALSR, increase RNP 0.11 DA all Cats visibility to 1¼ mile, and RNP 0.30 DA all Cats visibility to 1½ mile. GPS Required.



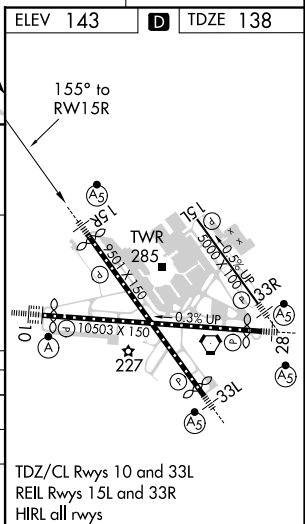
MISSED APPROACH: Climb to 2500 on track 155° to JANN3 and hold.

D-ATIS 115.1 127.8	POTOMAC APP CON 119.0 282.275 (020°-100°) 119.7 290.475 (131°-180°) 124.55 317.425 (101°-130°) 128.7 307.9 (181°-019°)	BALTIMORE TOWER 119.4 257.8	GND CON 121.9	CLNC DEL 118.05
------------------------------	---	---------------------------------------	-------------------------	---------------------------



CATEGORY	A	B	C	D
RNP 0.11 DA		513/38	375 (400-¾)	
RNP 0.30 DA		588/52	450 (500-1)	

AUTHORIZATION REQUIRED



TDZ/CL Rwy 10 and 33L
 REIL Rwy 15L and 33R
 HIRL all rwy

NE-3, 26 MAR 2020 to 23 APR 2020

NE-3, 26 MAR 2020 to 23 APR 2020