

APP CRS **285°**
 Rwy ldg **9803**
 TDZE **143**
 Apt Elev **143**

RNAV (RNP) Z RWY 28

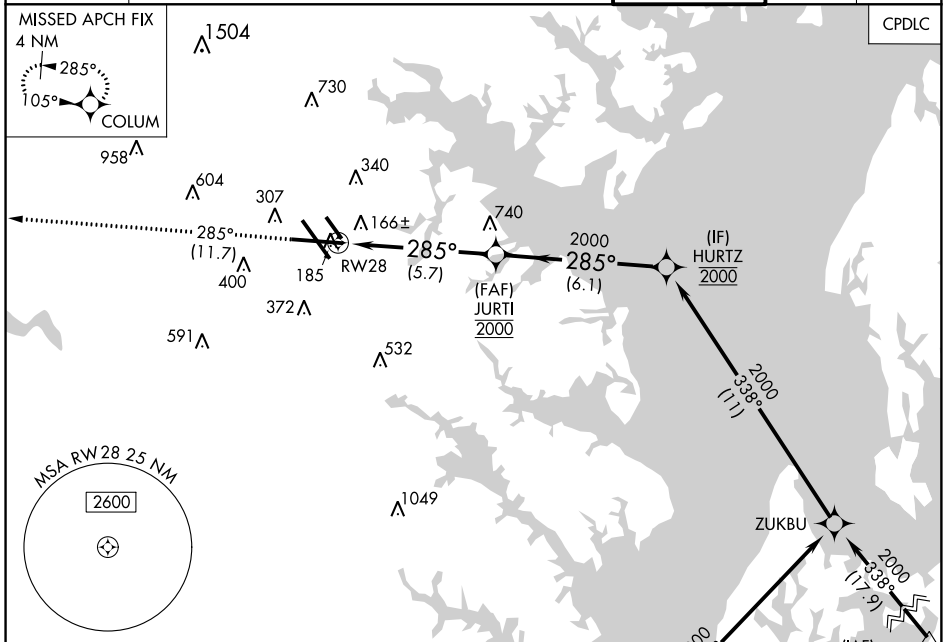
BALTIMORE/WASHINGTON INTL THURGOOD MARSHALL (BWI)

▼ For uncompensated Baro-VNAV systems, procedure NA below -12°C (11°F) or above 54°C (130°F). GPS Required. For inoperative MALSR, increase RNP 0.30 all Cats visibility to 1¼.



MISSED APPROACH: Climb to 2500 on track 285° to COLUM and hold.

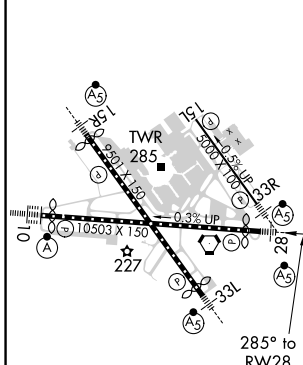
D-ATIS 115.1 127.8	POTOMAC APP CON (020°-100°) 119.7 290.475 (131°-180°) (101°-130°) 128.7 307.9 (181°-019°)	BALTIMORE TOWER 119.4 257.8	GND CON 121.9	CLNC DEL 118.05
------------------------------	---	---------------------------------------	-------------------------	---------------------------



NE-3, 26 MAR 2020 to 23 APR 2020

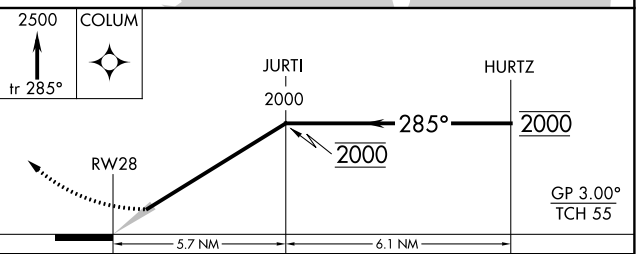
NE-3, 26 MAR 2020 to 23 APR 2020

ELEV 143 **D** TDZE 143



Procedure NA for arrivals at RAVNN on V379 westbound.

Procedure NA for arrivals at BILIT on V308 eastbound.



CATEGORY	A	B	C	D
RNP 0.30 DA	521 / 45 378 (400-%)			

AUTHORIZATION REQUIRED