

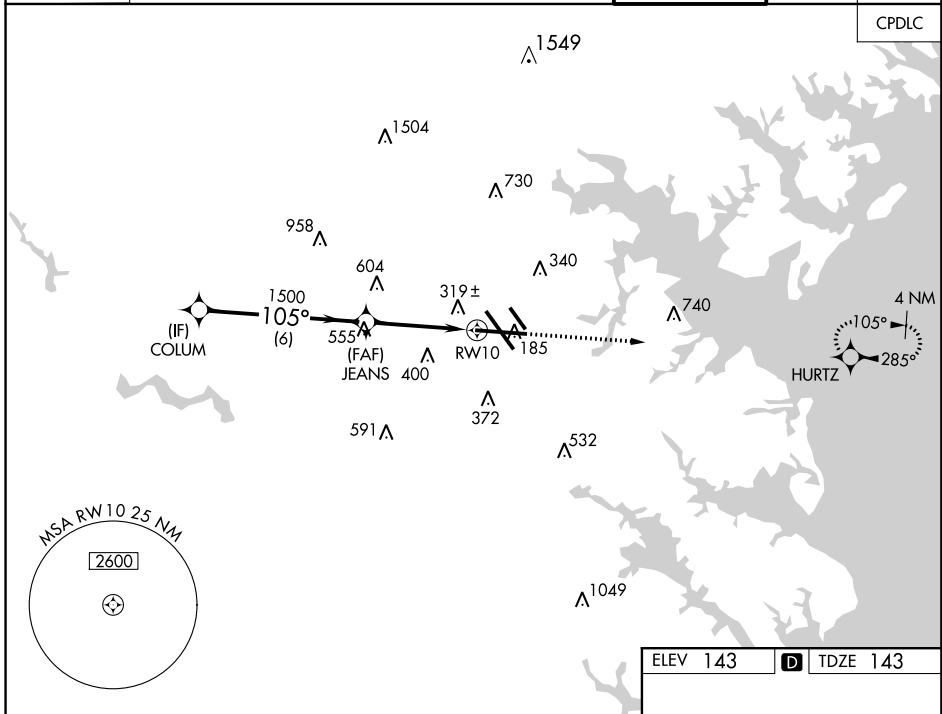
WAAS CH <b>53707</b> <b>W10A</b>	APP CRS <b>105°</b>	Rwy Idg TDZE <b>143</b> Apt Elev <b>143</b>	<b>9953</b>
--	------------------------	---	-------------

# RNAV (GPS) Y RWY 10

BALTIMORE/WASHINGTON INTL THURGOOD MARSHALL (BWI)

RNP APCH.	ALSIF-2	MISSED APPROACH: Climb to 2500 direct HURTZ and hold.
For uncompensated Baro-VNAV systems, LNAV/VNAV NA below -12°C (11°F) or above 54°C (130°F).		

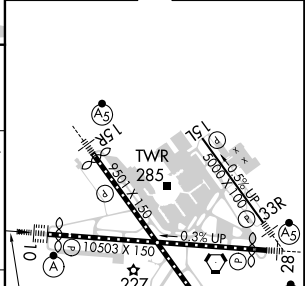
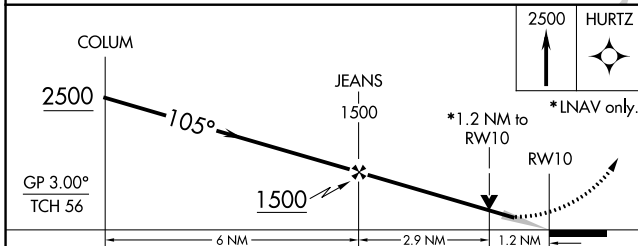
D-ATIS <b>115.1 127.8</b>	POTOMAC APP CON (020°-100°) <b>119.7 290.475</b> (131°-180°) (101°-130°) <b>124.55 317.425</b> (181°-019°)	BALTIMORE TOWER <b>119.4 257.8</b>	GND CON <b>121.9</b>	CLNC DEL <b>118.05</b>
------------------------------	--	---------------------------------------	-------------------------	---------------------------



NE-3, 26 MAR 2020 to 23 APR 2020

NE-3, 26 MAR 2020 to 23 APR 2020

ELEV 143	<b>D</b> TDZE 143
----------	-------------------



CATEGORY	A	B	C	D
LPV DA	343/18		200 (200-½)	
LNAV/VNAV DA	586/50		443 (500-1)	
LNAV MDA	580/24 437 (500-½)		580/40 437 (500-¾)	
<b>C</b> CIRCLING	640-1 497 (500-1)	660-1 517 (600-1)	700-1½ 557 (600-1½)	860-2¼ 717 (800-2¼)

105° to RWY 10

TDZ/CL Rwy 10 and 33L  
REIL Rwy 15L and 33R  
HIRL all rwy

# RNAV (GPS) Y RWY 10