

WAAS CH 66007 W15B	APP CRS 155°	Rwy Idg TDZE 138 Apt Elev 143	8301
--	------------------------	---	-------------

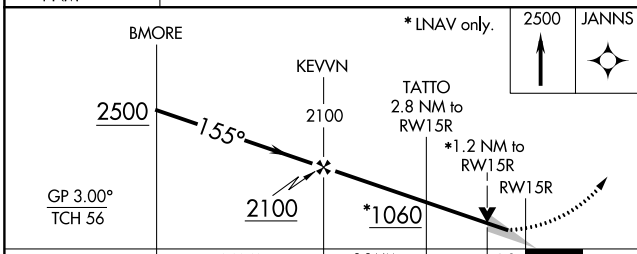
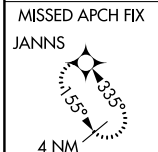
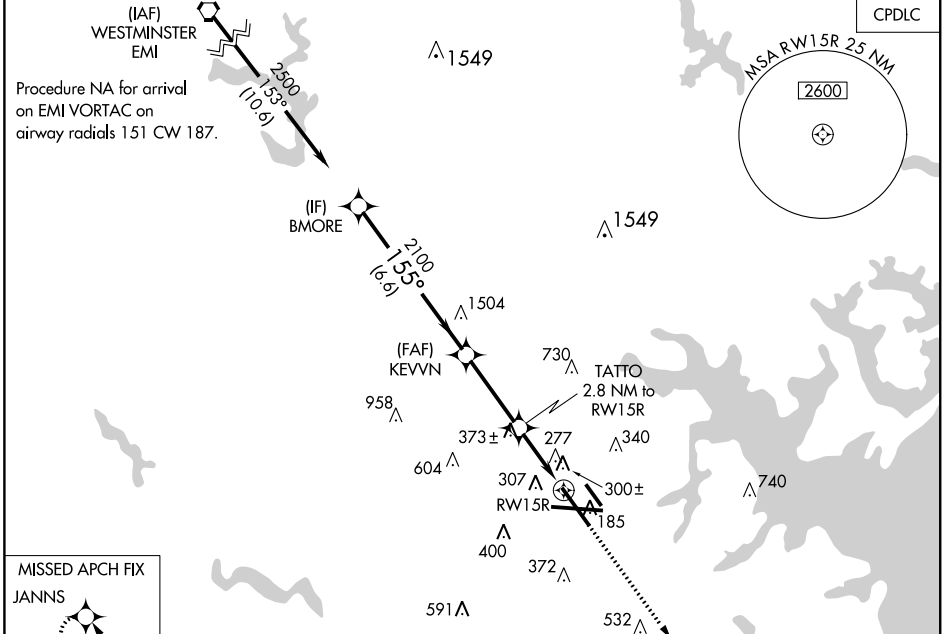
RNAV (GPS) Y RWY 15R

BALTIMORE/WASHINGTON INTL THURGOOD MARSHALL (BWI)

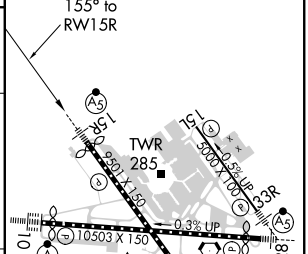
⚠ For uncompensated Baro-VNAV systems, LNAV/VNAV NA below -12°C (11°F) or above 54°C (130°F). For inop MALSR, increase LNAV/VNAV all Cats visibility to 1½. DME/DME RNP-0.3 NA.
 **RVR 1800 authorized with use of FD or AP or HUD to DA.

MALSR 	MISSED APPROACH: Climb to 2500 direct JANN5 and hold.
-----------	---

D-ATIS 115.1 127.8	POTOMAC APP CON (020°-100°) 119.0 282.275 (101°-130°) 124.55 317.425	(131°-180°) 119.7 290.475 (181°-019°) 128.7 307.9	BALTIMORE TOWER 119.4 257.8	GND CON 121.9	CLNC DEL 118.05
------------------------------	--	--	---------------------------------------	-------------------------	---------------------------



ELEV 143	D TDZE 138
----------	-------------------



CATEGORY	A	B	C	D
LPV DA	**338/24		200 (200-½)	
LNAV/VNAV DA	557/46		419 (500-1)	
LNAV MDA	560/24	422 (500-½)	560/40	422 (500-¾)
C CIRCLING	640-1 497 (500-1)	660-1 517 (600-1)	700-1½ 557 (600-1½)	880-2¼ 737 (800-2¼)

TDZ/CL Rwy 10 and 33L
 REIL Rwy 15L and 33R
 HIRL all rwy

RNAV (GPS) Y RWY 15R

NE-3, 26 MAR 2020 to 23 APR 2020

NE-3, 26 MAR 2020 to 23 APR 2020