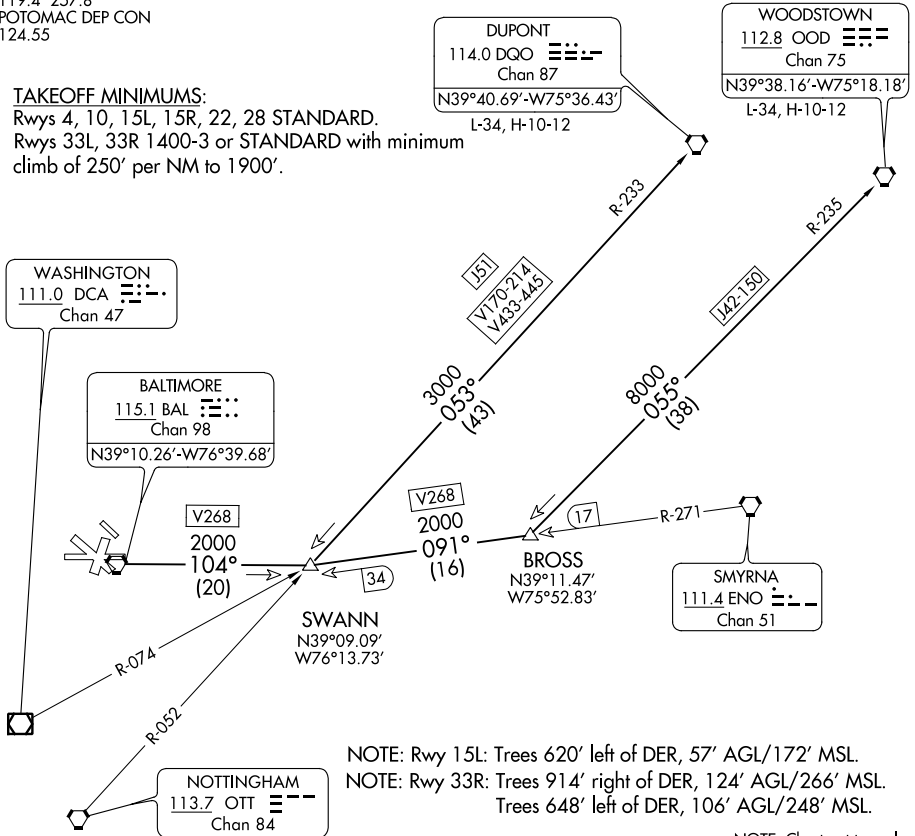


(SWANN3.SWANN) 20086  
**SWANN THREE DEPARTURE**

BALTIMORE/  
 WASHINGTON INTL THURGOOD MARSHALL (BWI)  
 AL-804 (FAA) BALTIMORE, MARYLAND

D-ATIS 115.1 127.8  
 CLNC DEL 118.05  
 CPDLC  
 GND CON 121.9  
 BALTIMORE TOWER  
 119.4 257.8  
 POTOMAC DEP CON  
 124.55

**TAKEOFF MINIMUMS:**  
 Rwys 4, 10, 15L, 15R, 22, 28 STANDARD.  
 Rwys 33L, 33R 1400-3 or STANDARD with minimum  
 climb of 250' per NM to 1900'.



NOTE: Rwy 15L: Trees 620' left of DER, 57' AGL/172' MSL.  
 NOTE: Rwy 33R: Trees 914' right of DER, 124' AGL/266' MSL.  
 Trees 648' left of DER, 106' AGL/248' MSL.

NOTE: Chart not to scale.



**DEPARTURE ROUTE DESCRIPTION**

**TAKEOFF RWY 28:**

**JETS:** Fly runway heading until 3 DME, then turn left heading 150° Thence....

**PROPS:** Fly runway heading. Thence....

**TAKEOFF ALL OTHER RUNWAYS:** Fly runway heading. Thence....

....For vectors to transition or assigned route, expect clearance to filed altitude ten minutes after departure.

**DUPONT TRANSITION (SWANN3.DQO):** From over BAL VORTAC via BAL R-104 to SWANN INT, then via DQO VORTAC R-233 to DQO VORTAC.

**WOODSTOWN TRANSITION (SWANN3.OOD):** From over BAL VORTAC via BAL R-104 to SWANN INT, then via ENO VORTAC R-271 to BROSS INT, then via OOD VORTAC R-235 to OOD VORTAC.