

CLTCH TWO DEPARTURE (RNAV)

NE-3, 26 MAR 2020 to 23 APR 2020

- D-ATIS 134.85
- CINC DEL 135.7 317.8
- CPDLC 121.9 317.8 (EAST)
- GND.CON 121.625 348.6 (WEST)
- DULLES TOWER 120.1 317.8 [Rwy 1R/19L]
- 120.25 348.6 (Rwy 1C/19C)
- 134.425 348.6 (Rwys 1L/19R, 12/30)
- POTOMAC DEP CON 126.65 350.2

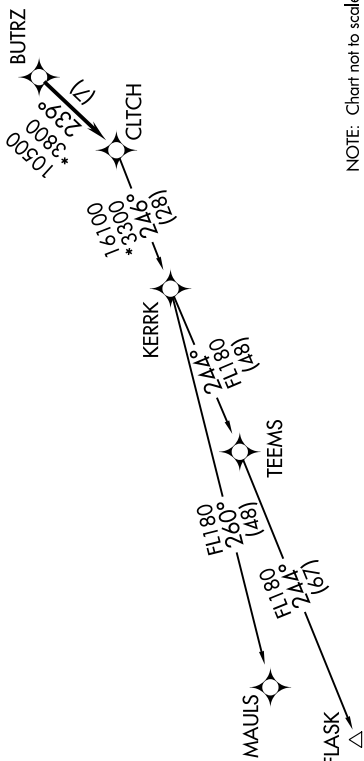
TAKEOFF MINIMUMS:

Rwys 1L/C/R, 19L/C/R, 30:
Standard with minimum climb
of 500' per NM to 820.



TOP ALTITUDE:
3000

NOTE: RNAV 1.
NOTE: RADAR required.
NOTE: DME/DME/IRU or GPS required.



NOTE: Chart not to scale.

DEPARTURE ROUTE DESCRIPTION

TAKEOFF RWY 1L, 1C, 1R, 19C, 19L, 19R, 30:
Climb on heading assigned by ATC, expect RADAR vectors to BUTRZ, then on track 239° to CLTCH, thence. . . .

. . . . on assigned transition. Maintain 3000. Expect clearance to filed altitude within ten (10) minutes after departure.

FLASK TRANSITION (CLTCH2.FLASK)
MAULS TRANSITION (CLTCH2.MAULS)

CLTCH TWO DEPARTURE (RNAV)

(CLTCH2.CLTCH) 29MAR18

NE-3, 26 MAR 2020 to 23 APR 2020