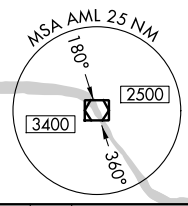
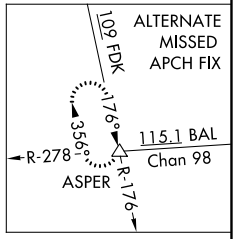
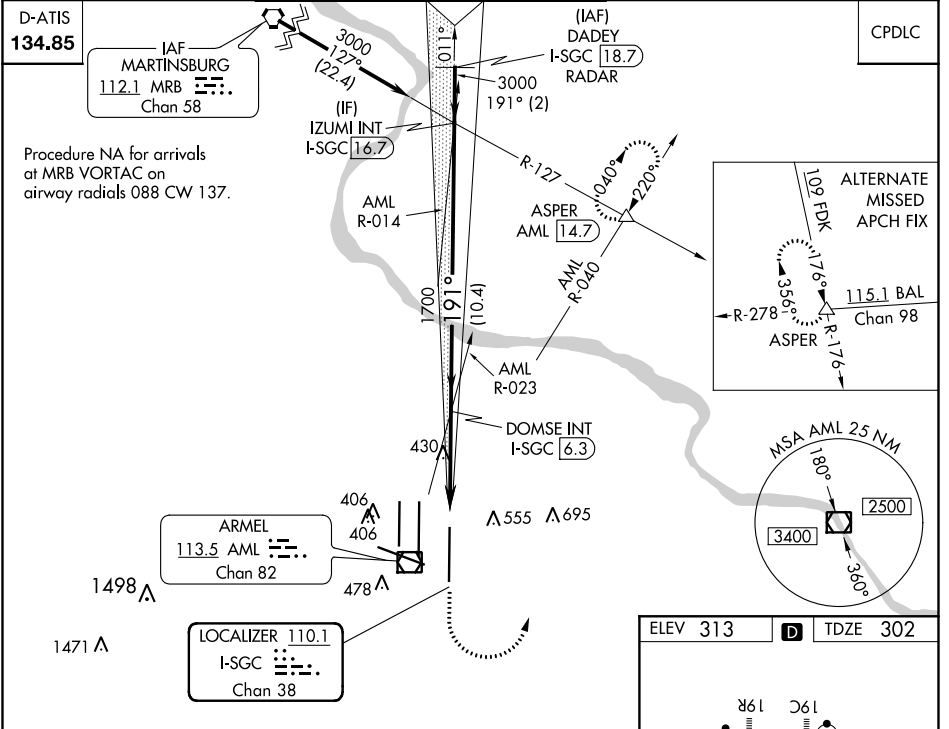


LOC/DME I-SGC 110.1 Chan 38	APP CRS 191°	Rwy Idg 11500 TDZE 302 Apt Elev 313
-------------------------------------------------	------------------------	----------------------------------------------------------------

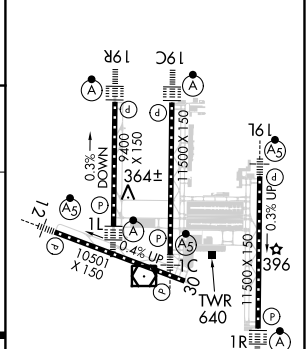
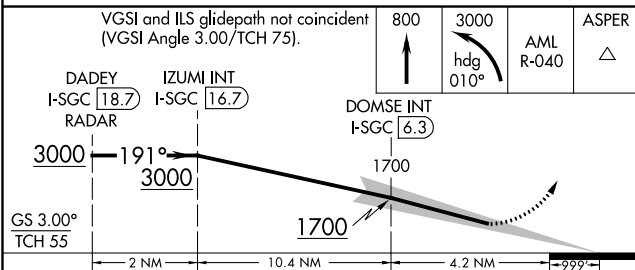
ILS RWY 19L (SA CAT II)

WASHINGTON DULLES INTL (IAD)

		MISSED APPROACH: Climb to 800 then climbing left turn to 3000 on heading 010° and AML VOR/DME R-040 to ASPER INT/AML 14.7 DME and hold.	
		POTOMAC APP CON 120.45 306.925 (241°-330°) 128.525 306.925 (091°-240°) 126.1 338.25 (331°-090°)	DULLES TOWER 120.1 317.8 (Rwy 1R/19L) 120.25 348.6 (Rwy 1C/19C) 134.425 348.6 (Rwys 1L/19R and 12/30)



ELEV 313	D	TDZE 302
----------	----------	----------



CATEGORY	A	B	C	D
S-ILS 19L	RA 102/12 100 DA 402			

CATEGORY II ILS - SPECIAL AIRCREW & AIRCRAFT CERTIFICATION REQUIRED

TDZ/CL Rwys 1C, 1L, 1R, 12, 19C and 19R
 REIL Rwy 30
 HIRL all Rwys

NE-3, 26 MAR 2020 to 23 APR 2020

NE-3, 26 MAR 2020 to 23 APR 2020