

| | | |
|--|------------------------|--|
| LOC/DME I-LSU 110.75 Chan 44 (Y) | APP CRS 191° | Rwy Idg TDZE Apt Elev 9400 278 312 |
|--|------------------------|--|

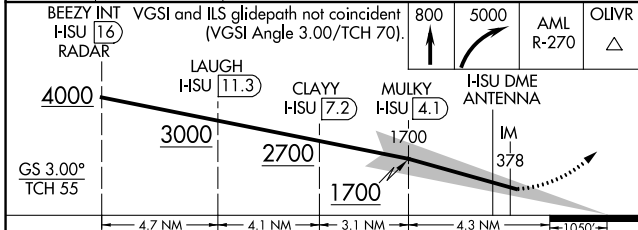
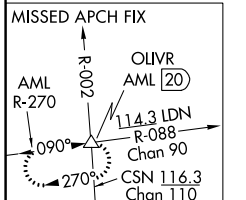
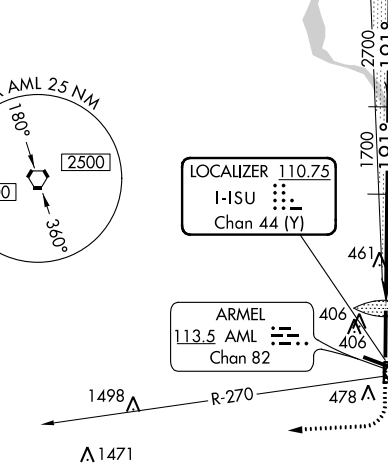
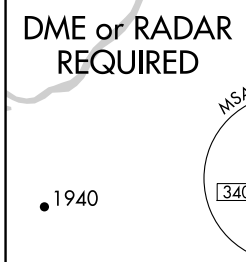
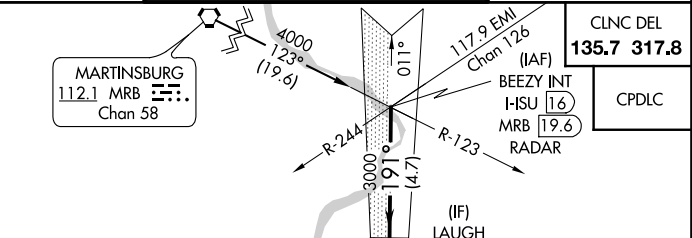
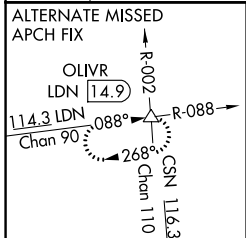
ILS RWY 19R (CAT II & III)

WASHINGTON DULLES INTL (IAD)

Simultaneous approach authorized with ILS or LOC/DME
Rwy 19C, ILS Rwy 19C (Cat II), ILS Rwy 19C (Cat III), Rwy 19L.

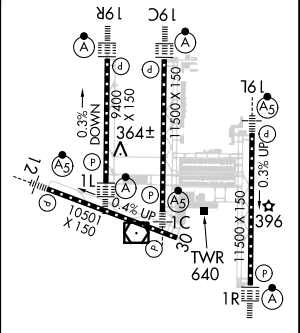
MISSED APPROACH: Climb to 800 then climbing right turn to 5000 via AML VOR/DME R-270 to OLIVR INT/AML 20 DME and hold, continue climb-in-hold to 5000.

| | | | |
|-------------------------|---|---|---|
| D-ATIS 134.85 | POTOMAC APP CON 120.45 306.925 (241°-330°) 128.525 306.925 (091°-240°) 126.1 338.25 (331°-090°) | DULLES TOWER 120.1 317.8 (Rwy 1R/19L) 120.25 348.6 (Rwy 1C/19C) 134.425 348.6 (Rwys 1L/19R and 12/30) | GND CON 121.9 317.8 (EAST) 121.625 348.6 (WEST) |
|-------------------------|---|---|---|



| | | |
|----------|----------|----------|
| ELEV 312 | D | TDZE 278 |
|----------|----------|----------|

| | | | | |
|-----------|-----------------------------|---|---|---|
| CATEGORY | A | B | C | D |
| S-ILS 19R | CAT II RA 103/12 100 DA 378 | | | |
| S-ILS 19R | CAT IIIa RVR 07 | | | |
| S-ILS 19R | CAT IIIb RVR 06 | | | |
| S-ILS 19R | CAT IIIc NA | | | |



CATEGORY II & III ILS - SPECIAL AIRCREW & AIRCRAFT CERTIFICATION REQUIRED

TDZ/CL Rwys 1C, 1L, 1R, 12, 19C and 19R
 REIL Rwy 30
 HIRL all Rwys

NE-3, 26 MAR 2020 to 23 APR 2020

NE-3, 26 MAR 2020 to 23 APR 2020