


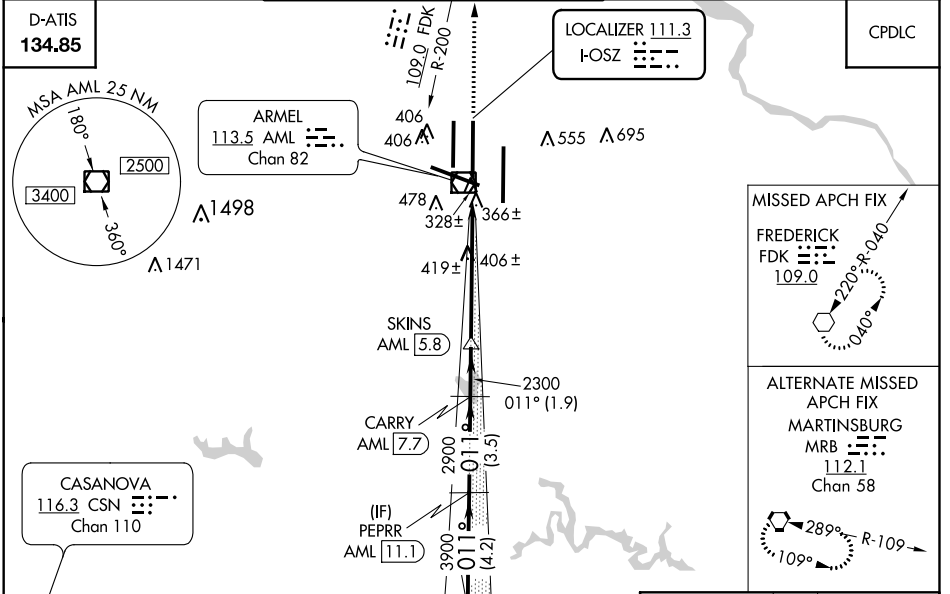
LOC I-OSZ 111.3	APP CRS 011°	Rwy ldg 11500 TDZE 286 Apt Elev 313
---------------------------	------------------------	----------------------------------------------------------------

ILS RWY 1C (SA CAT II)

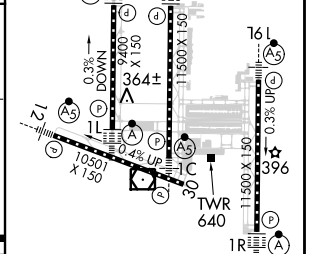
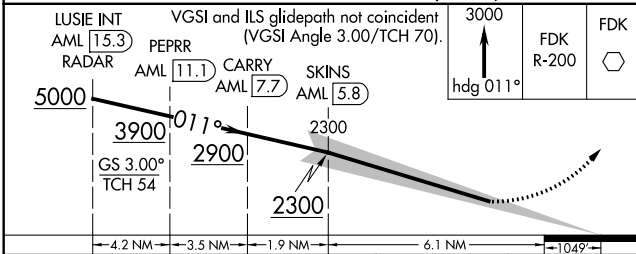
WASHINGTON DULLES INTL (IAD)

▼ DME from AML VOR/DME. Simultaneous reception of I-OSZ and AML DME required.	MALSR 	MISSED APPROACH: Climb to 3000 on heading 011° and FDK VOR R-200 to FDK VOR and hold.
▲ Simultaneous approach authorized with ILS or LOC/DME Rwy 1L, ILS Rwy 1L (Cat II), ILS Rwy 1L (Cat III), ILS or LOC Rwy 1R, ILS Rwy 1R (Cat II), ILS Rwy 1R (Cat III). Reduced lighting: Requires specific OPSPEC, MSPEC, or LOA approval and use of autoland or HUD to touchdown. DME required.		

POTOMAC APP CON 120.45 306.925 (241°-330°) 128.525 306.925 (091°-240°) 126.1 338.25 (331°-090°)	DULLES TOWER 120.1 317.8 (Rwy 1R/19L) 120.25 348.6 (Rwy 1C/19C) 134.425 348.6 (Rwys 1L/19R and 12/30)	GND CON 121.9 317.8 (EAST) 121.625 348.6 (WEST)	CLNC DEL 135.7 317.8
-------------------------------------------------------------------------------------------------------------------------------	-------------------------------------------------------------------------------------------------------------------------------------	---------------------------------------------------------------------	--------------------------------



ELEV 313	D	TDZE 286
----------	----------	----------



CATEGORY	A	B	C	D
S-ILS 1C	RA 104/12 100 DA 386			

CATEGORY II ILS - SPECIAL AIRCREW & AIRCRAFT CERTIFICATION REQUIRED

TDZ/CL Rwys 1C, 1L, 1R, 12, 19C and 19R
 REIL Rwy 30
 HIRL all Rwys

NE-3, 26 MAR 2020 to 23 APR 2020

NE-3, 26 MAR 2020 to 23 APR 2020